

PROVIDENCE, R.I.  
 CITY ENGINEER'S OFFICE  
 STREET LINE DEPT.  
 July 30, 1919

044013

PLAT OF  
**BAYARD STREET**

FROM SIXTH ST. NORTHERLY TO THE  
 NORTHERLY LINE OF OVERHILL ROAD,  
 SCALE 40 FEET PER INCH.

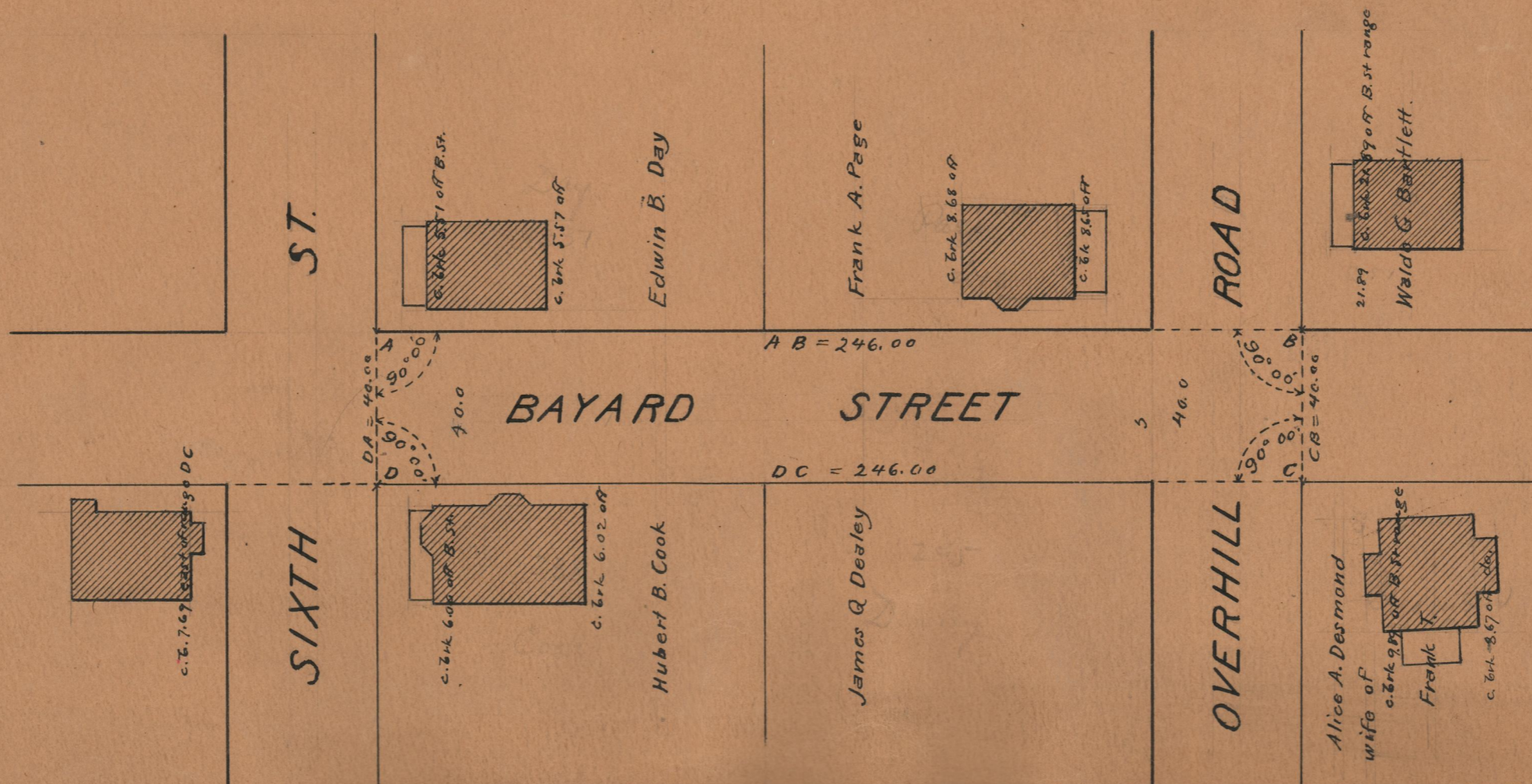
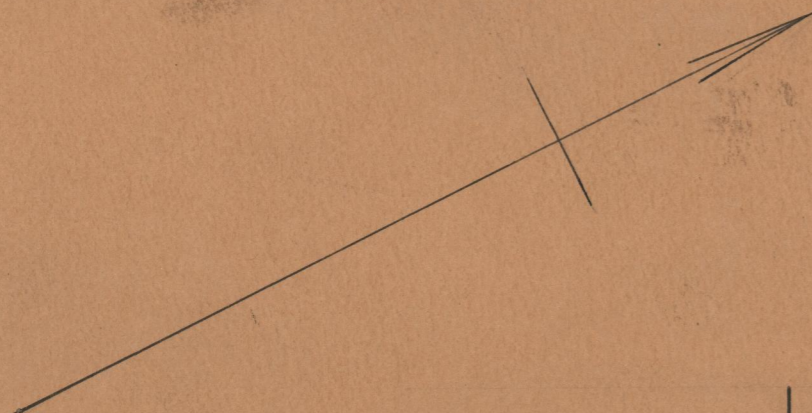
Declared a Public Highway  
 by Resolution of the  
 Board of Aldermen.

June 19, 1919.

246.00

Witness, \_\_\_\_\_  
 City Clerk.

Note, The area declared a public highway  
 is indicated by the letters A B C D.  
 The lines thus fixed conform to the  
 deeds recorded in Deed book 503, pages  
 370 and 384 and Deed book 528, page  
 447, in the office of the Recorder of Deeds.



OFFICE No. 21603  
 DRAWER 74  
 SHEET B-34