

FB XXXVII - 4096

PROVIDENCE, R.I.  
CITY ENGINEER'S OFFICE  
STREET LINE DEPT.

July 30, 1919

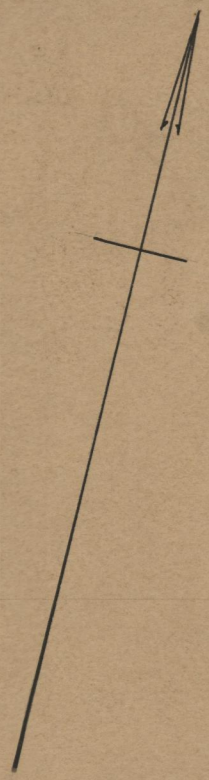
044014

09628

See 2590 P

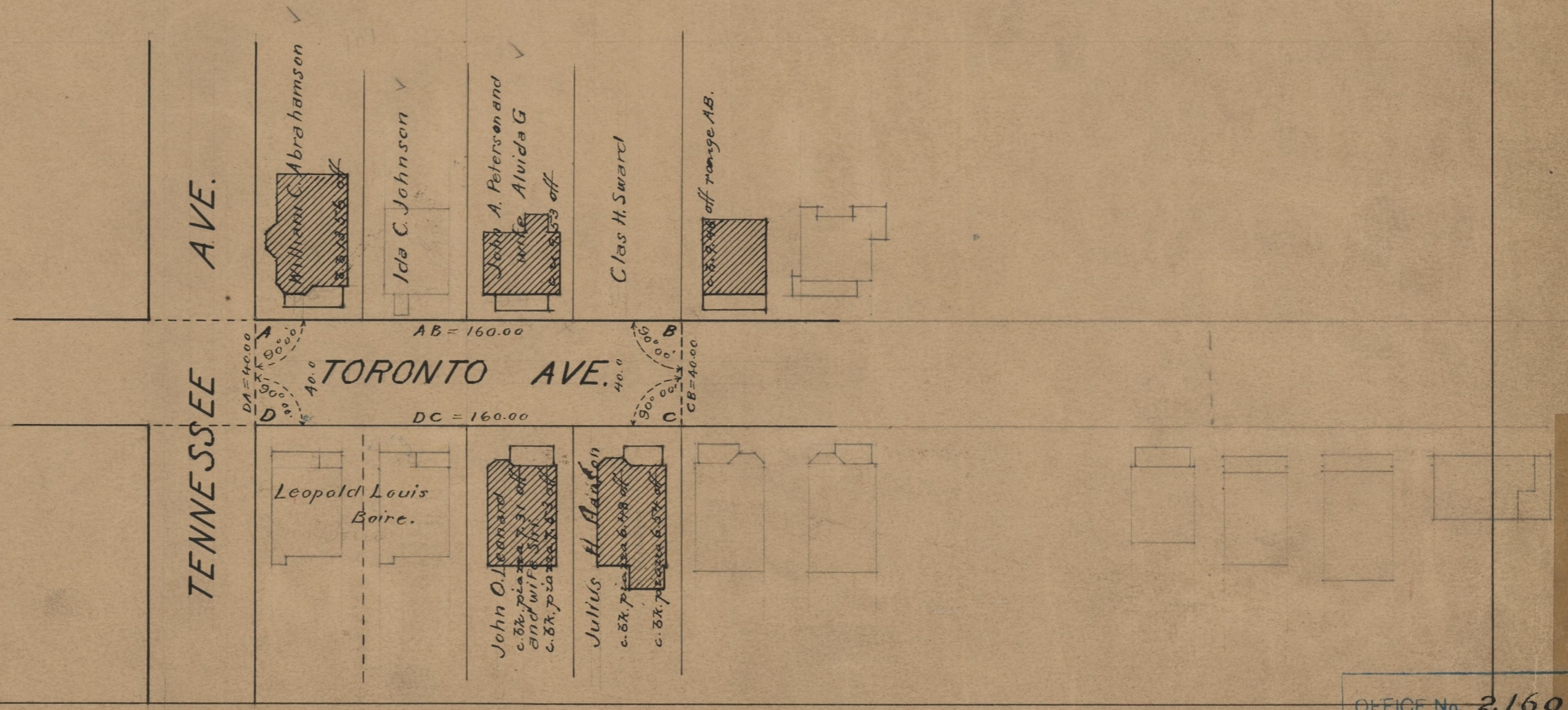
Witness, \_\_\_\_\_  
City Clerk

Note, The area declared a public highway  
is indicated by the letters ABCD.  
The lines thus fixed conform to the deed  
recorded in Deed book 487, page 317, in the  
office of the Recorder of Deeds.



PLAT OF  
**TORONTO AVENUE**  
FROM TENNESSEE AVE. 160 FT. EASTERLY  
SCALE 50 FEET PER INCH.

Declared a Public Highway  
by Resolution of the  
Board of Aldermen  
June 19, 1919.



OFFICE No. 21602  
DRAWER " 74  
SHEET " B-33