

Note, The area dedicated and declared a public highway is indicated by the letters ABCDE.

PROVIDENCE, R.I.
CITY ENGINEER'S OFFICE
STREET LINE DEPT.

Mar. 1, 1927

049363

PLAT OF KINSLEY AVENUE

FROM GASPEE ST. TO FRANCIS ST.

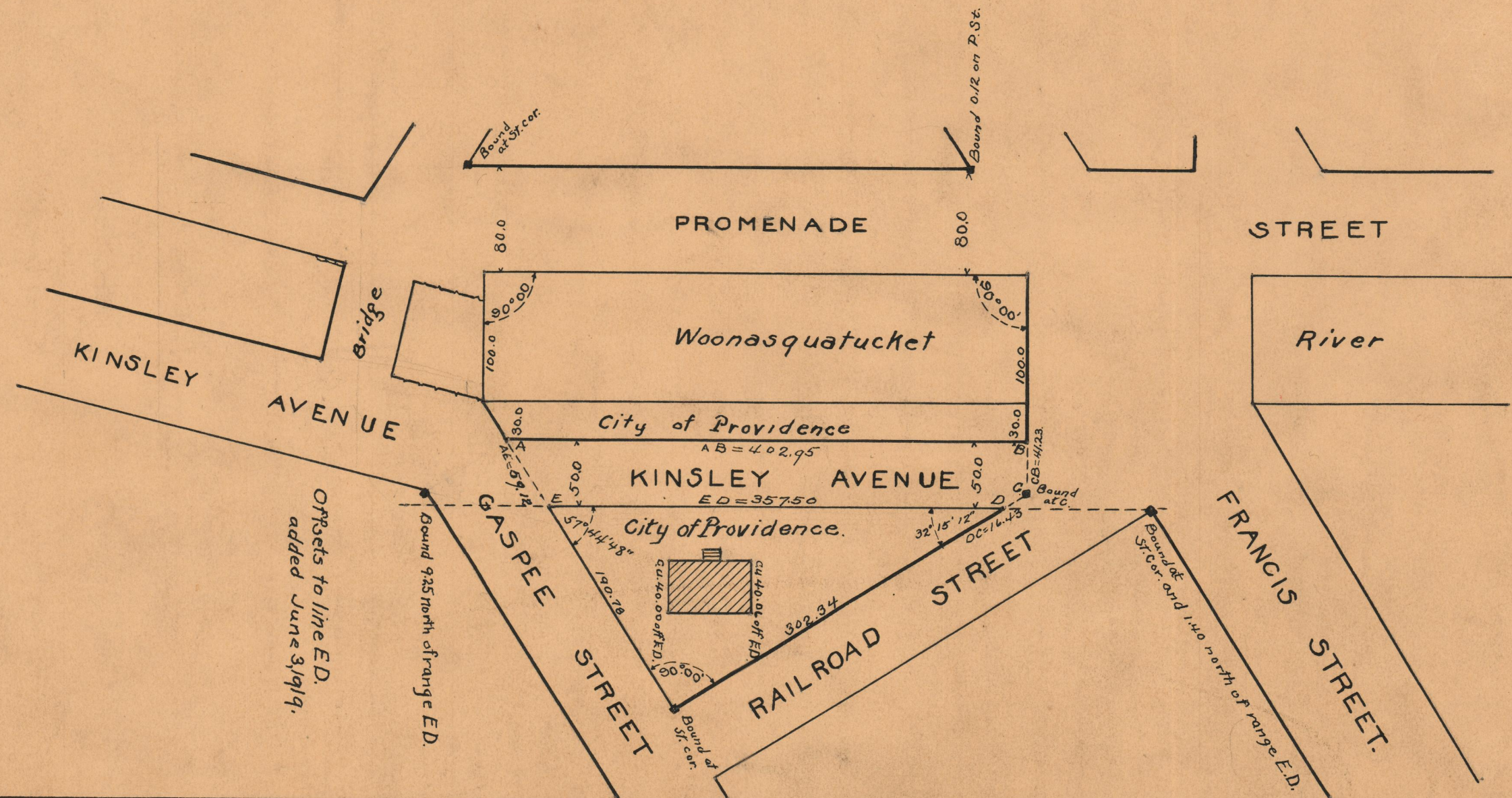
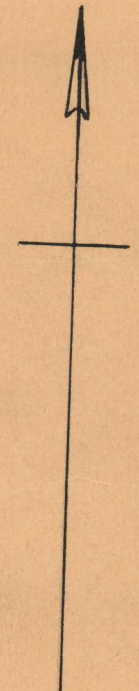
SCALE 100 FEET PER INCH.

DECLARED A PUBLIC HIGHWAY

BY RESOLUTION OF THE

CITY COUNCIL.

Witness _____
City Clerk.



OFFICE No. 21524
DRAWER 74
SHEET B-30