

PROVIDENCE, R.I.
CITY ENGINEER'S OFFICE
STREET LINE DEPT.

Oct. 29, 1918

043579

PLAT OF EXTENSION OF MCDONOUGH STREET FROM HULDAH ST. TO WHITEHALL ST., INCLUSIVE.

Note, Parcels ALKOIJA, CDEFGHC and BNMB as indicated herein have been conveyed to the City of Providence for public highway purposes by deeds duly acknowledged and recorded.
Parcel KLMNOK is to be laid out as a public highway under another form.
Parcel BCHIB was laid out by the Town of Johnston Aug 14, 1890 as a part of North Allen (now Judith) street.

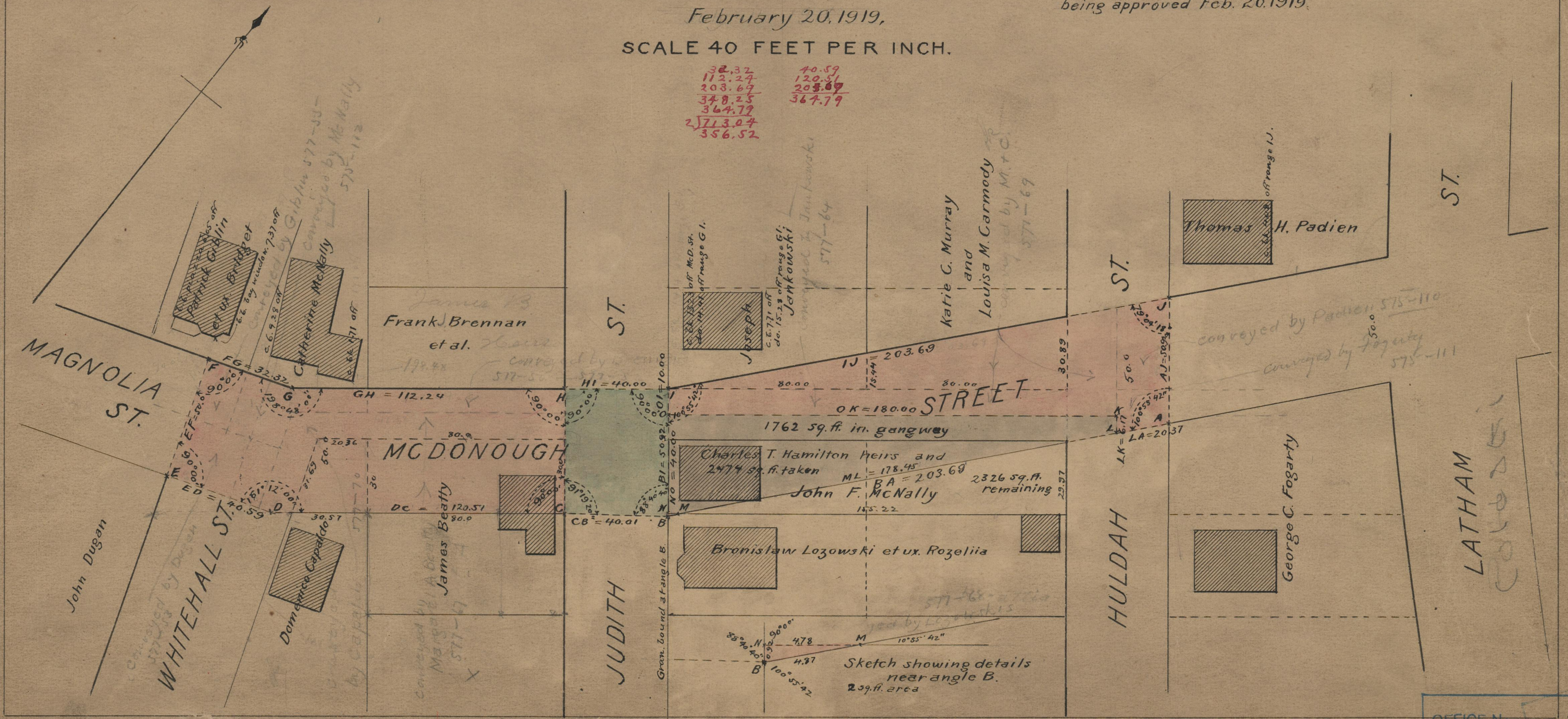
Declared a Public Highway
by Resolution of the
Board of Aldermen,
February 20, 1919,
SCALE 40 FEET PER INCH.

Changed to Magnolia Street,
April 3, 1919.

Parcel KLMNOK was laid out by a committee in the usual form, the report being approved Feb. 20, 1919.

32.32
112.24
203.69
378.25
364.79
2713.04
356.52

40.59
120.51
203.69
364.79



OFFICE No. 21330
DRAWER 74
SHEET B-29