

PROVIDENCE, R.I.  
CITY ENGINEER'S OFFICE  
STREET LINE DEPT.

Feb. 7, 1927

049316

Note, The area declared a public highway is indicated by the letters A.B.C.D.

The lines thus fixed conform to the deeds, recorded in deed book 520, pages 273 & 275 Deed book 561 pages 457, 461, 463 and 482. Deed book 565 pages 96, 159, and 166 and Deed book 569 pages 112, and agree with the map upon which this portion of Rutherglen Avenue was originally platted, a copy of which may be found on plat card #656, in the office of the Recorder of Deeds.

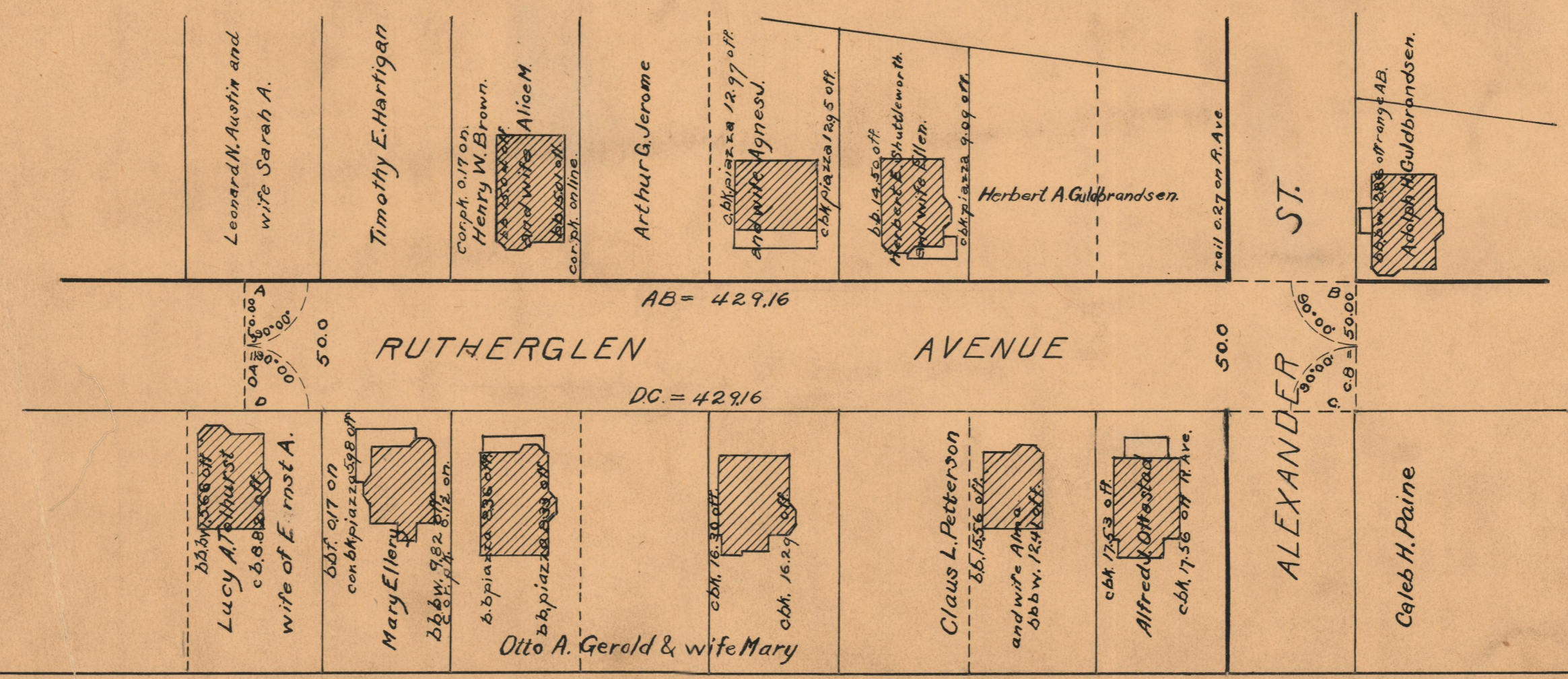
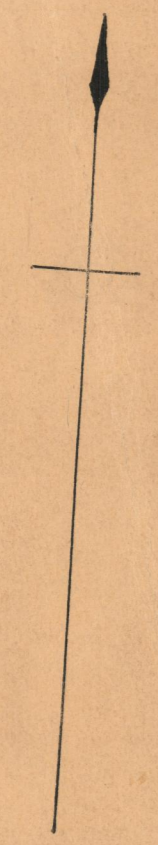
PLAT OF

# RUTHERGLEN AVENUE

FROM THE SUMMIT NEAR PARKMAN ST.  
TO THE EAST LINE OF ALEXANDER ST.

SCALE 50 FEET PER INCH

ESTABLISHED & DECLARED A PUBLIC HIGHWAY  
BY RESOLUTION OF THE  
BOARD OF ALDERMEN.  
April 18, 1918.



74  
B-26

OFFICE No.	21231
DRAWER	74
SHEET	A 36