

March 30, 1918

043315

# PLAT OF HASSAN STREET

FROM SOUTHERLY LINE OF NAHANT ST.  
TO CENTER LINE OF SOCIAL ST.  
SCALE 50 FEET PER INCH.

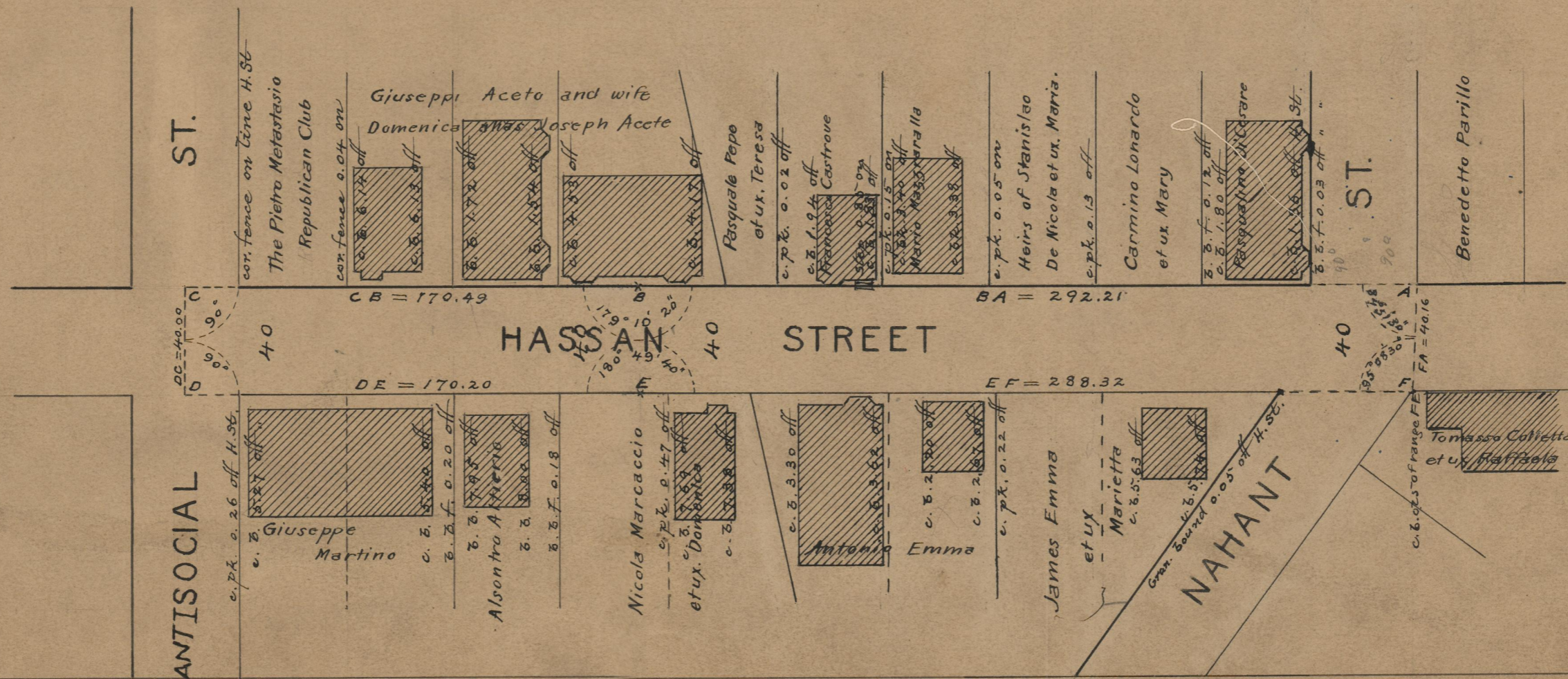
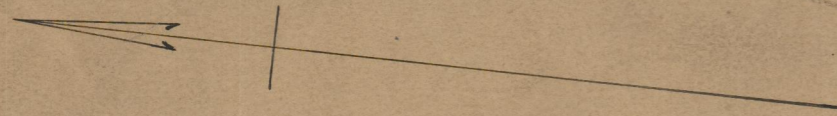
Established as a Public Highway  
by Resolution of the  
Board of Aldermen  
April 18, 1918.

170.49 170.20  
298.21 288.32  
468.70 458.52  
458.52  
21921.22  
460.61  
- 40.00 Should have come out of 74<sup>B</sup> 14 for Greeley St.  
420.61

Witness, \_\_\_\_\_  
City Clerk

Note, The area declared a public highway  
is indicated by the letters ABCDEF.

The lines thus defined substantially  
agree with the maps upon which Hassan  
street was originally platted, copies of which  
may be found on plat cards \*373 and \*357 in  
the office of the Recorder of Deeds.



OFFICE No. 21230  
DRAWER " 74  
SHEET " B-25