

043311

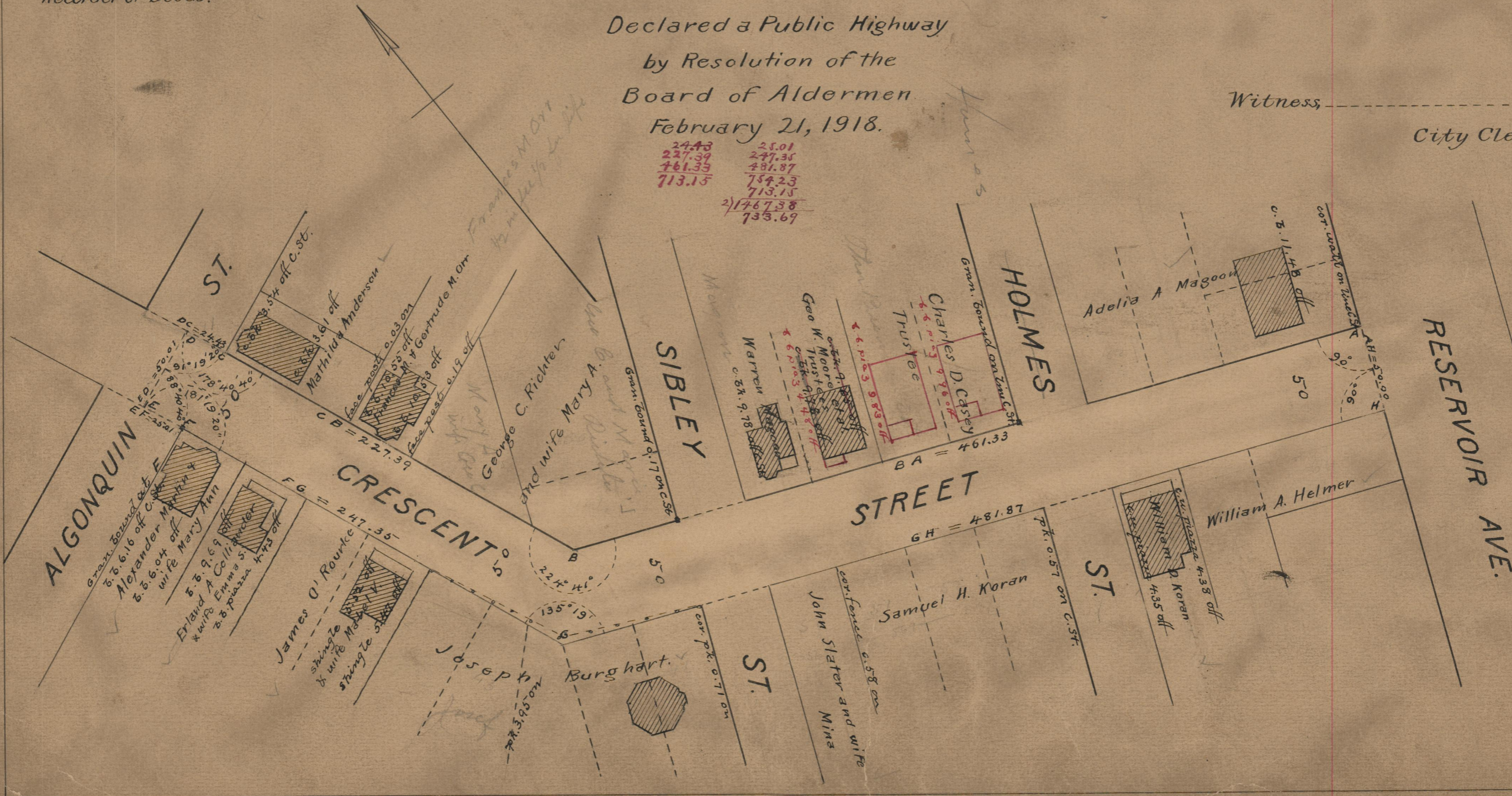
PLAT OF CRESCENT STREET

FROM RESERVOIR AVE.
 TO THE CENTER LINE OF ALGONQUIN ST.
 SCALE 60 FEET PER INCH.

Declared a Public Highway
 by Resolution of the
 Board of Aldermen
 February 21, 1918.

Witness _____
 City Clerk

24.43
 227.34
 761.33
 713.15
 25.01
 247.35
 481.87
 759.23
 713.15
 2)1767.38
 733.69



Note, The area declared a public highway is indicated by the letters ABCDEFGH.

The lines thus fixed conform to the deeds recorded in Deed book 561, page 48, Deed book 562, pages 278, 290, 299, and 302, Deed book 565, pages 88 and 95, and Deed book 569, pages 394, 397, 402, 421, 431 and 434, all in the office of the Recorder of Deeds.

OFFICE No. 21228
 DRAWER 74
 SHEET B-23

74
 B-23

B 23