

PROVIDENCE, R.I.
CITY ENGINEER'S OFFICE
STREET LINE DEPT.
Oct. 9, 1917

042927

PLAT OF WHITFORD AVENUE

FROM RIVER AVE. TO SMITH ST.
SCALE 60 FEET PER INCH.

Declared a Public Highway
by Resolution of the
Board of Aldermen
October 4, 1917.

500.83	479.18
9.72	51.76
510.55	80.45
611.39	611.39
1121.94	210.76
560.97	5.38
558.59	

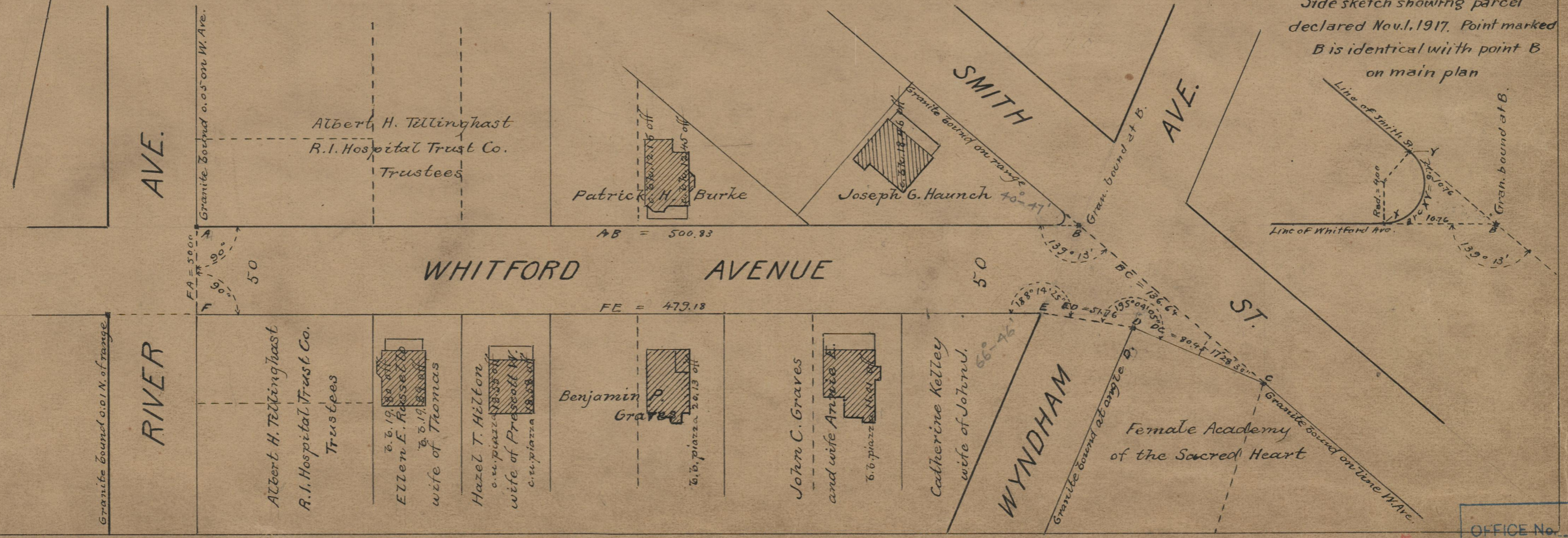
Note, The area declared a public highway is indicated by the letters A B C D E F
The lines thus fixed conform to the deeds recorded in Deed book 541, pages 258 and 342, also 569-335, in the office of the Recorder of Deeds.

The area thus declared on Nov. 1, 1917 is shown by the side sketch by the letters B X Y. See deed recorded in Deed book 569, page 395.

Showing also
A certain Parcel of Land at th south westerly corner of Smith St. and Whitford Ave.
Declared a Public Highway by the Board of Aldermen
November 1, 1917.

Witness, _____
City Clerk.

Side sketch showing parcel declared Nov. 1, 1917. Point marked B is identical with point B on main plan



OFFICE No.	20572
DRAWER	74
SHEET	B-19

74
B-19