

PLAT OF
TENNESSEE AVENUE

FROM CHAPMAN ST. TO NEW YORK AVE.

SCALE 60 FEET PER INCH.

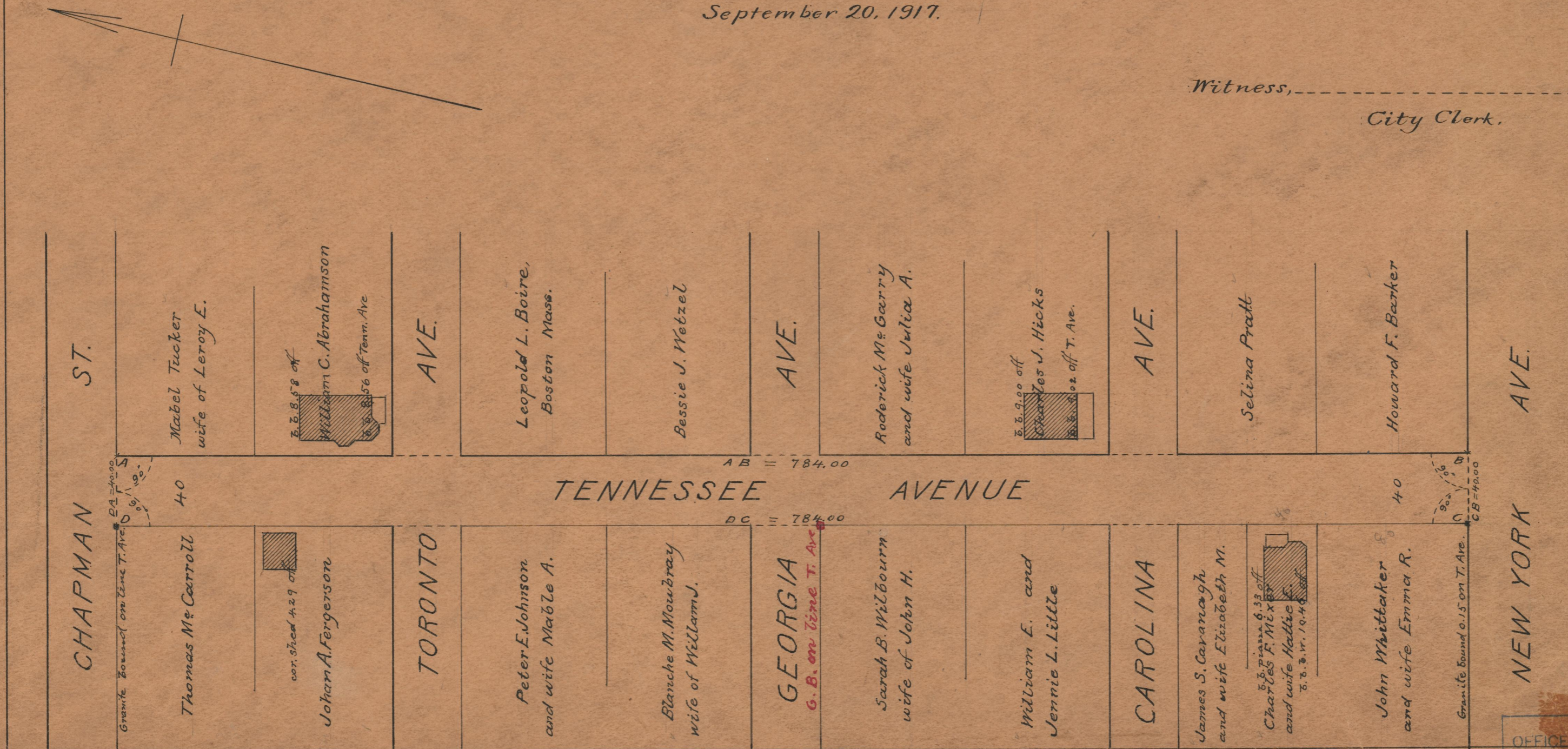
Declared a Public Highway
 by Resolution of the
 Board of Aldermen
 September 20, 1917.

PROVIDENCE, R.I.
 CITY ENGINEER'S OFFICE
 STREET LINE DEPT.
 Oct. 9, 1917

042921

Note, The area declared a public highway
 is indicated by the letters ABCD.
 The lines thus fixed conform to the deed
 recorded in Deed book 487, page 317, in the
 office of the Recorder of Deeds

Witness, _____
 City Clerk.



OFFICE No. 2056
 DRAWER " 74
 SHEET " B-16

74
 B-16