

PROVIDENCE, R.I.
CITY ENGINEER'S OFFICE
STREET LINE DEPT.

Oct. 9, 1917

042919

PLAT OF

TORONTO AVENUE

FROM TENNESSEE AVE. TO ALLENS AVE.

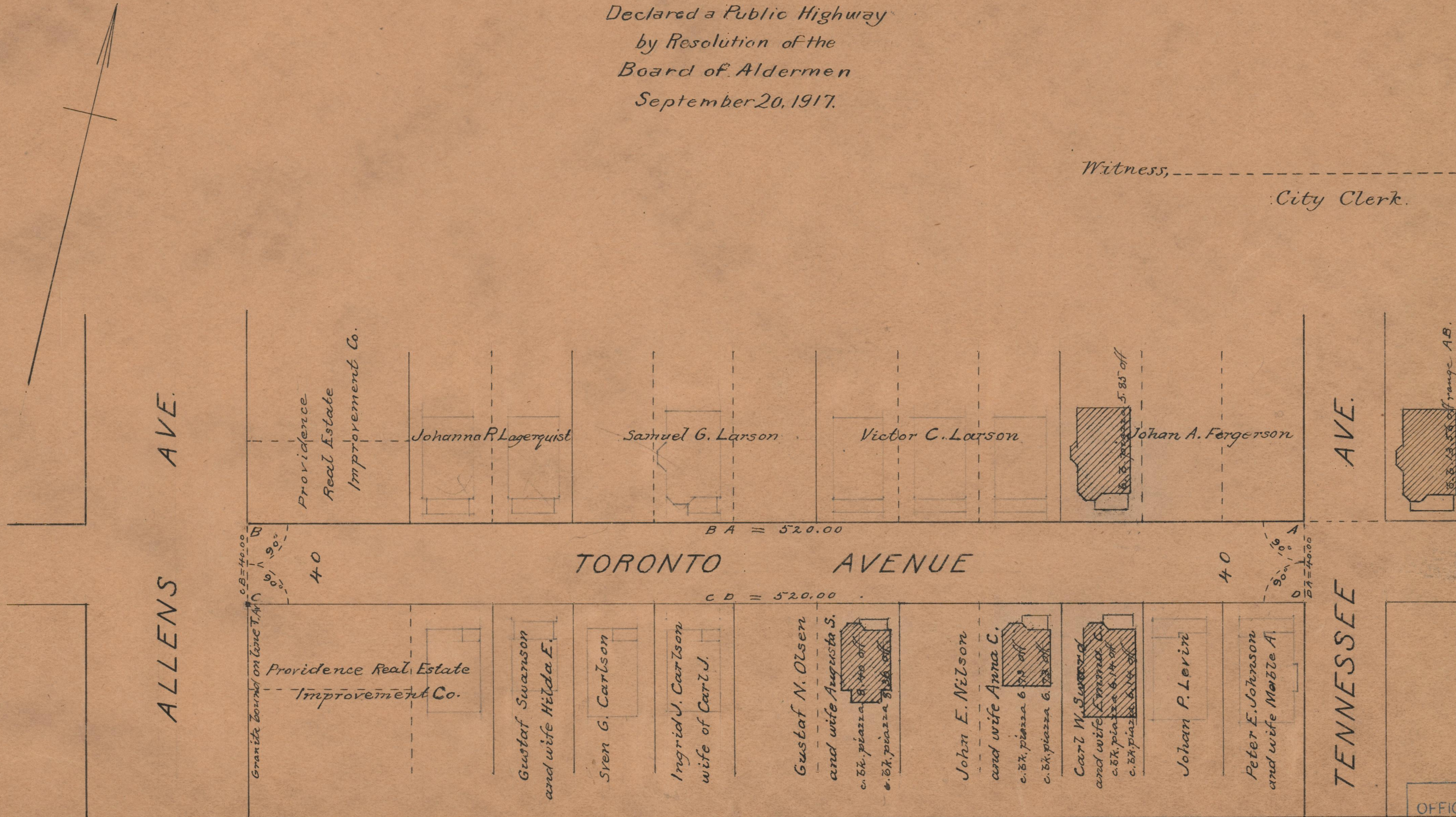
SCALE 50 FEET PER INCH

Declared a Public Highway
by Resolution of the
Board of Aldermen
September 20, 1917.

Witness, _____
City Clerk.

Note, The area declared a public highway
is indicated by the letters ABCD.

The lines thus fixed conform to the deed
recorded in Deed book 487, page 317, in the
office of the Recorder of Deeds.



OFFICE No. 20568
DRAWER " 74
SHEET " B-15

74
B-15