

Oct. 9, 1917

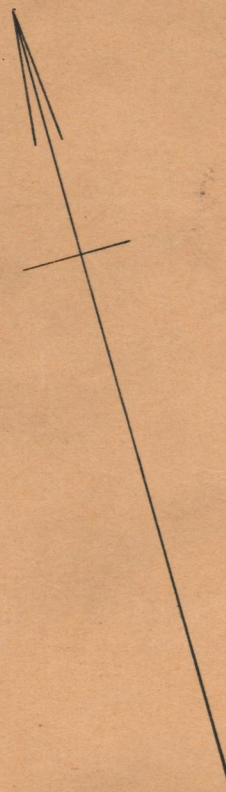
042915

# PLAT OF THURSTON STREET

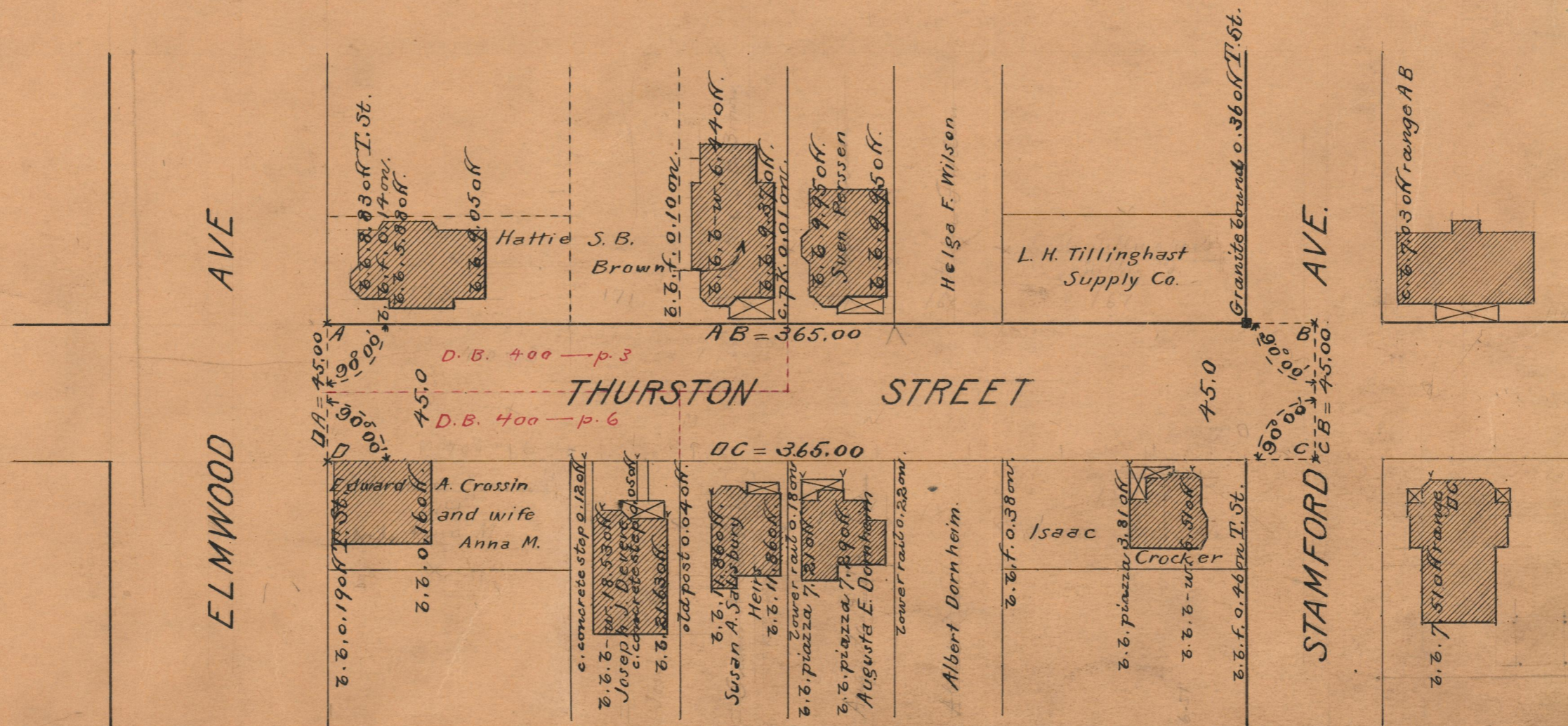
FROM ELMWOOD AVE. TO  
 CENTER LINE OF STAMFORD AVE.  
 SCALE 50 FEET PER INCH.

Established as a Public Highway  
 by Resolution of the  
 Board of Aldermen.

Note, The area declared a public highway  
 is indicated by the letters A B C D.  
 The lines thus fixed conform to the deeds  
 recorded in Deed Book 400, on pages 3  
 and 6, in the office of the Recorder of  
 Deeds.



Witness, \_\_\_\_\_  
 City Clerk.



OFFICE No.	20566
DRAWER	74
SHEET	B-13