

# PLAT OF EDDY STREET

FROM ERNEST ST. TO NEW YORK AVE

IN TWO SHEETS

SCALE 80 FEET PER INCH.

Widened on easterly side  
by Resolution of the  
Board of Aldermen  
June 7, 1917.

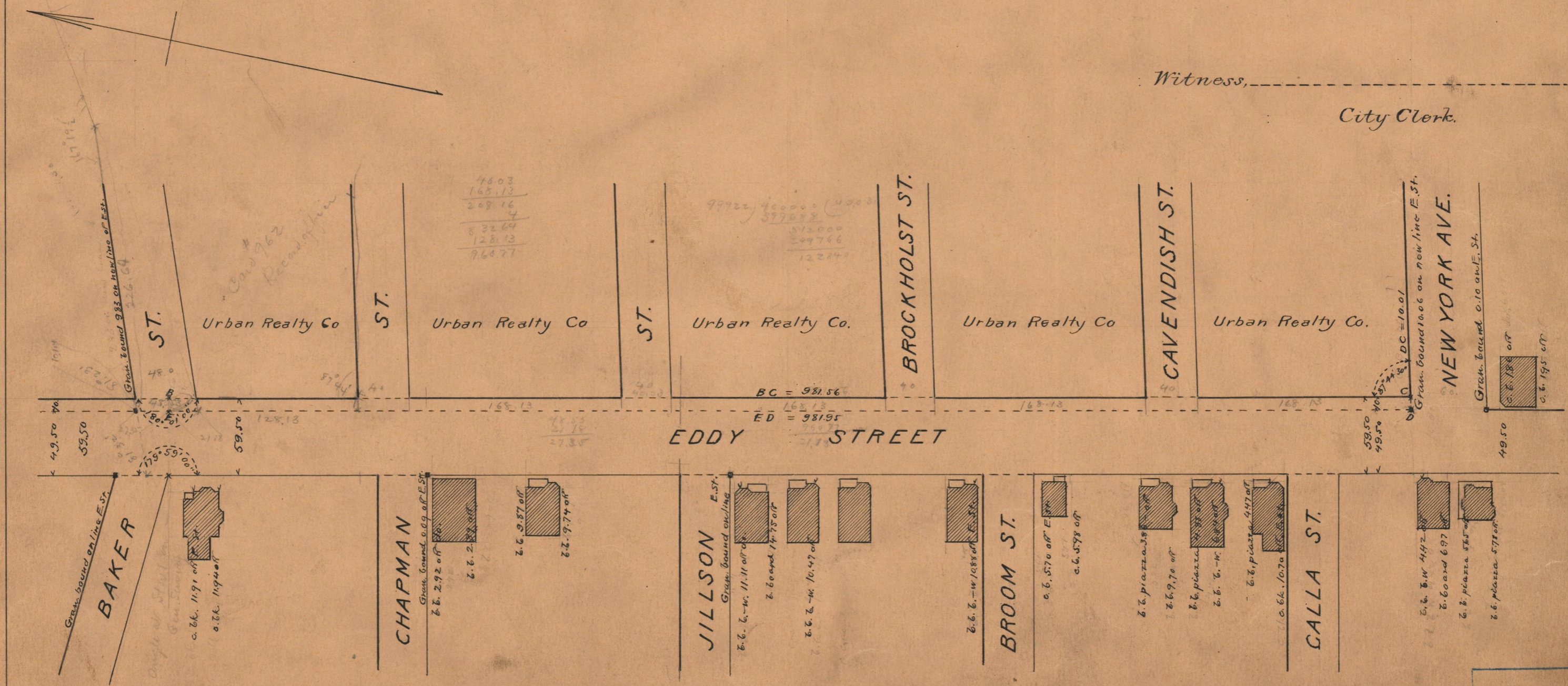
PROVIDENCE, R.I.  
CITY ENGINEER'S OFFICE  
STREET LINE DEPT.

July 9, 1917

042785

Note, The extent and location of the "strip of land ten feet wide added to the easterly side of Eddy St. is indicated by the letters A B C D E F.  
The lines thus defined conform to the deeds recorded in Deed book 569, pages 78, 80, 81, 83, 85 and 86, in the office of the Recorder of Deeds.

Witness, \_\_\_\_\_  
City Clerk.



OFFICE No.	205-07
DRAWER	74
SHEET	B-10