

PROVIDENCE, R.I.  
 CITY ENGINEER'S OFFICE  
 STREET LINE DEPT.  
 June 25, 1917  
 042762

PLAT OF  
**DOYLE AND UPTON AVENUES**

FROM LOT 160 ON THE JOHN R. FREEMAN PLAT NO. 1, SO CALLED,  
 TO WAYLAND AVE. SHOWING CHANGES IN LOCATION

IN TWO SHEETS  
 SCALE 50 FEET PER INCH

Certain strips of land on the northerly lines of  
 Doyle and Upton Avenues were ordered repaired  
 and certain portions of said avenues along the  
 southerly sides thereof were declared useless  
 and abandoned by the

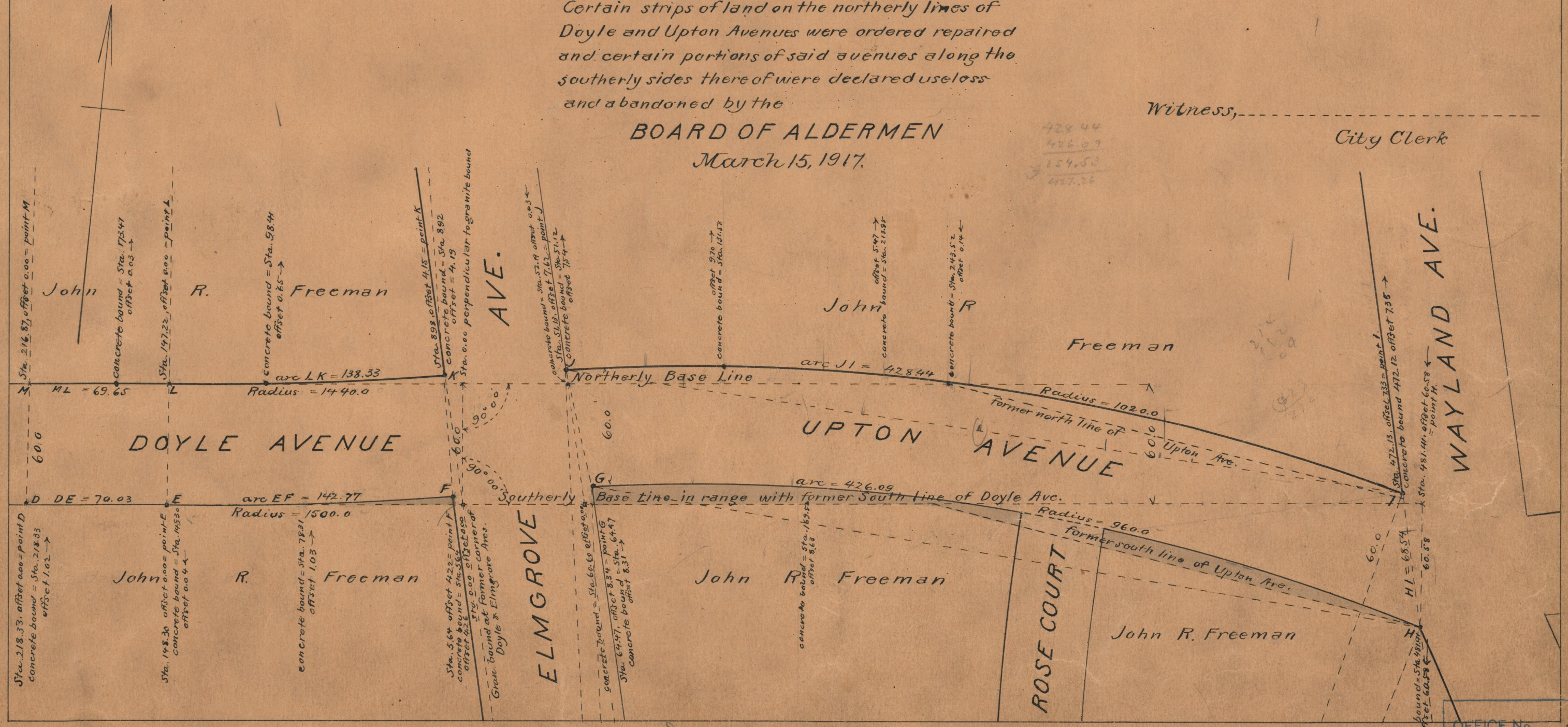
BOARD OF ALDERMEN  
 March 15, 1917.

Witness, \_\_\_\_\_  
 City Clerk

428.44  
 426.07  
 854.51  
 427.36

Note, The terminal points of the curved  
 and straight lines which make up the new  
 boundaries of Doyle and Upton avenues  
 are defined hereon by stations and offsets  
 on the two base lines indicated, the offsets  
 being measured at right angles with the  
 base lines

The boundaries thus fixed are intended  
 to agree with the "John B. Freeman Plat No. 1."  
 The portions of the two streets declared  
 useless are indicated by the neutral tint.



OFFICE No. 20503  
 DRAWER, 74  
 SHEET, B-6