

PROVIDENCE, R.I.
 CITY ENGINEER'S OFFICE
 STREET LINE DEPT.
 June 25, 1917

042761

PLAT OF
DOYLE AND UPTON AVENUES

FROM LOT 160 ON THE JOHN R. FREEMAN PLAT NO. 1, SO CALLED,
 TO WAYLAND AVE. SHOWING CHANGES IN LOCATION

IN TWO SHEETS

SCALE 50 FEET PER INCH.

Certain strips of land along the northerly lines of
 Doyle and Upton Avenues were ordered repaired
 and certain portions of said avenues along the
 southerly lines thereof were declared useless and
 abandoned by Resolutions of the

BOARD OF ALDERMEN,
 March 15, 1917.

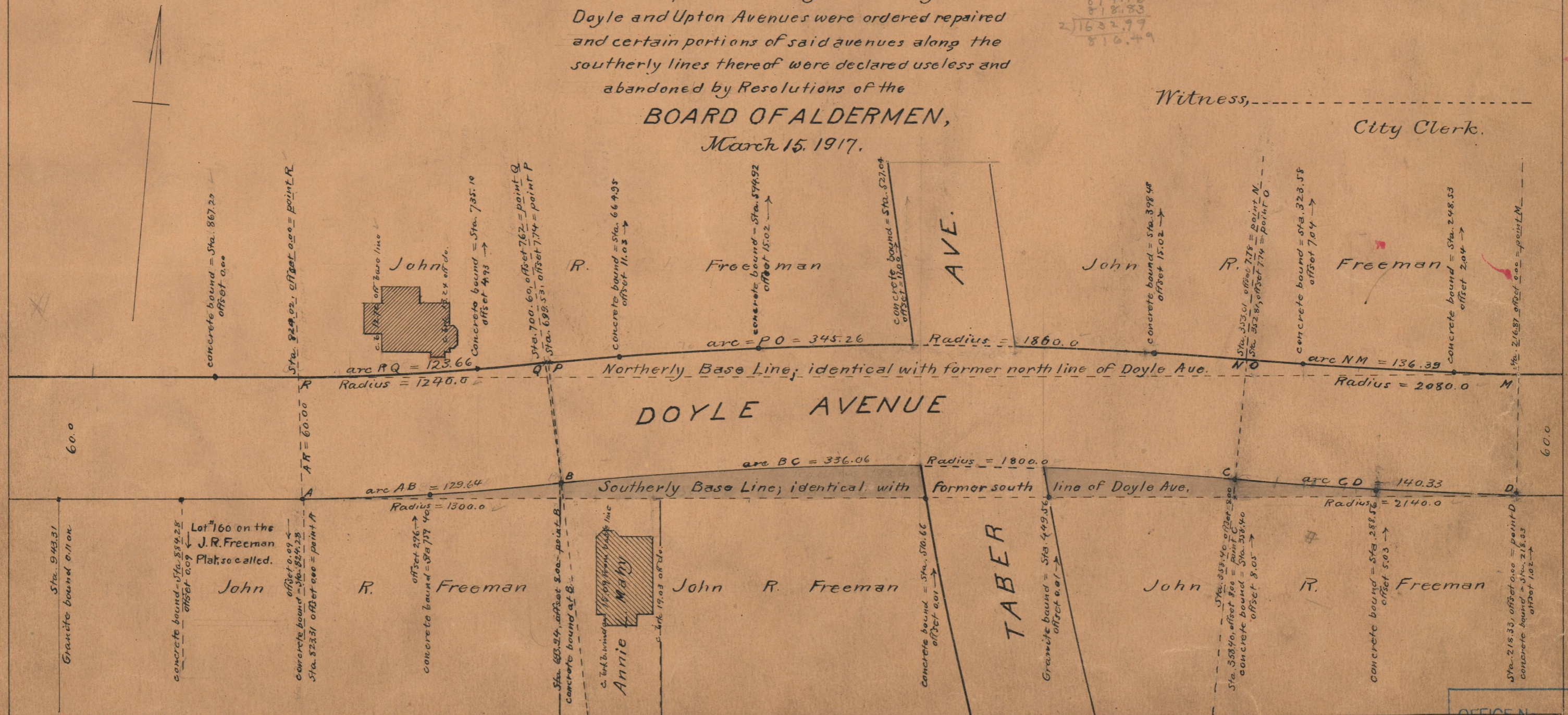
Witness, _____
 City Clerk.

123.66	1.28
347.20	1.28
186.10	1.28
66.10	1.28
138.20	1.28
814.10	1.28
818.10	1.28
2) 1632.99	
816.49	

Note, The terminal points of the curved
 and straight lines which make up the new
 boundaries of Doyle and Upton aves, are
 defined herein by stations and offsets
 on the two base lines indicated, the offsets
 being measured at right angles with the base
 lines.

The boundaries thus fixed are intended
 to agree with the "John R. Freeman Plat No. 1."

The portions of the two streets declared
 useless are indicated by the neutral tint.



OFFICE No. 20502
 DRAWER 74
 SHEET B-5