

Dec. 5. 1916

042383-4

PLAT OF

LAWRENCE STREET

FROM PLAINFIELD ST. TO BEND ST.

SCALE 50 FEET PER INCH.

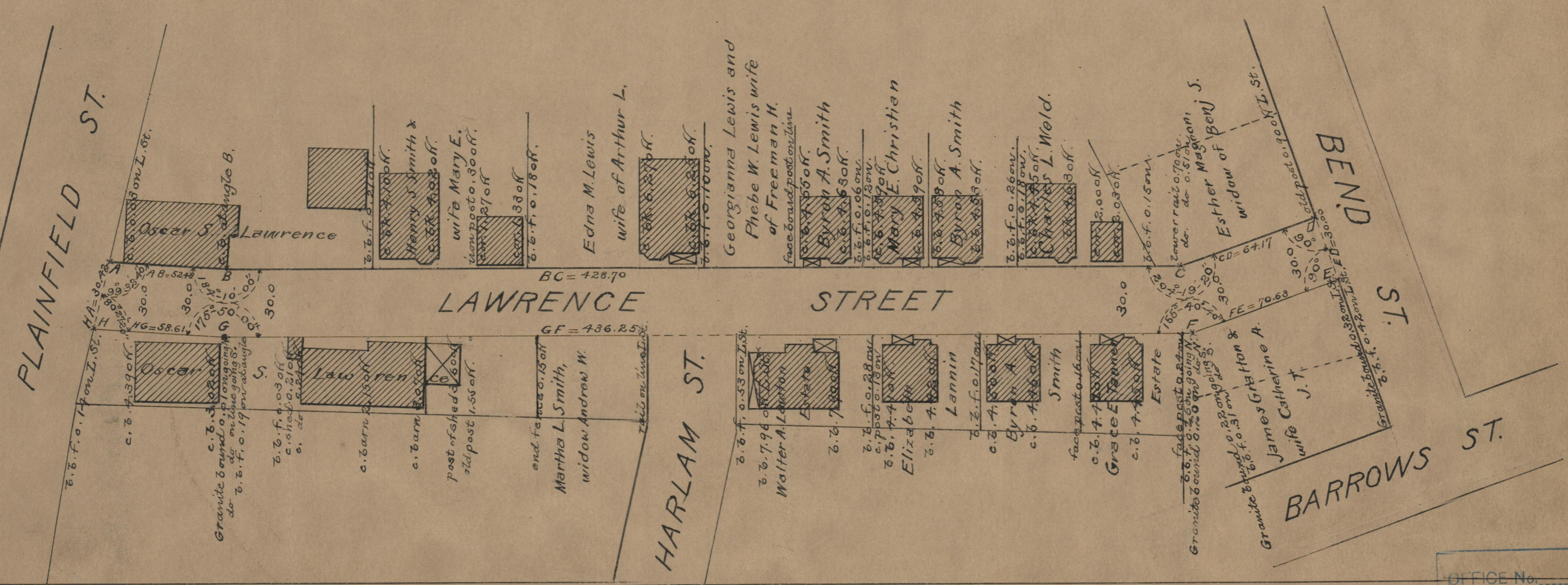
52.48 58.61
428.70 436.25
64.17 70.63
575.35 565.79
565.79
2)1110.87
555.42

ESTABLISHED A PUBLIC HIGHWAY
BY RESOLUTION OF THE
BOARD OF ALDERMEN

June 21, 1917.

Witness, _____
City Clerk.

Note: The area established as a public highway is indicated by the letters ABCDEFGH.
The lines thus fixed conform to the deed recorded in Deed book 565, page 166, in the Recorder's office and to the "Map of Land belonging to Leonard Lawrence" which may be found on card 769 in the same office.



74
A-100

OFFICE No. 19896
DRAWER " 74
A-100