

042377+8

PLAT OF
BAYARD STREET

FROM OVERHILL ROAD NORTHERLY TO

THE CURVE THEREIN.

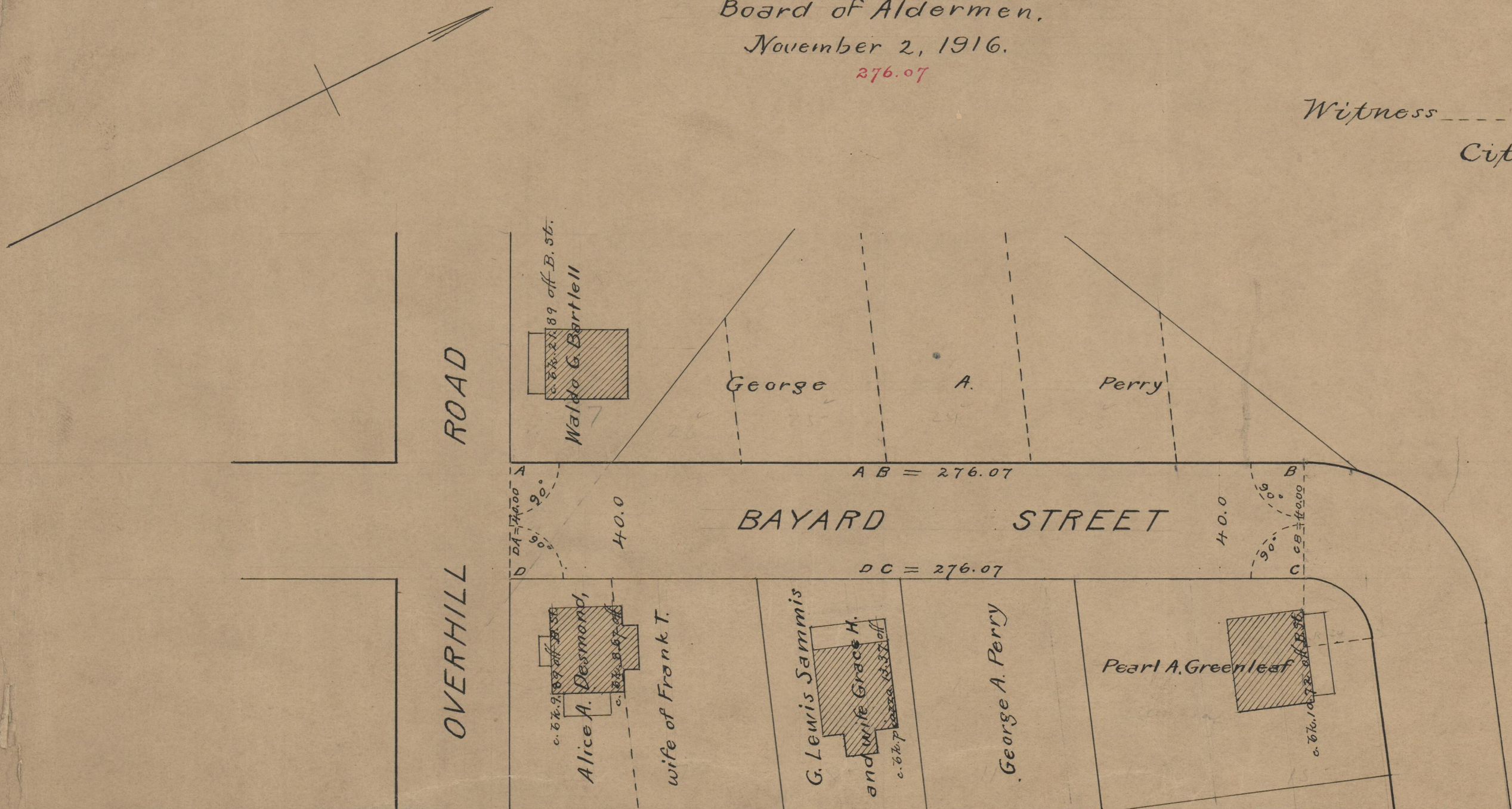
SCALE 40 FEET PER INCH.

Declared a Public Highway
 by Resolution of the
 Board of Aldermen,
 November 2, 1916.

276.07

Witness _____
 City Clerk.

Note. The area declared a public highway
 is indicated by the letters A B C D.
 The lines thus fixed conform to the deeds
 recorded in Deed book 528, pages 429 and 447
 in the office of the Recorder of Deeds.



OFFICE No.	19893
DRAWER "	74
SHEET "	A-97