

PROVIDENCE, R.I.  
CITY ENGINEER'S OFFICE  
STREET LINE DEPT.

Dec. 5, 1916

042370

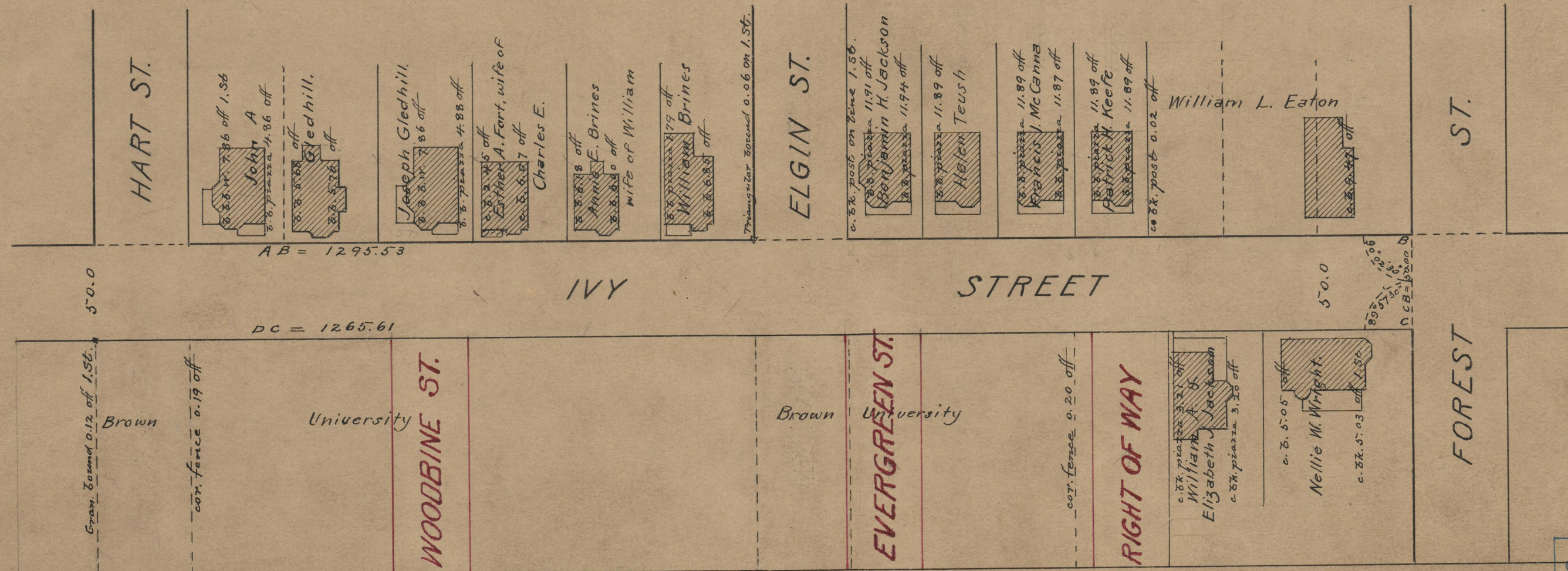
PLAT OF  
**IVY STREET**  
FROM ROCHAMBEAU AVE. TO FOREST ST.  
IN TWO SHEETS  
SCALE 60 FEET PER INCH.

Note, The area declared a public highway is indicated by the letters A B C D.

The lines thus fixed conform to the deeds recorded in Deed book 470, pages 486-7, Deed book 506, page 221, Deed book 507, page 89, Deed book 541, page 305 & 310, Deed Book 543, page 98, Deed book 546, pages 377 & 416, Deed book 548, page 139, and Deed book 552, page 401, in the office of the Recorder of Deeds.

Declared a Public Highway  
by Resolution of the  
Board of Aldermen,  
September 21, 1916,

Witness, \_\_\_\_\_  
City Clerk.



OFFICE No. 19890  
DRAWER " 74  
SHEET " A-94

19  
94