

PROVIDENCE, R.I.
CITY ENGINEER'S OFFICE
STREET LINE DEPT.
Dec. 5, 1916

042369

PLAT OF IVY STREET

FROM ROCHAMBEAU AVE. TO FOREST ST.

IN TWO SHEETS

SCALE 60 FEET PER INCH.

Declared a Public Highway
by Resolution of the
Board of Aldermen.

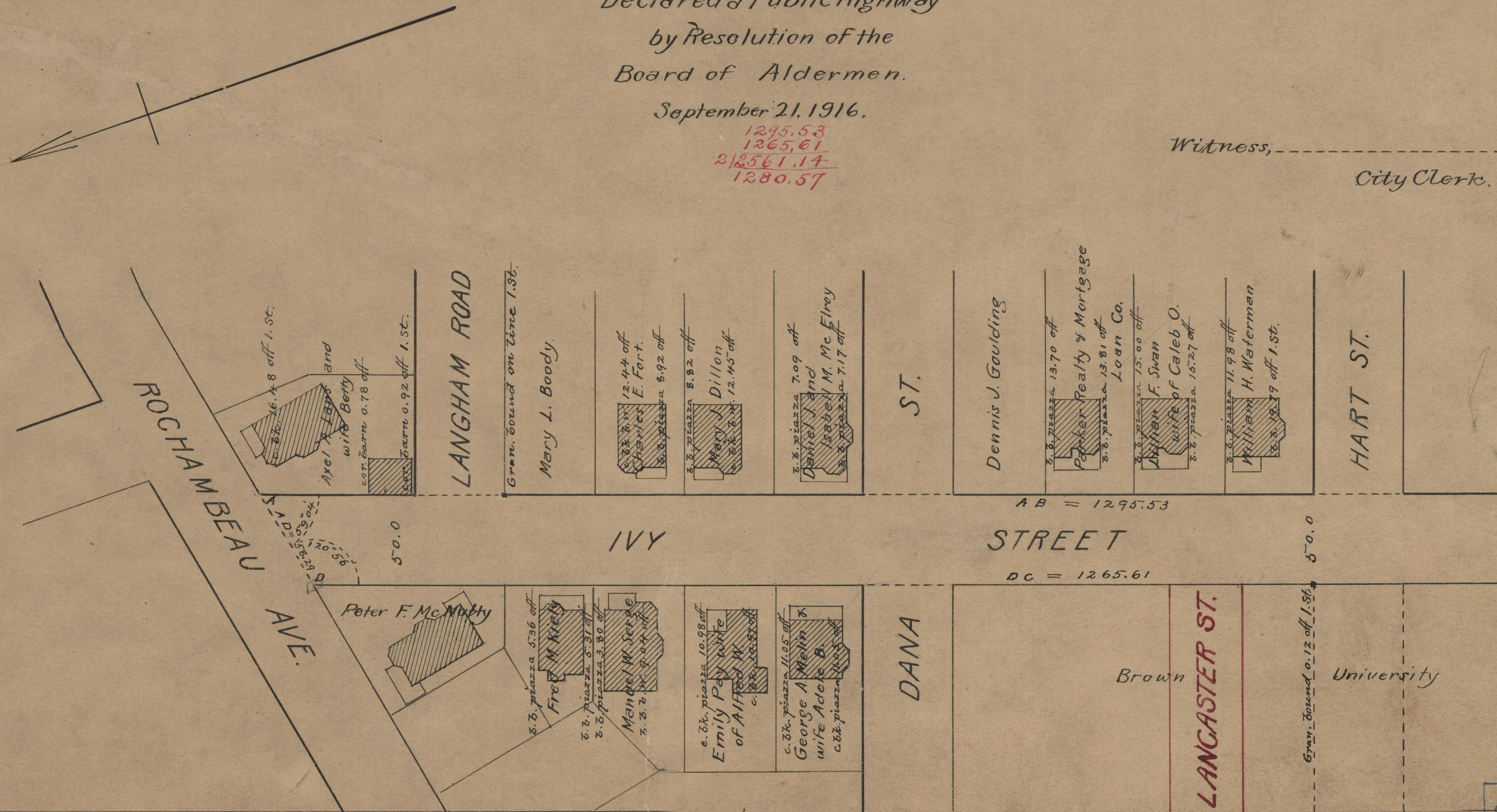
September 21, 1916.

1295.53
1265.61
212561.14
1280.57

Witness;

City Clerk.

Note, The area declared a public highway
is indicated by the letters A B C D.
The lines thus fixed conform to the deeds
recorded in Deed book 470, pages 486-7, Deed
book 506, page 221, Deed book 507, page 89,
Deed book 541, pages 305 & 310, Deed book 543,
page 98, Deed book 546, pages 377 & 416, Deed
book 548, page 139, and Deed book 552, page 401,
in the office of the Recorder of Deeds.



A/93

OFFICE No. 19889
DRAWER " 74