

PROVIDENCE, R.I.
CITY ENGINEER'S OFFICE
STREET LINE DEPT.

Nov. 2, 1916

042298

PLAT OF MOOREFIELD STREET

FROM POCASSET AVE. TO ETHAN ST.

SCALE 50 FEET PER INCH

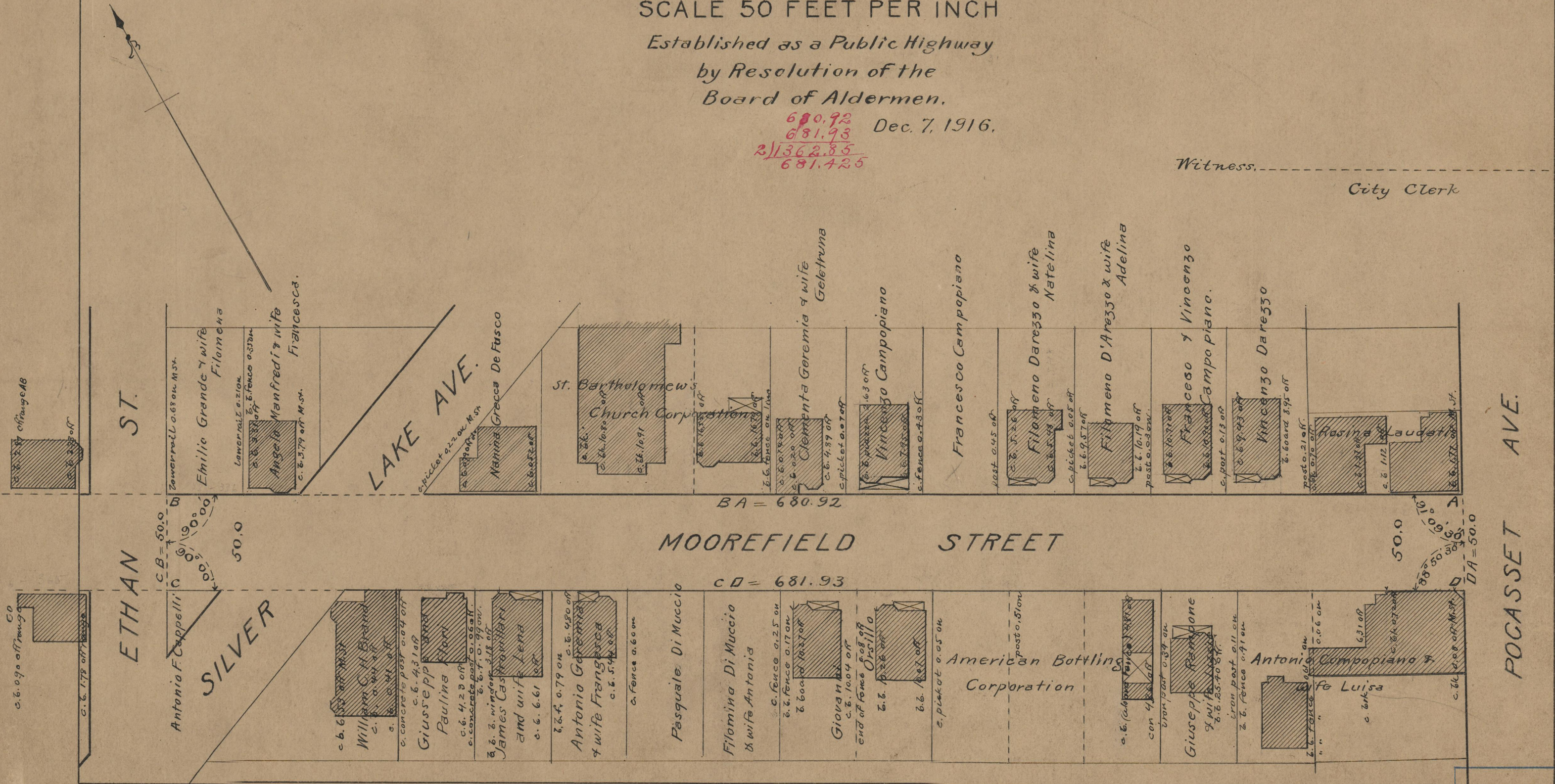
Established as a Public Highway
by Resolution of the
Board of Aldermen.

680.92
681.93
2) 1362.85
681.425
Dec. 7, 1916.

Witness, _____
City Clerk

Note. The area declared a public highway is indicated by the letters ABCD.

The lines thus fixed conform to the deeds recorded in Deed book 528, page 292, and Deed book 552, page 336, in the office of the Recorder of Deeds.



BA = 680.92

MOOREFIELD STREET

CD = 681.93

ETHAN ST.
LAKE AVE.
POCASSET AVE.

74
A-92

OFFICE No. 19888
DRAWER " 74
SHEET " A-92