

July 5, 1916.

042037

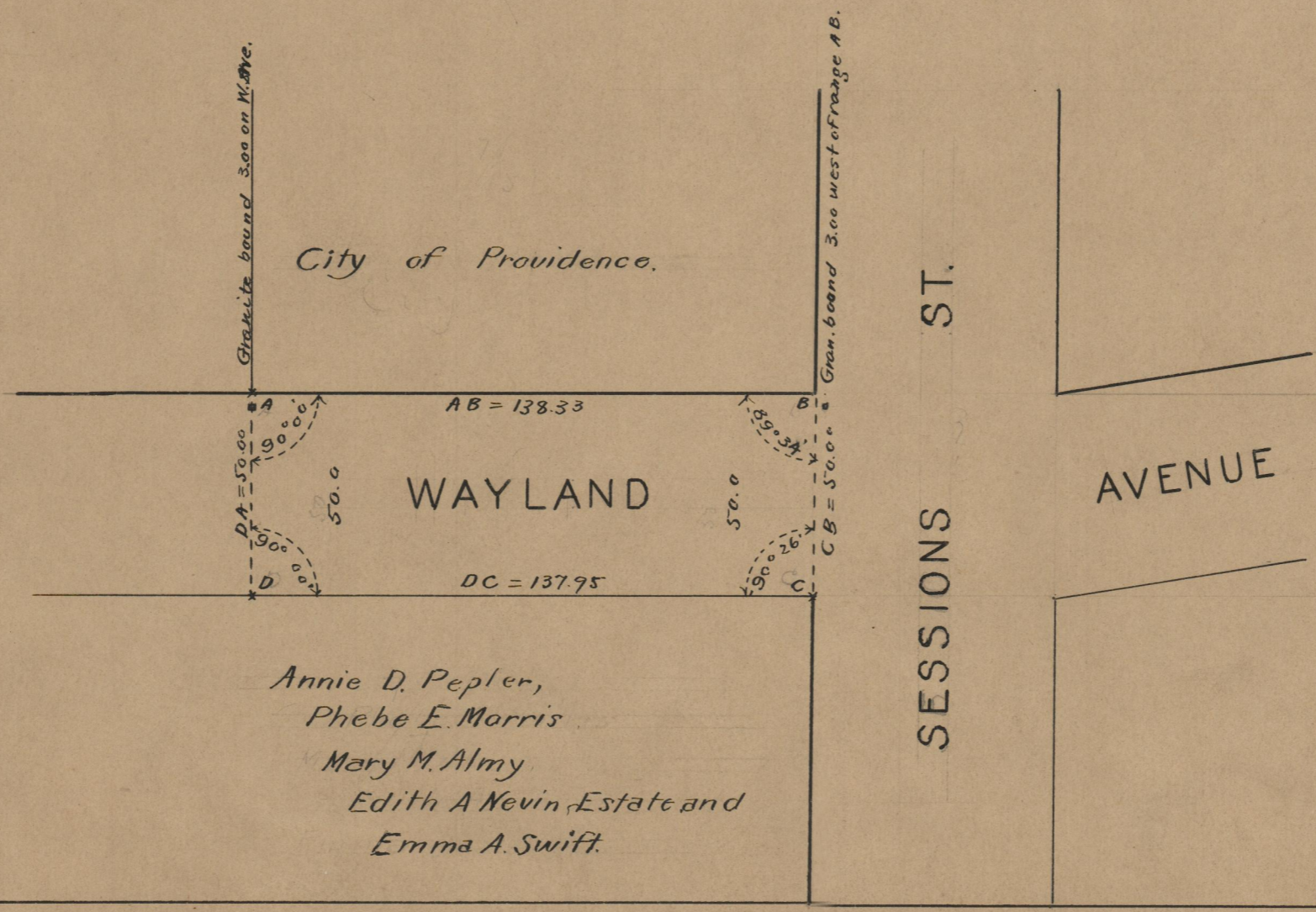
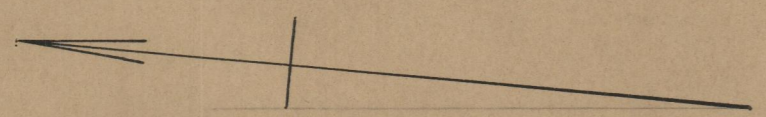
PLAT OF
WAYLAND AVENUE
FROM SESSIONS ST. NORTHERLY 138.33 FEET.
SCALE 40 FEET PER INCH.

Note, The area declared a public highway
is indicated by the letters A B C D.
The lines thus fixed conform to the
deed recorded in Deed book 558, page 268,
in the office of the Recorder of Deeds.

Declared a Public Highway
by Resolution of the
Board of Aldermen
June 28, 1916

138.33
137.95
2)276.28
138.14

Witness, _____
City Clerk.



| | |
|------------|------|
| OFFICE No. | 193 |
| DRAWER " | 74 |
| SHEET " | A-89 |