

Note, The area declared a public highway is indicated by the letters ABCD.

The lines thus fixed conform to the deeds recorded in Deed book 558, pages 277-8-9, 280-1-2-3-4-5-6-7-8-9, 292, 307-8, in the office of the Recorder of Deeds.

PLAT OF

CARLETON STREET

FROM ATWELLS AVE. TO NORTH LINE OF LOT 23

ON THE HIGHLANDS PLAT, SO CALLED.

SCALE 50 FEET PER INCH.

Declared a Public Highway
by Resolution of the
Board of Aldermen,

June 15, 1916.

522.06
512.72
211034.78
517.39

PROVIDENCE, R.I.

CITY ENGINEERS OFFICE

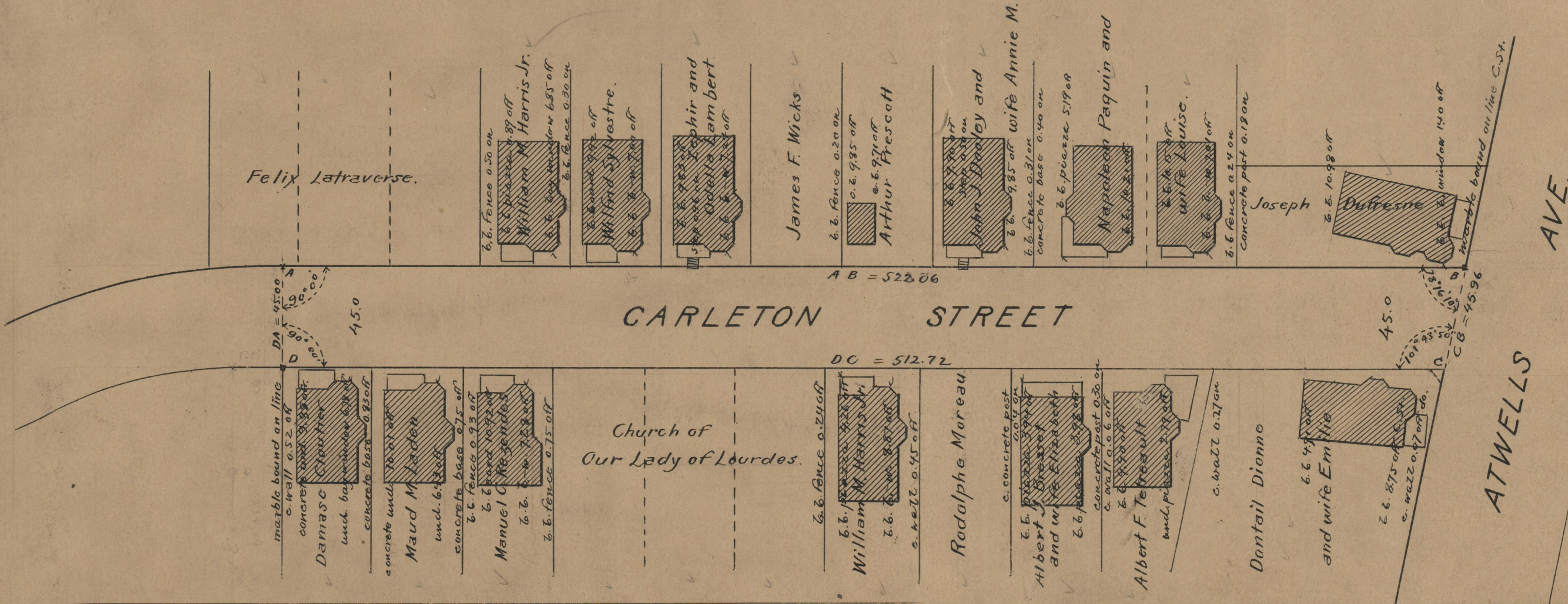
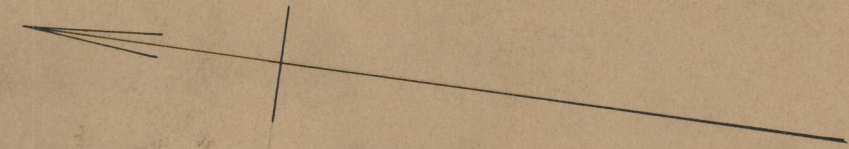
STREET LINE DEPT.

July 5, 1916

042035-6

Witness,

City Clerk:



OFFICE No. 492
DRAWER " 74
SHEET " A-88