

XXXIV 4.136

PROVIDENCE, R.I.
CITY ENGINEERS OFFICE
STREET LINE DEPT.

July 5, 1916

042033

Note, The area established as a public highway is indicated by the letters A E G H E A.
The area declared a public highway is indicated by the letters F B C D H G F
The lines thus fixed conform to the deeds recorded in Deed book 515, page 340, Deed book 518, page 130, and Deed book 538, page 92, in the office of the Recorder of Deeds.

PLAT OF TENTH STREET

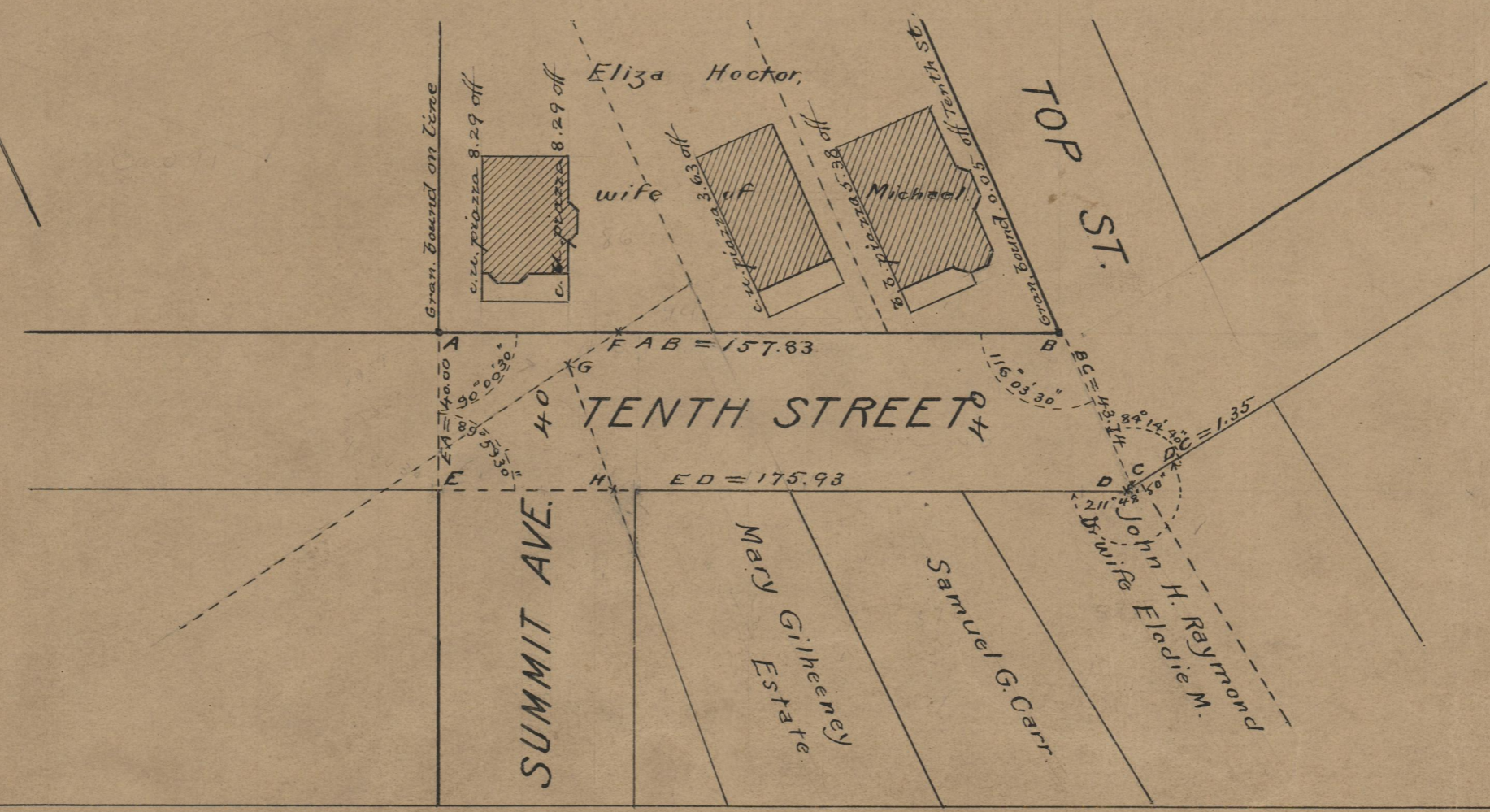
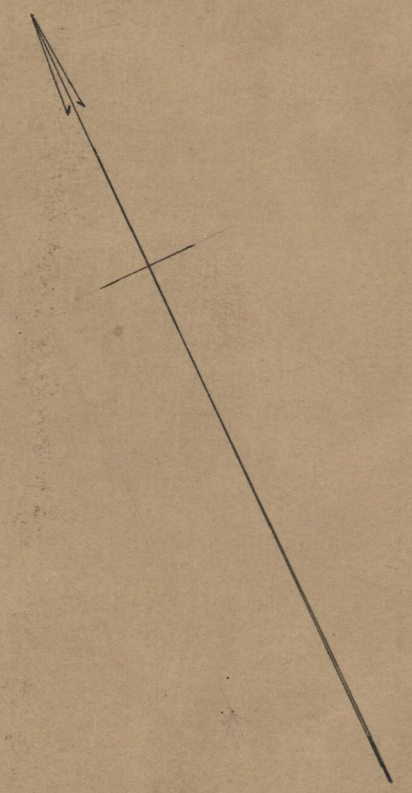
FROM WESTERLY LINE OF SUMMIT AVE. TO TOP ST.

SCALE 40 FEET PER INCH.

ESTABLISHED AND DECLARED
A PUBLIC HIGHWAY
BY RESOLUTION OF THE
BOARD OF ALDERMEN

157.83
175.93
1.35
2)335.11
167.550
July 6, 1916.

Witness, _____
City Clerk.



93° 45' 20" C
148° 11' 10" DC = 135'

74
A-87

OFFICE No.	491
DRAWER	74
SHEET	A-87