

PROVIDENCE, R.I.  
CITY ENGINEER'S OFFICE  
STREET LINE DEPT.  
May 31, 1916

041960

# PLAT OF SLATER AVENUE

FROM GLEN ROAD TO PRESIDENT AVE.  
SCALE 60 FEET PER INCH.

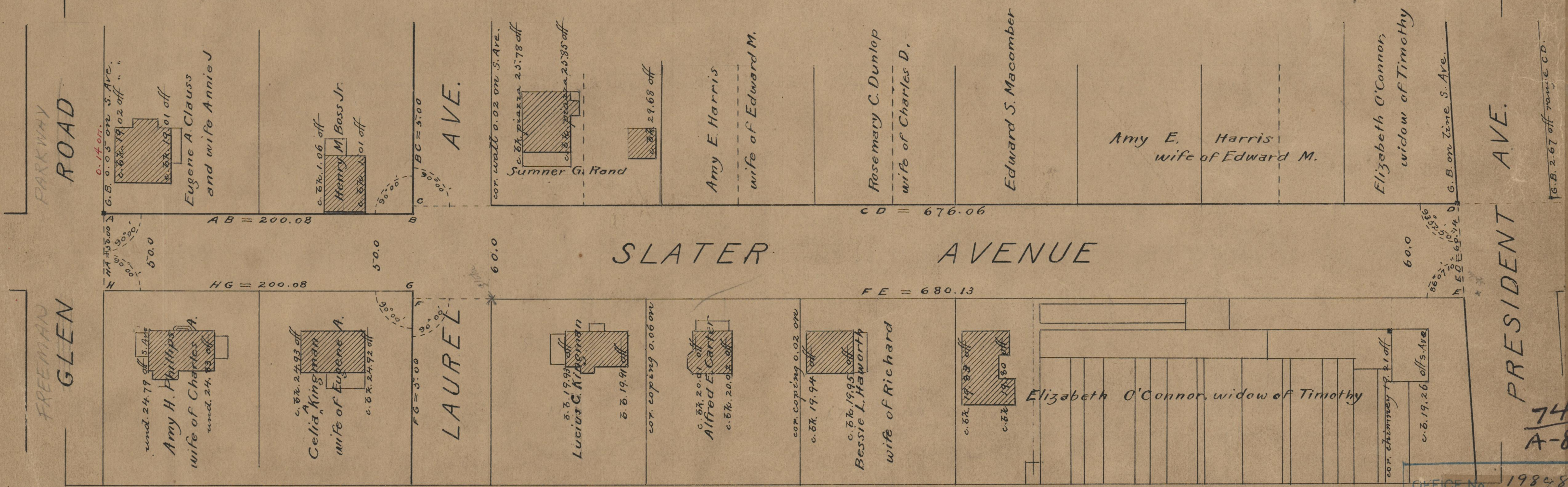
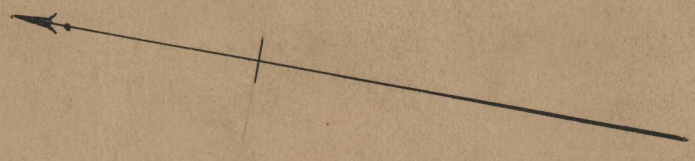
Declared a Public Highway  
by Resolution of the  
Board of Aldermen.

May 4, 1916.

200.08  
676.06  
680.13  
200.08  
2) 1756.35  
878.175

Witness, \_\_\_\_\_  
City Clerk.

Note, The area declared a public highway  
is indicated by the letters A B C D E F G H  
The lines thus defined conform to the  
deeds recorded in Deed book 365, pages  
79 and 270, Deed book 366, page 323, Deed book  
406, page 153, and Deed book 512, page 75,  
in the Office of the Recorder of Deeds.



74  
A-86

OFFICE No. 19848  
DRAWER " 74  
SHEET A-86