

PROVIDENCE, R.I.  
CITY ENGINEER'S OFFICE  
STREET LINE DEPT.

May 31, 1916

041958

Note, The area declared a public highway is indicated by the letters A B C D.  
The lines thus fixed conform to the deeds recorded in Deed book 533, page 382, Deed book 543, page 380, Deed book 552, page 454, Deed book 553, pages 418 and 433, and Deed book 558, page 171, in the office of the Recorder of Deeds.

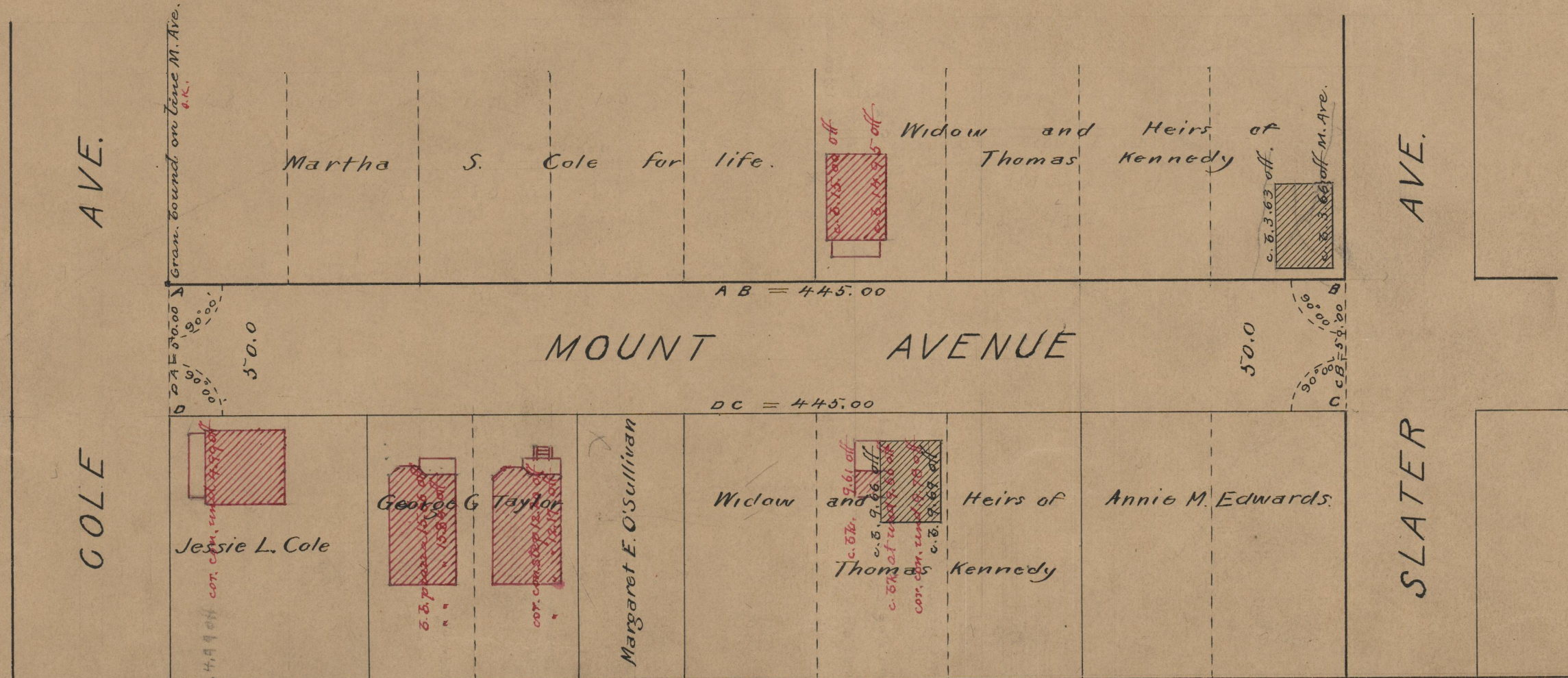
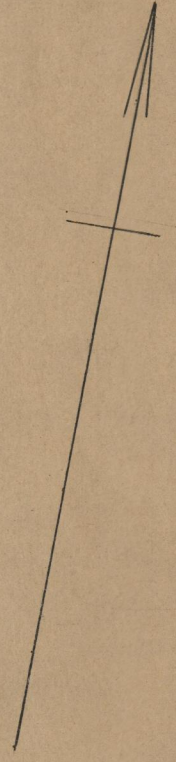
# PLAT OF MOUNT AVENUE

FROM COLE AVE. TO SLATER AVE.

SCALE 50 FEET PER INCH.

Declared a Public Highway  
by Resolution of the  
Board of Aldermen  
May 4, 1916.  
445.00

Witness \_\_\_\_\_  
City Clerk.



74  
A-85

OFFICE No. 19840  
DRAWER, 74  
A-85