

May 31, 1916

041952-3

PLAT OF LUZON AVENUE

FROM WAYLAND AVE. TO COLE AVE.

SCALE 50 FEET PER INCH.

DECLARED A PUBLIC HIGHWAY
BY RESOLUTION OF THE
BOARD OF ALDERMEN

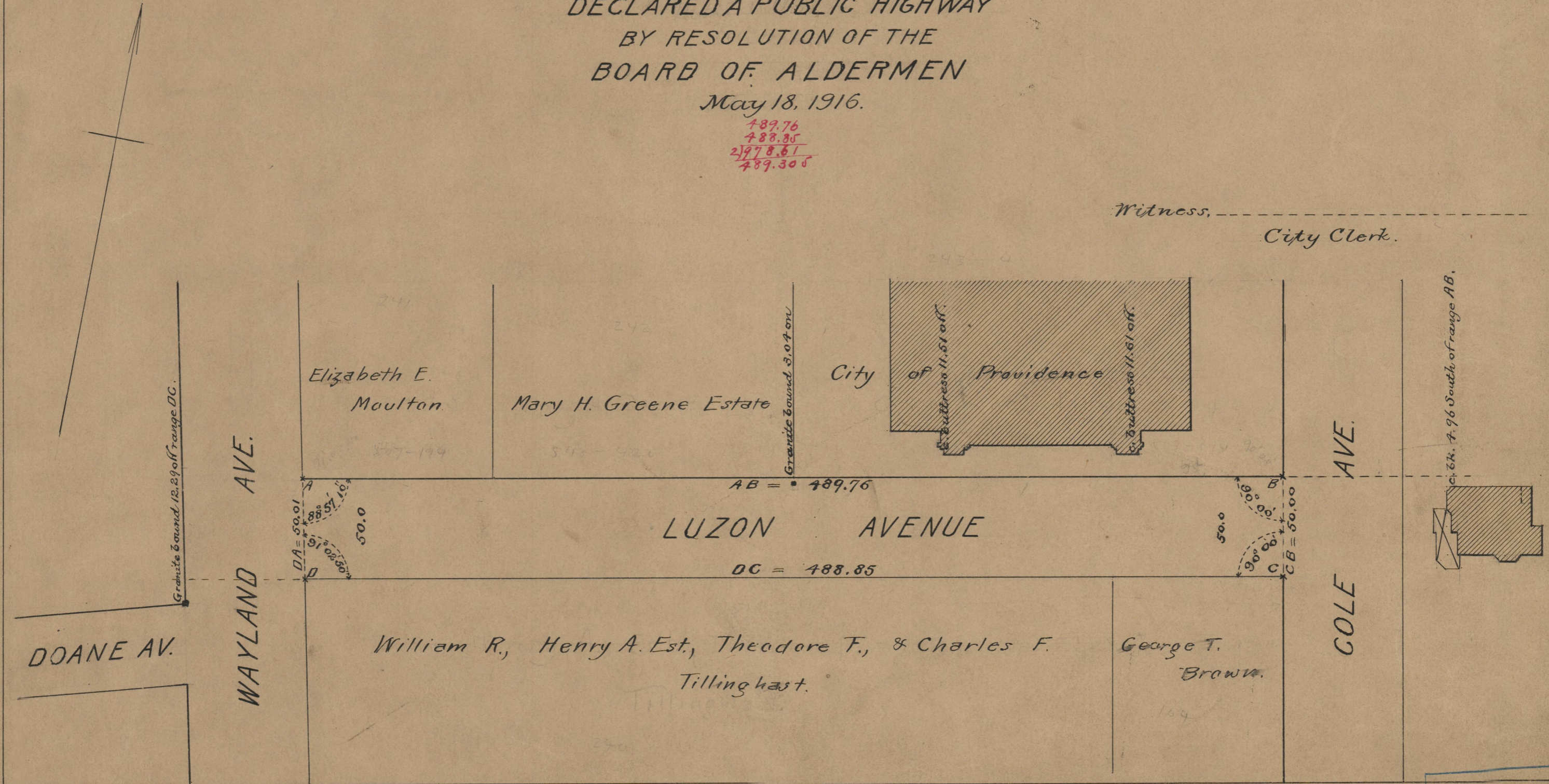
May 18, 1916.

789.76
788.85
2978.61
789.305

Witness, _____
City Clerk.

Note, The area declared a public highway
is indicated by the letters ABCD.

The lines thus defined conform to the
deeds recorded in Deed book 507, page
194, Deed book 511, page 124, Deed book
512, page 178, and Deed book 548, page 420,
in the office of the Recorder of Deeds.



OFFICE No.	19837
DRAWER	74
SHEET	A-82