

Note. The area declared a public highway is indicated by the letters A B C D.

PLAT OF CHAD BROWN STREET

FROM OAKLAND AVE. TO THE CENTRE
LINE OF RUGGLES ST.
SCALE 40 FEET PER INCH.

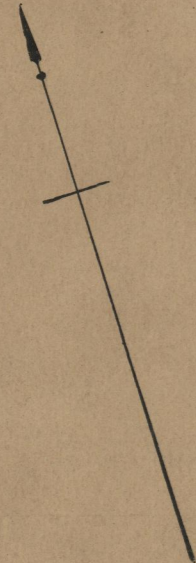
Established as a Public Highway
by Resolution of the
Board of Aldermen
June 1, 1916,

339.92
340.15
24680.07
340.035

PROVIDENCE, R.I.
CITY ENGINEER'S OFFICE
STREET LINE DEPT.
May 31, 1916

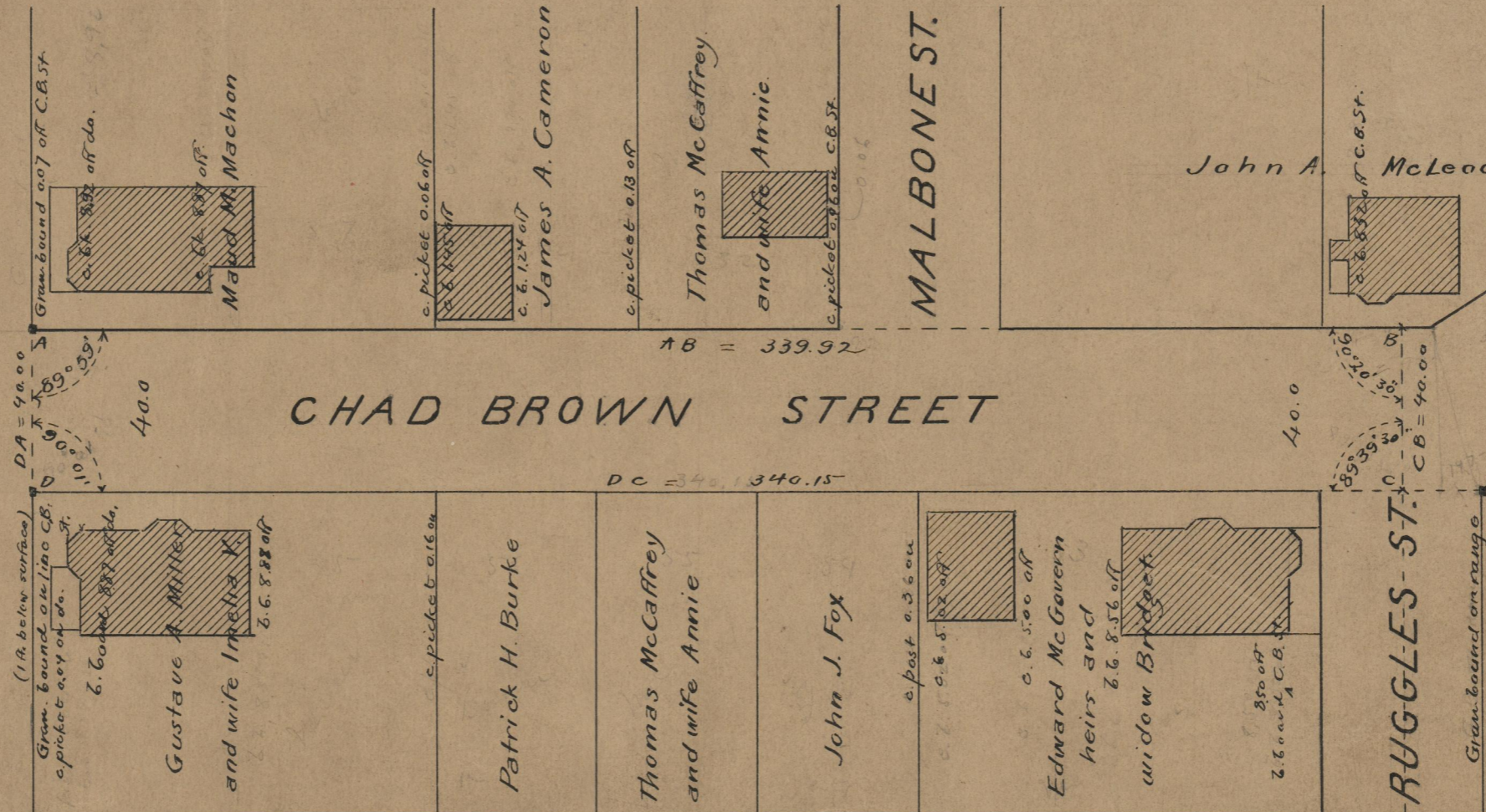
041950

Witness, _____
City Clerk.



AVE.

OAKLAND



OFFICE No. 19831
DRAWER 74
SHEET A-01

74
A81