

May 31, 1916

041948

PLAT OF
LEWIS STREET

FROM HOPE ST. TO MORRIS AVE.

SCALE 40 FEET PER INCH.

DECLARED A PUBLIC HIGHWAY

BY RESOLUTION OF THE
 BOARD OF ALDERMEN,

April 20, 1916.

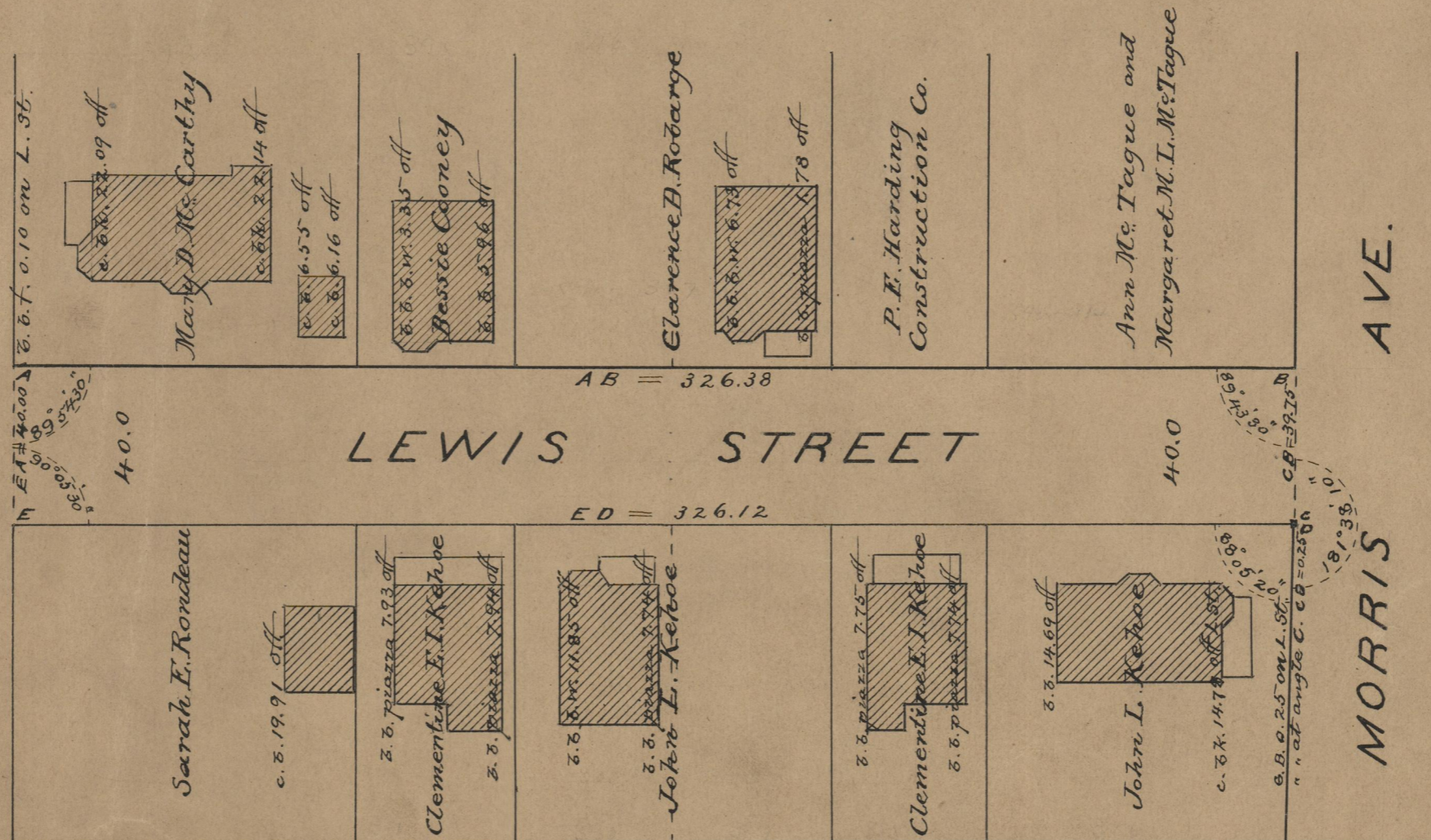
326.25

Note. The area declared a public highway
 is defined by the letters ABCDE.

The lines thus fixed conform to the
 deeds recorded in Deed Books 503, pages
 383, and 432, 505 page 396, 540 page 414,
 and 541 pages 301 and 307 in the Office of
 the Recorder of Deeds.



HOPE ST.



MORRIS AVE.

74
480

OFFICE No. 19835
 DRAWER " 7
 SHEET