

Note, The area declared a public highway is indicated by the letters A B C.  
 The lines thus fixed conform to the deed recorded in Deed book 555, page 338, in the office of the Recorder of Deeds

# PLAT OF DOUGLAS AVENUE

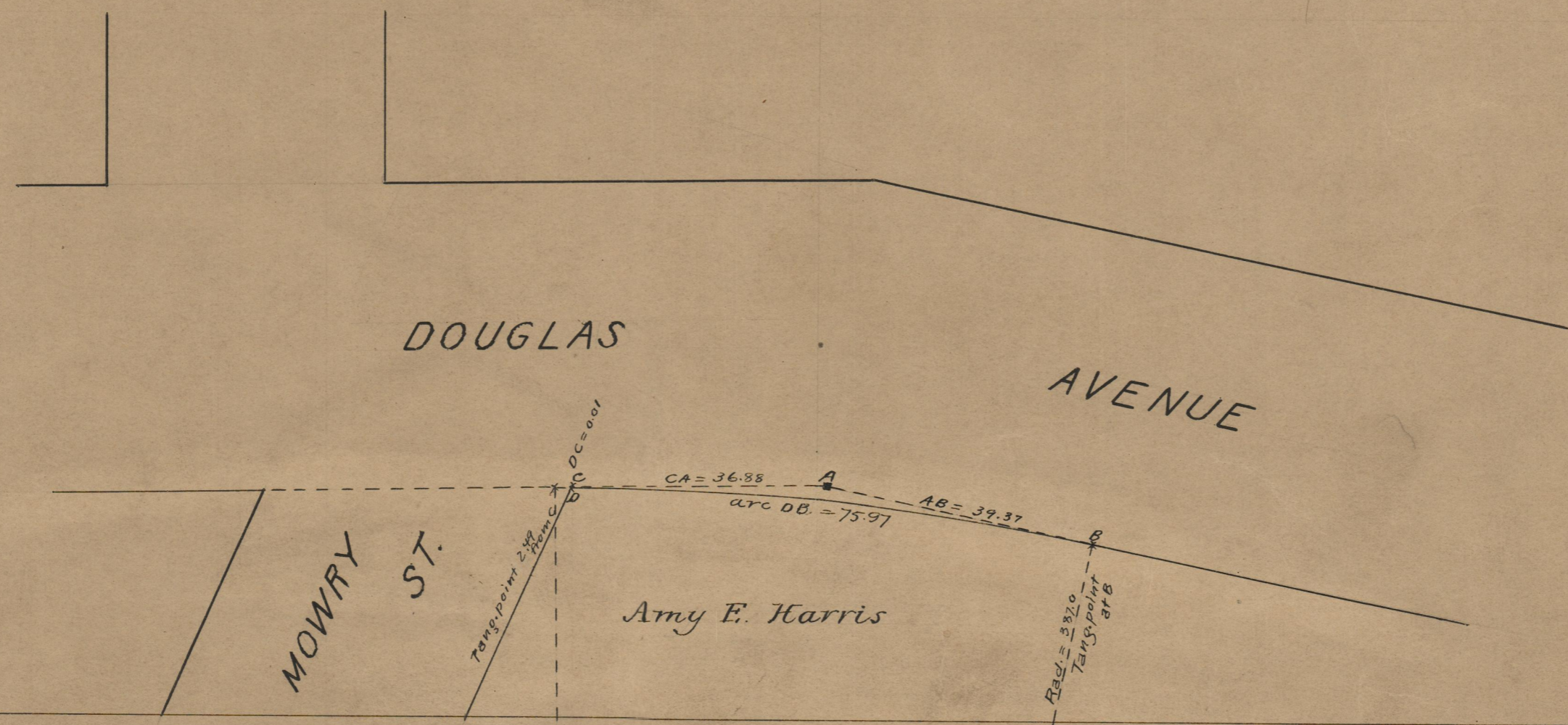
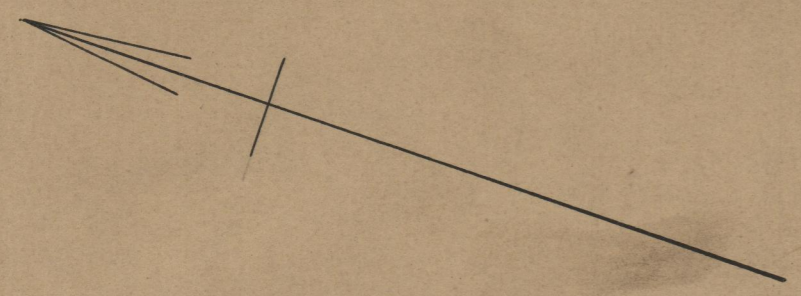
PROVIDENCE, R.I.  
 CITY ENGINEER'S OFFICE  
 STREET LINE DEPT.  
Apr. 27, 1916  
041829

SHOWING WIDENING AT MOWRY ST.  
 SCALE 20 FEET PER INCH.

Declared a Public Highway  
 by Resolution of the  
 Board of Aldermen.  
 February 17, 1916.

36.88  
 39.37  
 75.97  
 151.22  
 76.11

Witness, \_\_\_\_\_  
 City Clerk.



DOUGLAS

AVENUE

MOWRY ST.

Amy E. Harris

74  
 A-78

OFFICE No.	19815
DRAWER "	74
SHEET	A-78