

PROVIDENCE, R.I.
CITY ENGINEER'S OFFICE
STREET LINE DEPT.

Apr. 27, 1916

041824

PLAT OF GEORGIA AVENUE

FROM ALLENS AVE. TO FORT AVE.

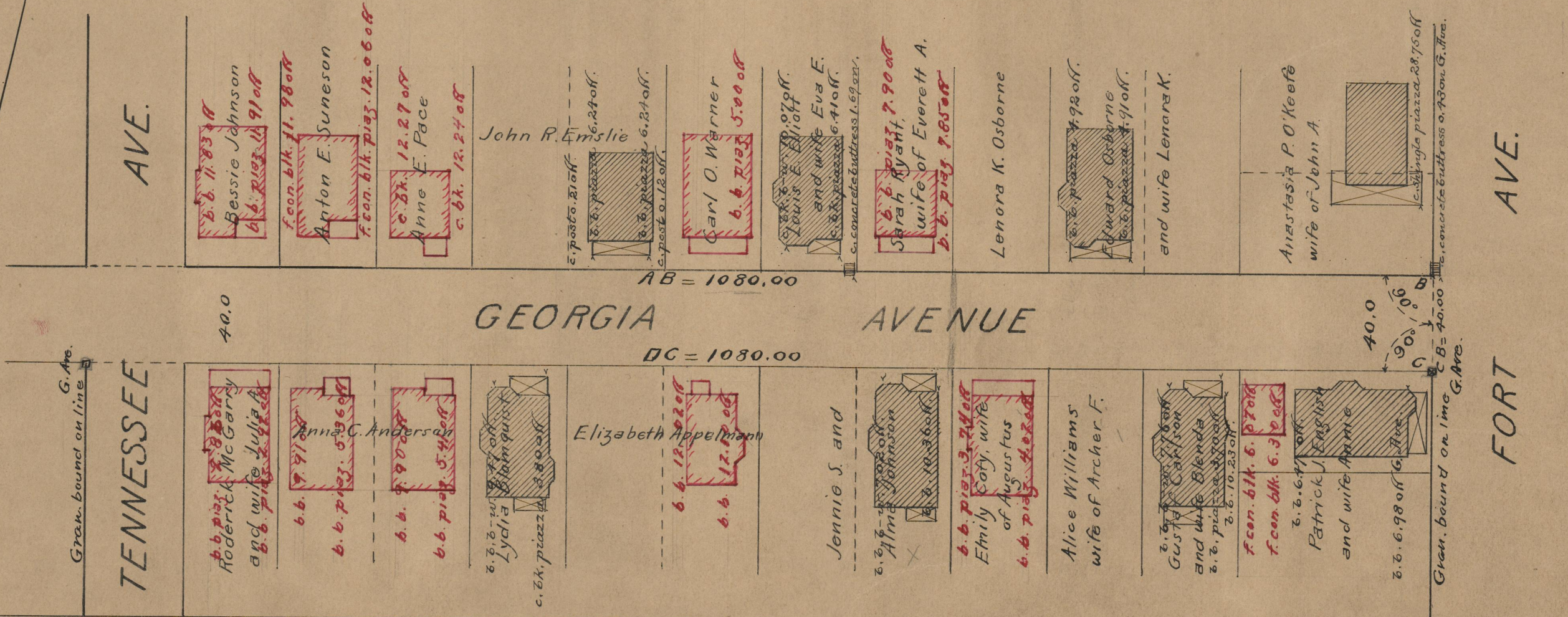
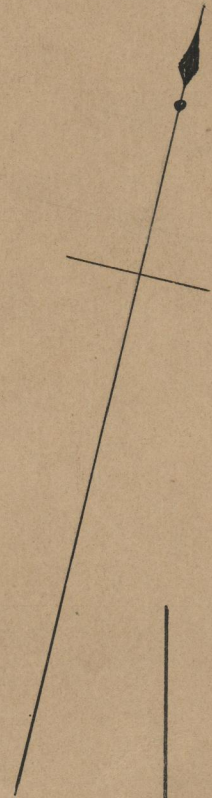
IN TWO SHEETS

SCALE 50 FEET PER INCH,

Declared a Public Highway
by Resolution of the
Board of Aldermen
January 20, 1916.

Witness, _____
City Clerk

Note, The area declared a public highway
is indicated by the letters A B C D.
The lines thus defined conform to the
deed recorded in Deed book 487, page 317,
in the office of the Recorder of Deeds.



OFFICE No.	19813
DRAWER	74
SHEET	A-76