

PROVIDENCE, R.I.
CITY ENGINEER'S OFFICE
STREET LINE DEPT.
Apr. 27, 1916

041823 3

PLAT OF GEORGIA AVENUE

FROM ALLENS AVE. TO FORT AVE.

IN TWO SHEETS

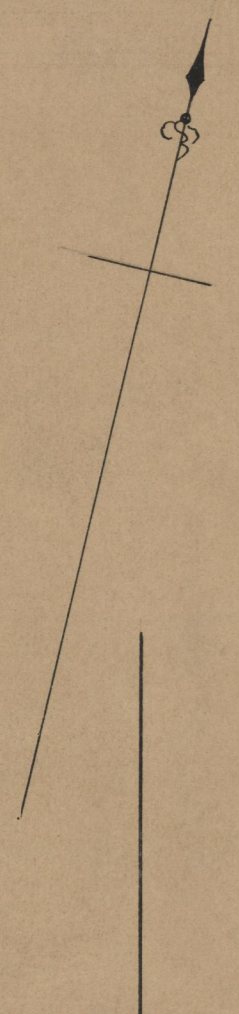
SCALE 50 FEET PER INCH.

Declared a Public Highway
by Resolution of the
Board of Aldermen
January 20, 1916.

1080.00

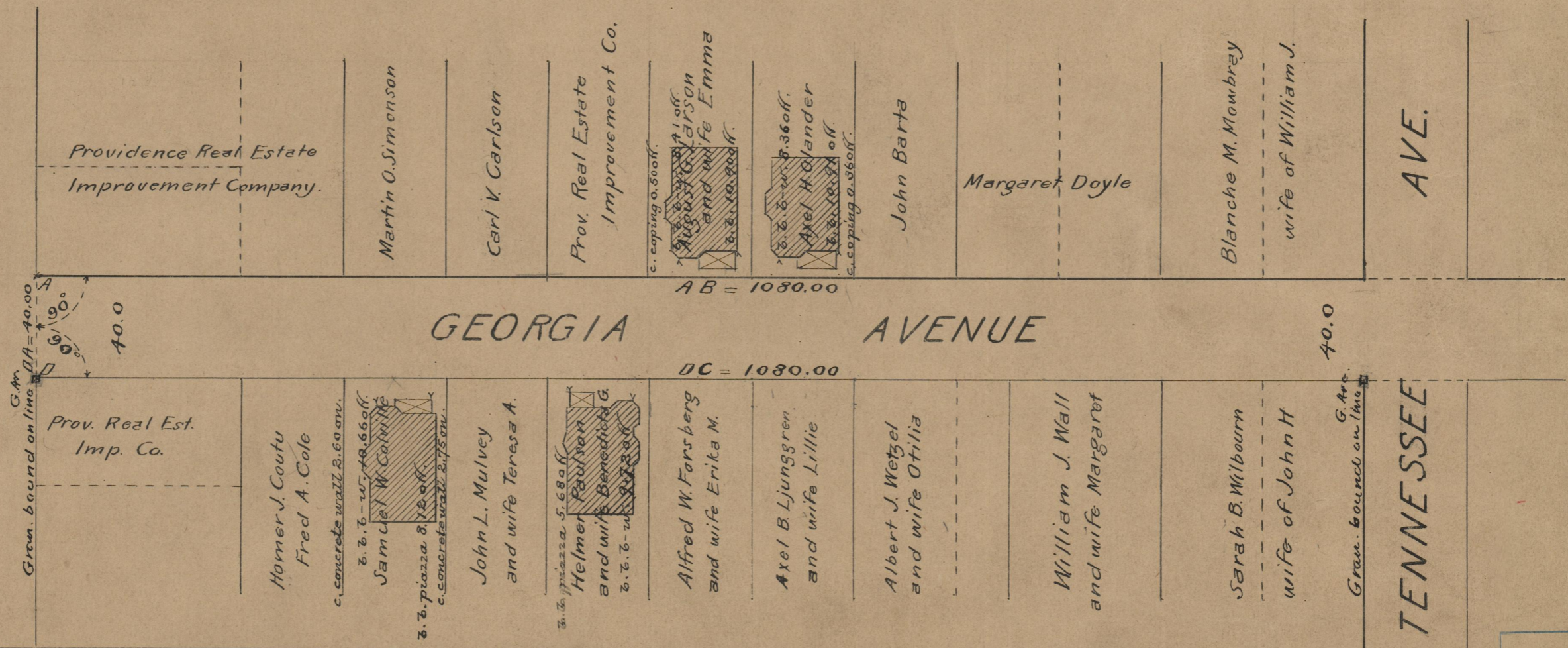
Witness, _____
City Clerk.

Note. The area declared a public highway
is indicated by the letters ABCD.
The lines thus defined conform to the
deed recorded in Deed book 487, page
317 in the office of the Recorder of Deeds.



ALLENS AVE.

ALLENS



TENNESSEE

74
A-75

OFFICE No. 19812
DRAWER 74
SHEET A-75