

041487-3

PROVIDENCE, R.I.  
CITY ENGINEER'S OFFICE  
STREET LINE DEPT.

Dec. 27, 1915

041487

Note. The area declared a public highway is indicated by the letters A BCDE.

The lines thus fixed conform to the deeds recorded in Deed book 548, pages 430 and 431, and Deed book 555, page 14, in the office of the recorder of deeds.

# PLAT OF EIGHTH STREET

FROM CENTER LINE OF SARAH ST.  
TO THE ANGLE NEAR SUMMIT AVE.

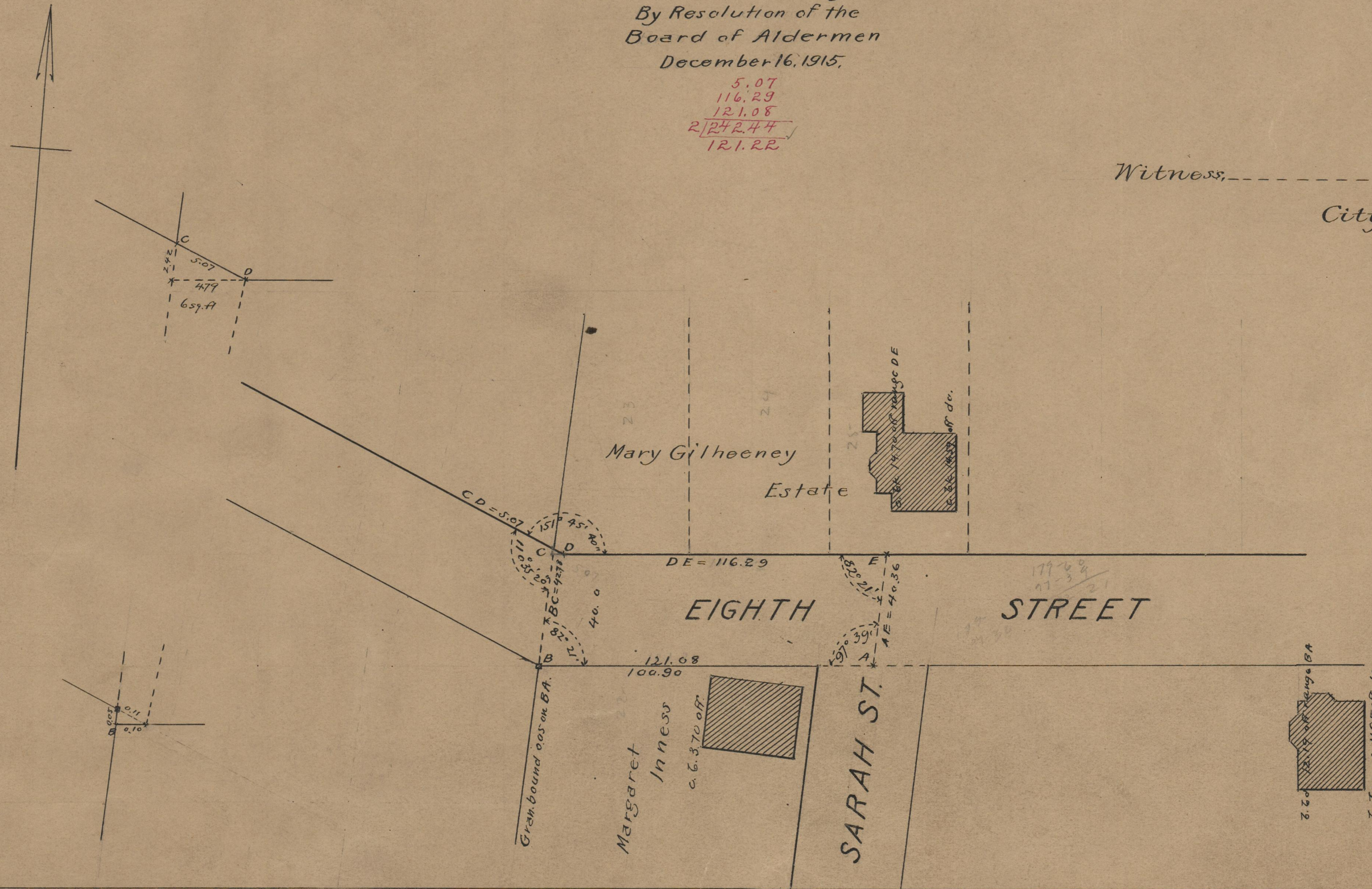
SCALE 40 FEET PER INCH.

Declared a Public Highway  
By Resolution of the  
Board of Aldermen  
December 16, 1915.

5.07  
116.29  
121.08  
2124.44  
121.22

Witness, \_\_\_\_\_

City Clerk.



74  
A-74  
74  
A-74  
74  
A-74

74  
A-74

OFFICE No. 0196  
DRAWN 74