

1362540

041388-9

City Prop. Dept.

PROVIDENCE, R.I.  
CITY ENGINEER'S OFFICE  
STREET LINE DEPT.  
Nov. 15, 1915  
041388

# PLAT OF SMITH STREET

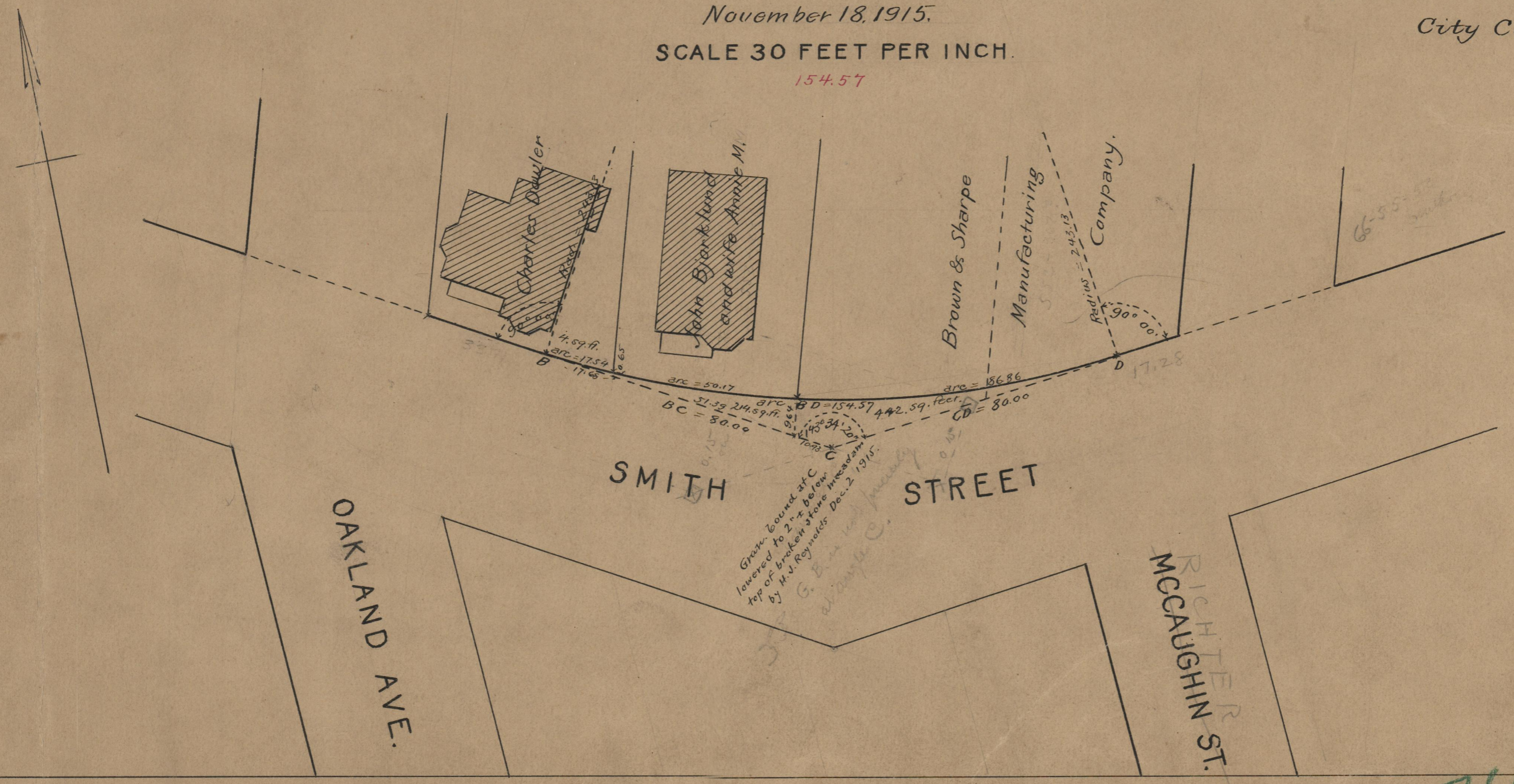
## SHOWING WIDENING BETWEEN OAKLAND AVE AND McCAUGHIN ST.

Declared a Public Highway  
By Resolution of the  
Board of Aldermen,  
November 18, 1915.

SCALE 30 FEET PER INCH.  
154.57

Witness, \_\_\_\_\_  
City Clerk.

Note, The area declared a public highway  
is indicated by the letters B C D.  
The lines thus fixed conforms to the deeds  
recorded in Deed book 552, pages 283, 286  
and 367, in the office of the Recorder of Deeds.



74  
A-73

OFFICE No.	19615
DRAWER	74
SHEET	73