

PLAT OF LATHAM STREET

PROVIDENCE, R.I.
CITY ENGINEER'S OFFICE
STREET LINE DEPT.
Dec 10, 1915

041433

Note, The area declared a public highway and added to Latham Street is indicated by the letters FHGF.

The portion of Latham Street declared useless is shown by the letters ABCDEA.

The lines thus fixed agree with plat numbered 040231, to which the resolution of abandonment refers.

SHOWING CHANGE OF LINES
BETWEEN PLAINFIELD ST. AND LENA ST.

DECREEED AND ORDERED
BY RESOLUTIONS OF THE
BOARD OF ALDERMEN,
November 18, 1915.

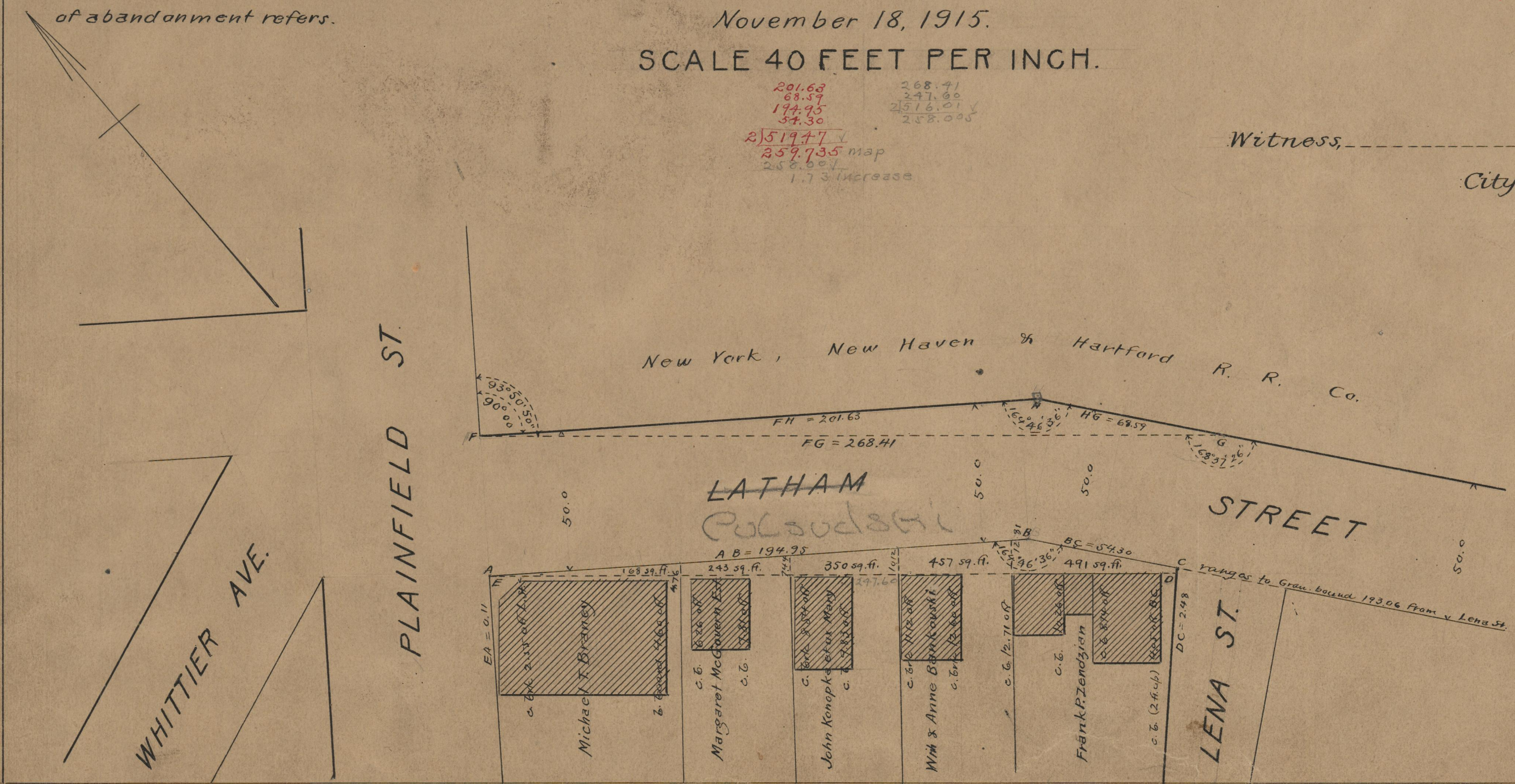
SCALE 40 FEET PER INCH.

201.63
68.59
194.95
54.30
2519.77
259.735 map
258.007
1.73 increase

268.71
247.00
2516.01
258.005

Witness, _____

City Clerk



74
A-72

OFFICE No. 1962
DRAWER,,
SHEET