

PROVIDENCE, R.I.  
CITY ENGINEER'S OFFICE  
STREET LINE DEPT.  
Dec 10, 1915.

041432

Note, Of the area declared public highways,  
the portion shown on this plat is indicated  
by the letters P G H r Y V W X h I J O P  
The lines thus fixed conform to the  
plat numbered 040258 to which reference  
is made by the resolution.

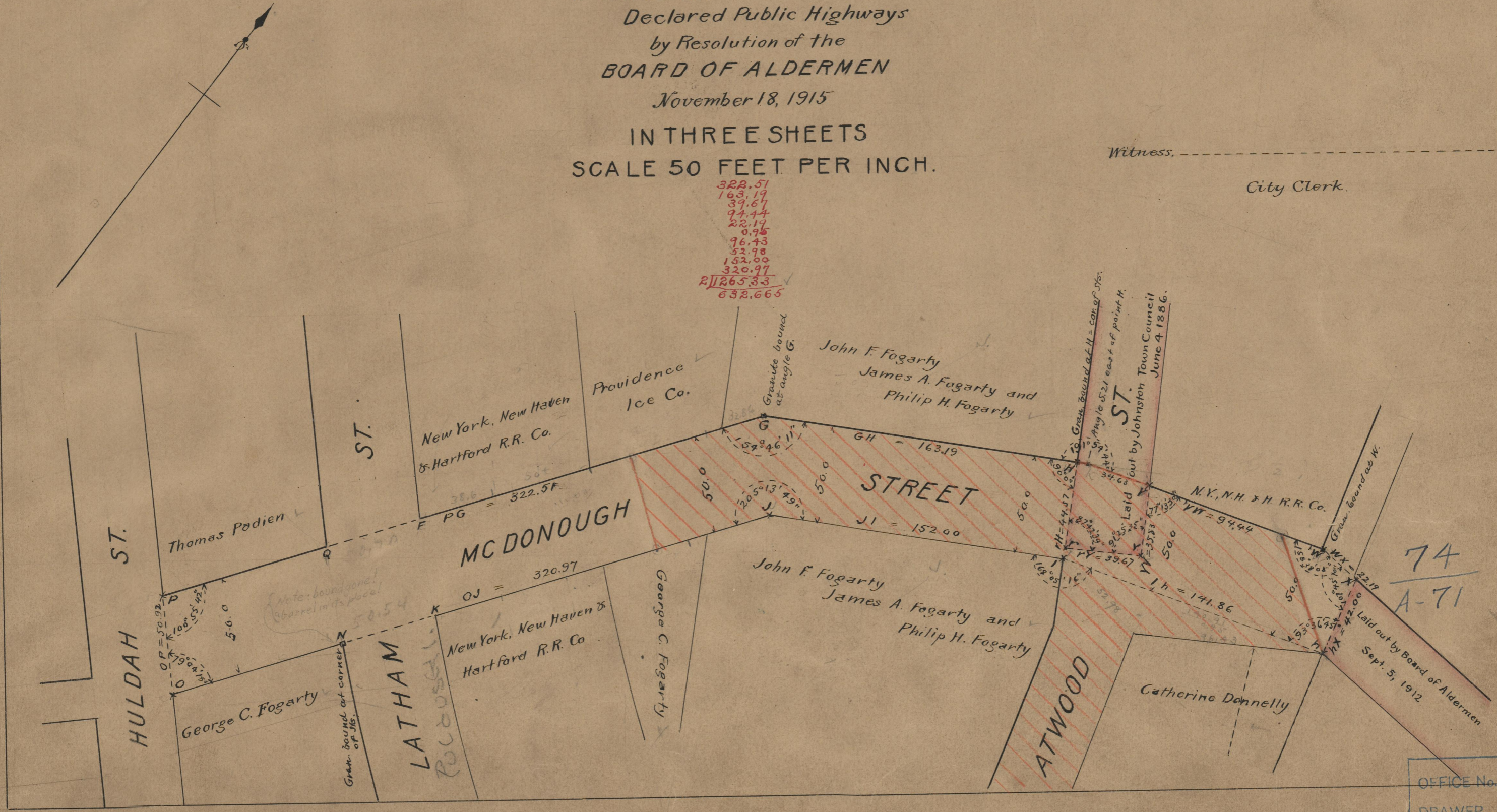
# PLAT OF PORTIONS OF PLAINFIELD ST., LATHAM ST. AND McDONOUGH ST.

Declared Public Highways  
by Resolution of the  
BOARD OF ALDERMEN  
November 18, 1915

IN THREE SHEETS  
SCALE 50 FEET PER INCH.

Witness, \_\_\_\_\_  
City Clerk.

322.51  
163.19  
39.67  
97.74  
22.19  
0.95  
96.43  
52.98  
152.00  
320.97  
21265.33  
632.665



74  
A-71

74  
A-71

OFFICE No. 1962  
DRAWER, 71  
SHEET