

Nov. 24, 1915

041402

PLAT OF HILLTOP AVENUE

FROM SMITH ST. TO EATON ST.

SCALE 80 FEET PER INCH.

Declared a Public Highway

by Resolution of the
Board of Aldermen

November 18, 1915.

1063.65
1087.37
21215.02
1075.51

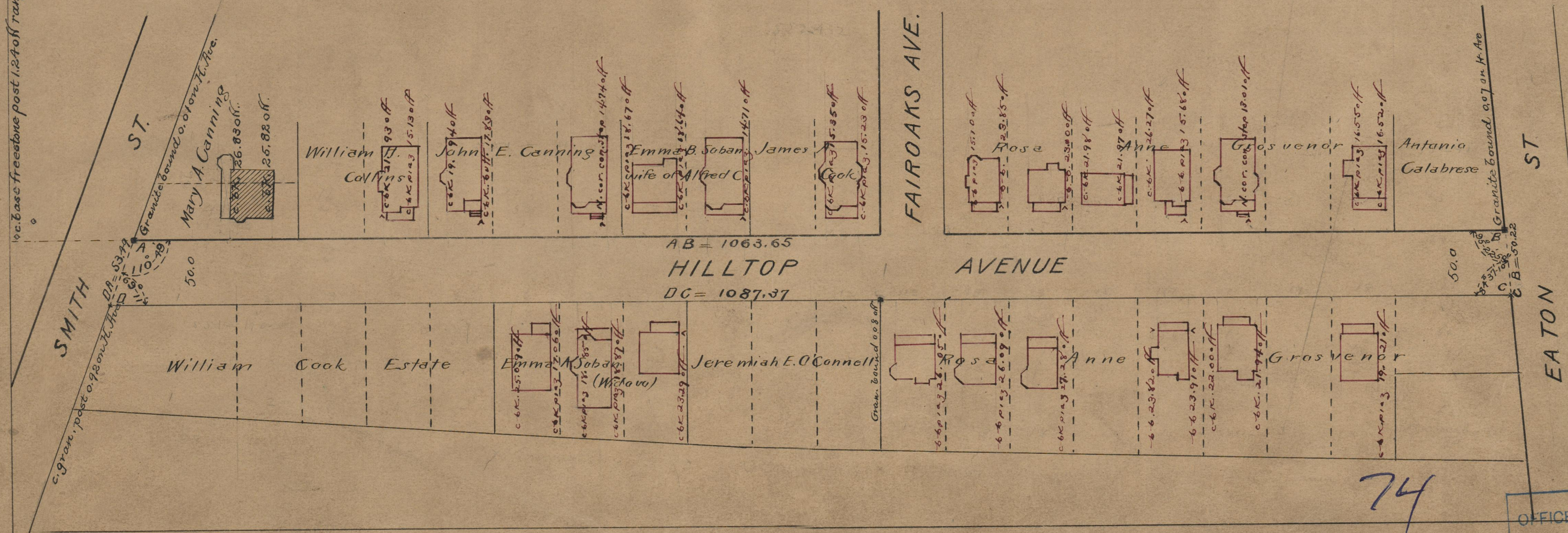
Witness, _____

City Clerk.

Note, The area declared a public highway
is indicated by the letters ABCD.

The lines thus fixed conform to the deeds
in Deed book 548, pages 313, 336 and 392, Deed
book 551, pages 41, 43, 44, 190 and 250, and
Deed book 552, pages 359 and 432 in the
office of the Recorder of Deeds.

1/2 c. base freestone post 1.24 off range AB.



AB = 1063.65

HILLTOP AVENUE

DC = 1087.37

74

A-68

OFFICE No. 19621
DRAWER " 74
" A