

Nov. 24, 1915

041404

PLAT OF BELAIR AVENUE

FROM CYPRESS ST. TO LARCH ST.

SCALE 40 FEET PER INCH

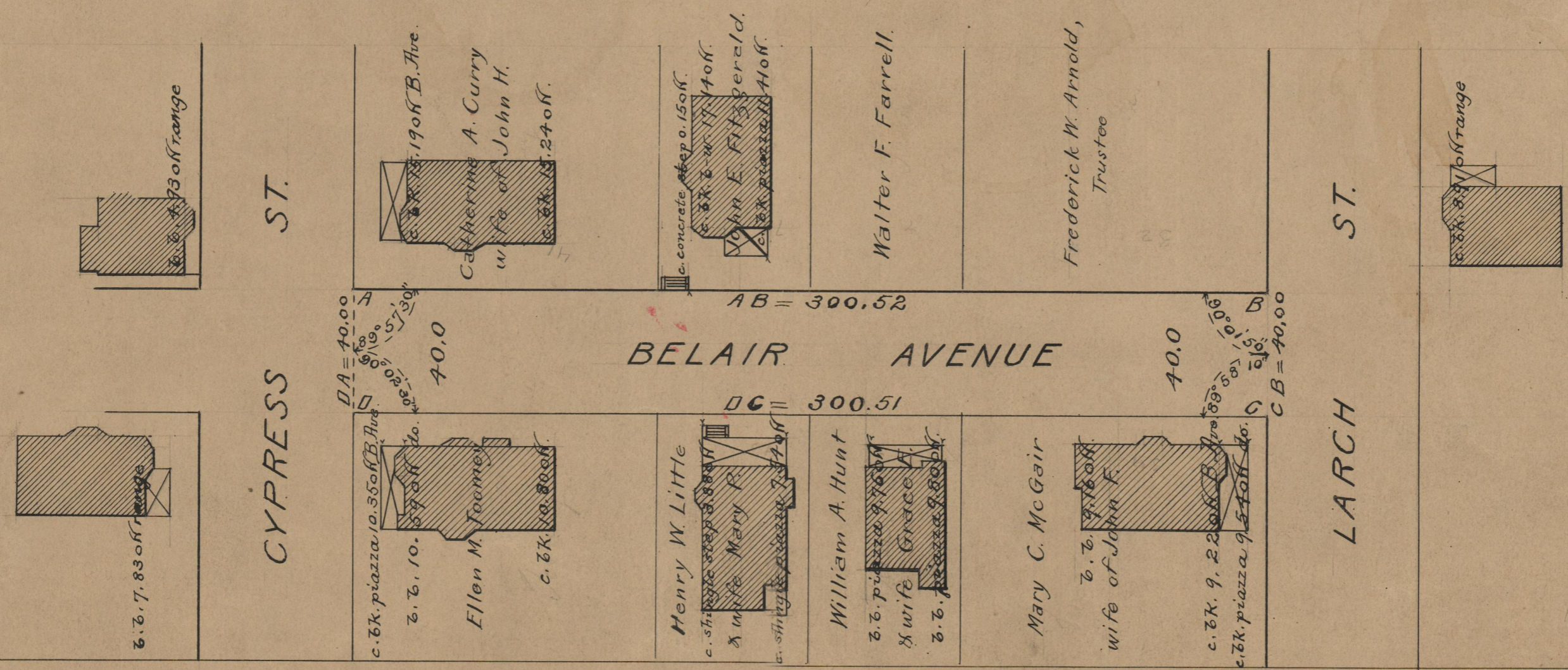
Declared a Public Highway
by Resolution of the
Board of Aldermen
November 18, 1915.

300.52

Witness: _____
City Clerk.

Note, The area declared a public highway
is indicated by the letters ABCD.

The lines thus fixed conform to the deed
recorded in Deed book 505, page 382, in the
Office of the Recorder of Deeds.



OFFICE No. 19620
DRAWER " 74
SHEET " A-67