

PROVIDENCE, R.I.
CITY ENGINEER'S OFFICE
STREET LINE DEPT.

Oct. 15, 1915

041268

Note, The area declared a public highway is indicated by the letters ABCD.

The lines thus fixed conform to the deed recorded in Deed book 433, page 12 in the office of the Recorder of Deeds.

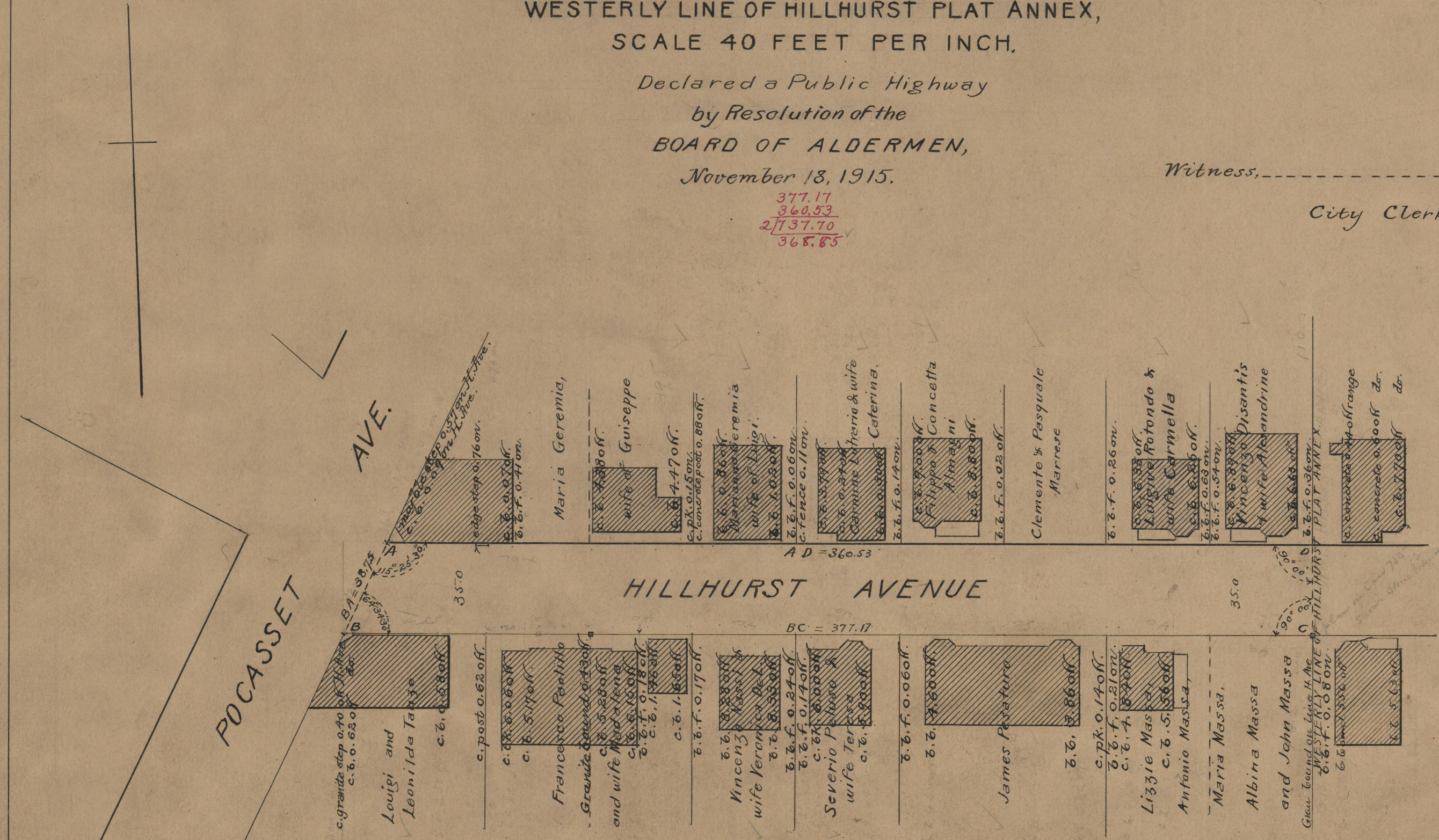
PLAT OF HILLHURST AVENUE

FROM POCASSET AVE. TO
WESTERLY LINE OF HILLHURST PLAT ANNEX,
SCALE 40 FEET PER INCH.

Declared a Public Highway
by Resolution of the
BOARD OF ALDERMEN,
November 18, 1915.

377.17
360.53
2737.70
368.85

Witness, _____
City Clerk.



POCASSET

AVE.

HILLHURST AVENUE

74
A-66

OFFICE No. 19619
DRAWER 74
SHEET A-66