

Note, The area declared a public highway is indicated by the letters A B C D.
 The lines thus fixed conform to the deeds in Deed book 540, page 321, Deed book 543, pages 233, 240, 245, 246, 252, 270, 280, 282, 283, 284, and Deed book 555, page 96, in the office of the Recorder of Deeds.

PLAT OF ARDOENE STREET

FROM RESERVOIR AVE.
 TO EASTERLY LINE OF NANCY WATERMAN PLAT

SCALE 60 FEET PER INCH
 Declared a Public Highway
 by Order of the
 BOARD OF ALDERMEN
 November 18, 1915.

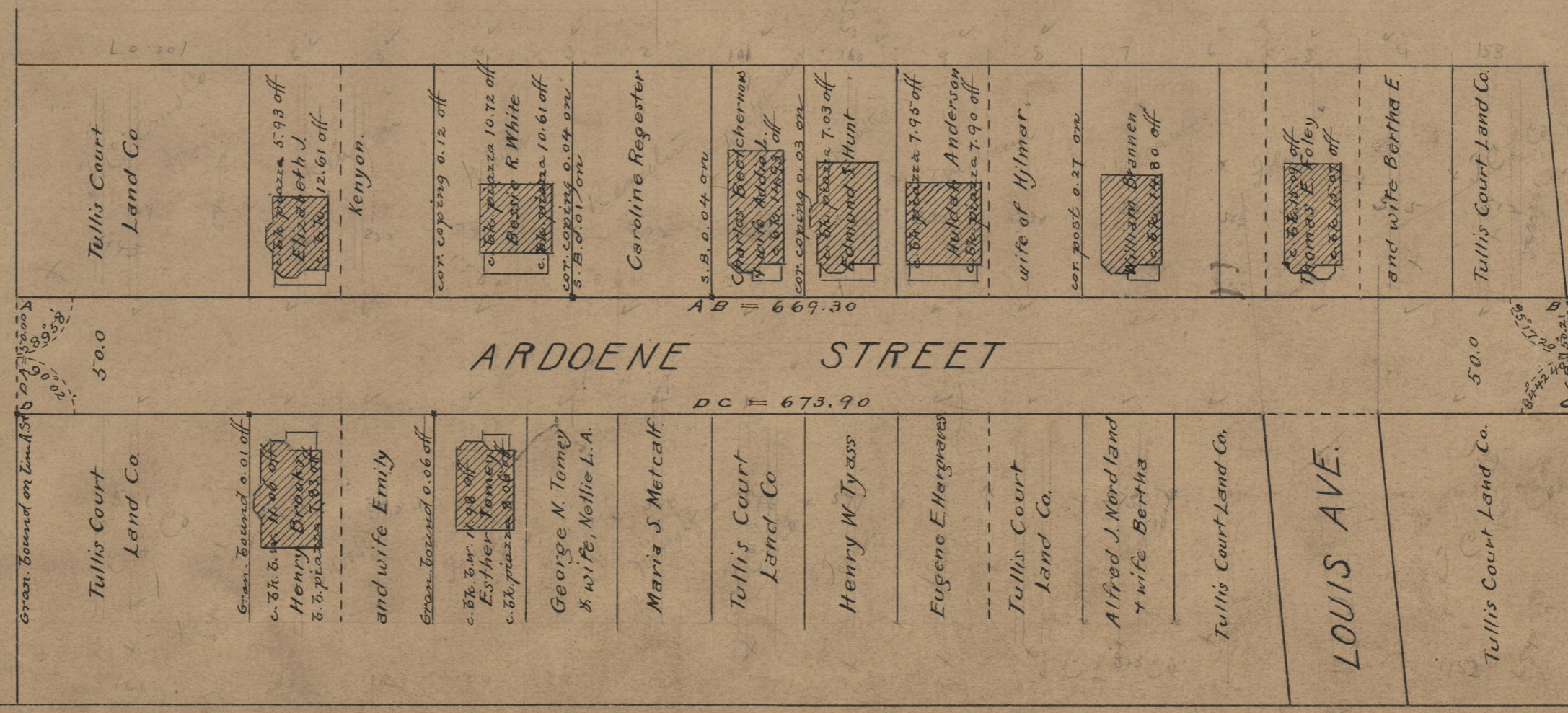
PROVIDENCE, R.I.
 CITY ENGINEER'S OFFICE
 STREET LINE DEPT.
 Oct. 15, 1915
 041266

673.90
 669.30
 2/1343.20
 671.60

Witness, _____
 City Clerk.



RESERVOIR AVE.



74
 A 65

OFFICE No. 1961
 DRAWER 74
 SHEET A