

PROVIDENCE, R.I.
 CITY ENGINEER'S OFFICE
 STREET LINE DEPT.
 Nov. 15, 1915

041384

PLAT OF GALLATIN STREET

FROM CENTER LINE OF EMERSON ST.
 TO BROAD ST.

SCALE 50 FEET PER INCH.

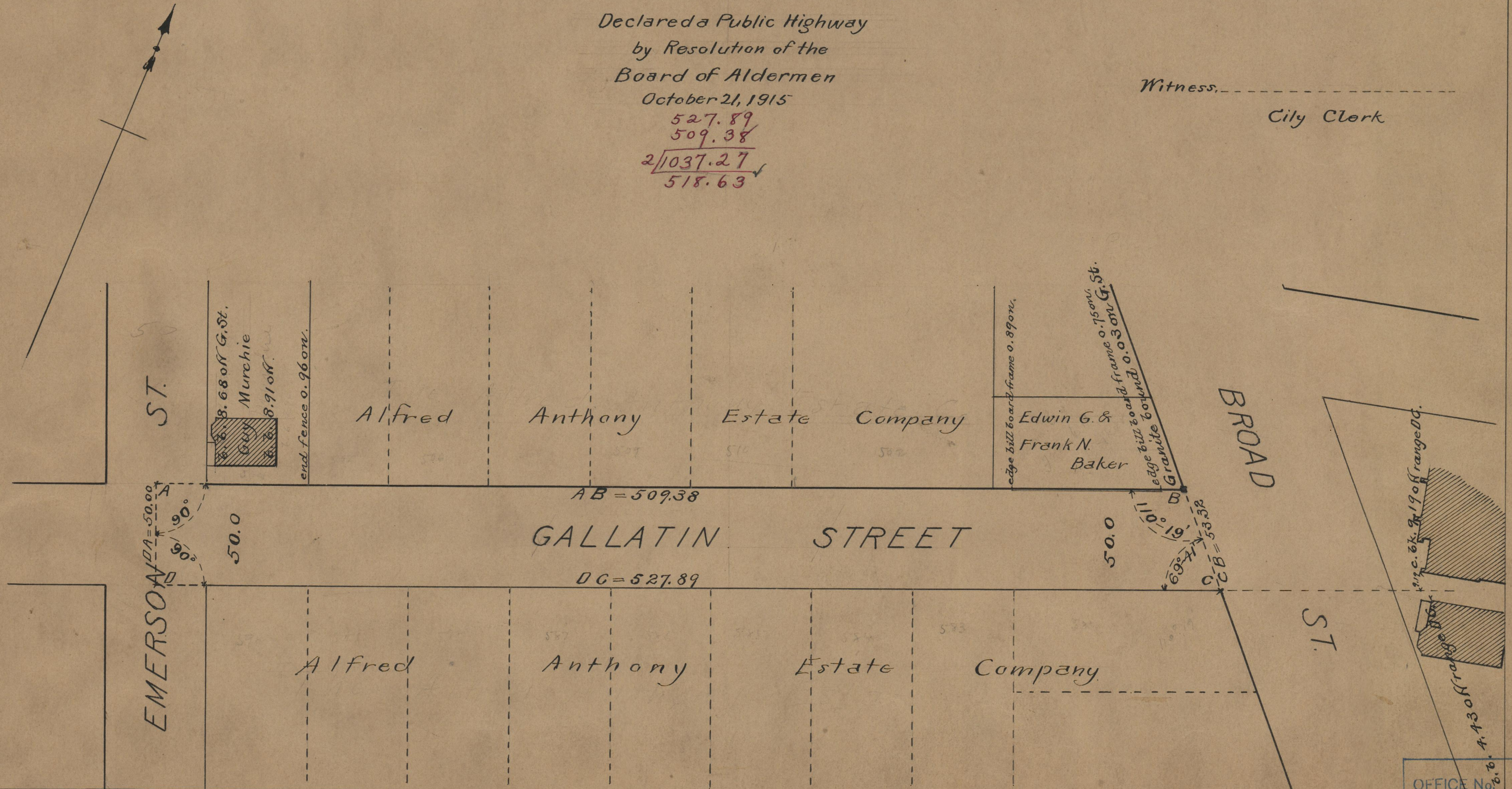
Declared a Public Highway
 by Resolution of the
 Board of Aldermen
 October 21, 1915

527.89
 509.38
 2/1037.27
 518.63 ✓

Witness, _____
 City Clerk

Note, The area declared a public highway
 is indicated by the letters ABCD.

The lines thus fixed conform to the deeds
 recorded in Deed book 497, page 370, and
 Deed book 503, page 275, in the office of
 the Recorder of Deeds.



OFFICE No. 19613
 DRAWER " 74
 SHEET " A-63