

PROVIDENCE, R.I.  
CITY ENGINEER'S OFFICE  
STREET LINE DEPT.  
Oct. 15, 1915  
041267-

PLAT OF

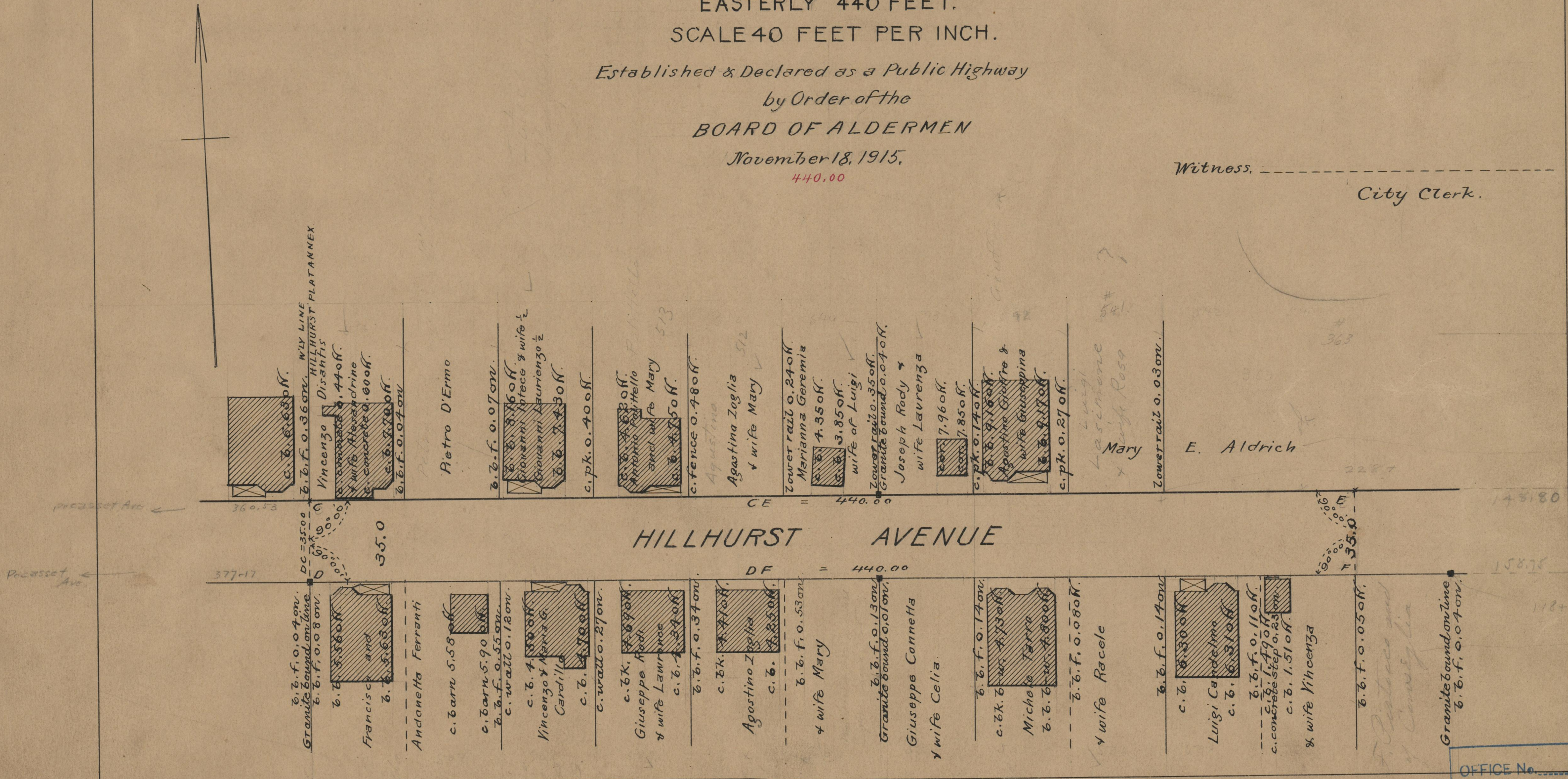
HILLHURST AVENUE

FROM WESTERLY LINE HILLHURST PLAT ANNEX  
EASTERLY 440 FEET.  
SCALE 40 FEET PER INCH.

Established & Declared as a Public Highway  
by Order of the  
BOARD OF ALDERMEN  
November 18, 1915.  
440.00

Note, The area established as a public highway is indicated by the letters CDEF.

Witness, \_\_\_\_\_  
City Clerk.



OFFICE No. 19612  
DRAWER " 74  
SHEET " A-62