

PROVIDENCE, R.I.
CITY ENGINEER'S OFFICE
STREET LINE DEPT.

Oct 15, 1915

041265-

PLAT OF PIEDMONT STREET

FROM ATWELLS AVE. TO GESLER ST.

SCALE 40 FEET PER INCH.

Established & Declared a Public Highway

by Order of the
BOARD OF ALDERMEN

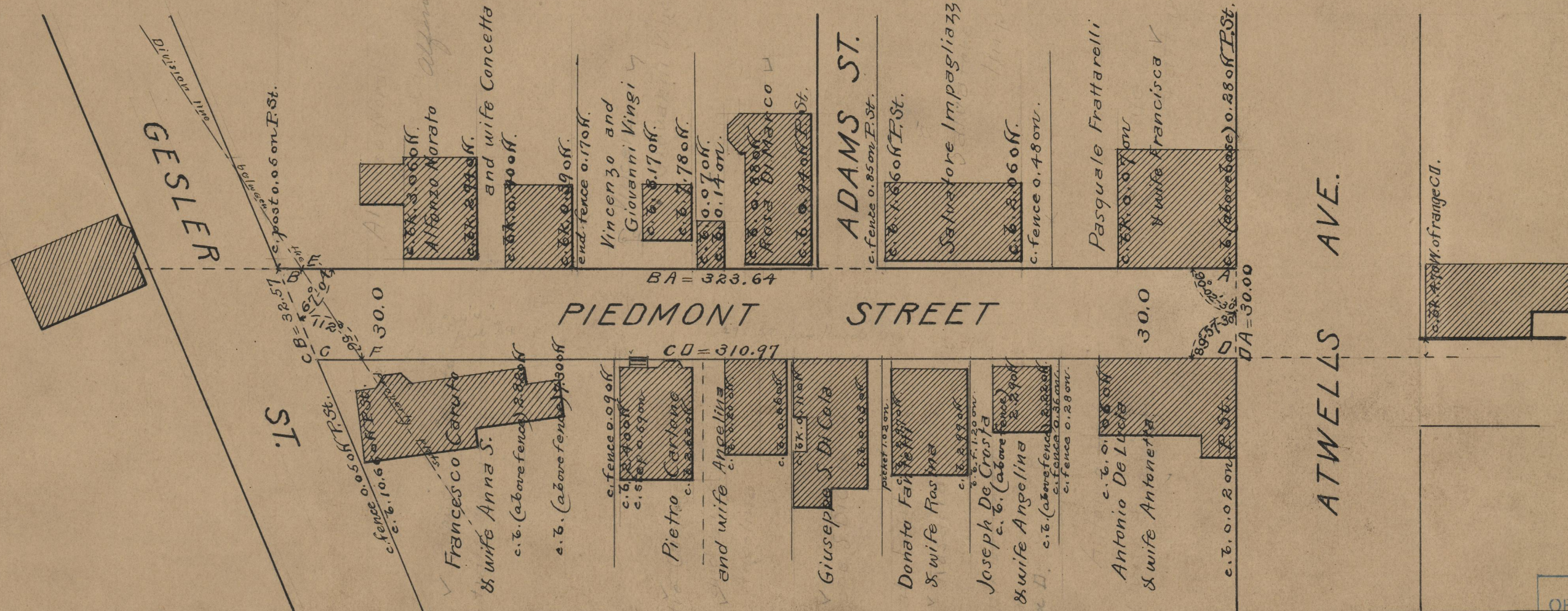
November 18, 1915.

Note, The area established as a public highway is indicated by the letters AEFD
The area declared a public highway is indicated by the letters BCFE.
See Deed book 548 page 236.

323.64
310.97
2/634.61
317.30

Witness

City Clerk



OFFICE No.	19611
DRAWER	74
SHEET	A-61

49-47

04280 - Pl...
04281 - N.W.
SAMPLE