

PROVIDENCE, R.I.  
CITY ENGINEER'S OFFICE  
STREET LINE DEPT.

August 20, 1915

041163

# PLAT OF YORKSHIRE STREET FROM HAWKINS ST. TO LONGMONT ST.

IN TWO SHEETS

SCALE 50 FEET PER INCH.

Declared a Public Highway

by Resolution of the  
Board of Aldermen,

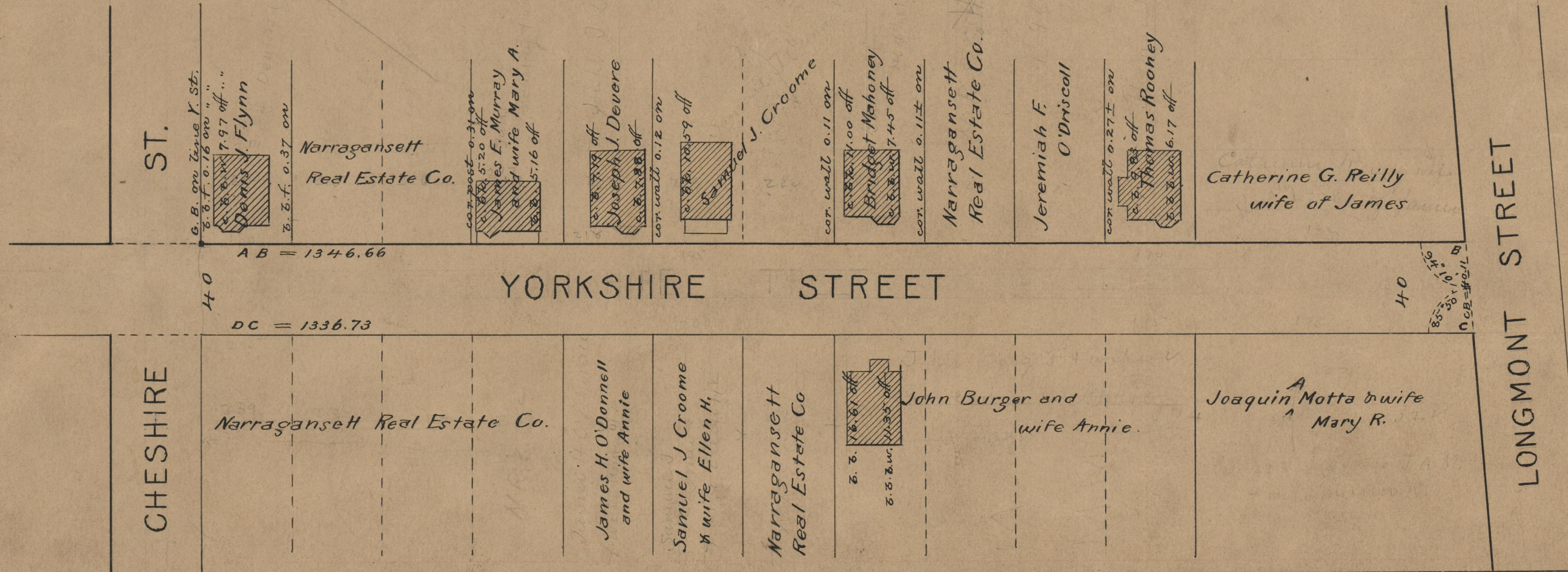
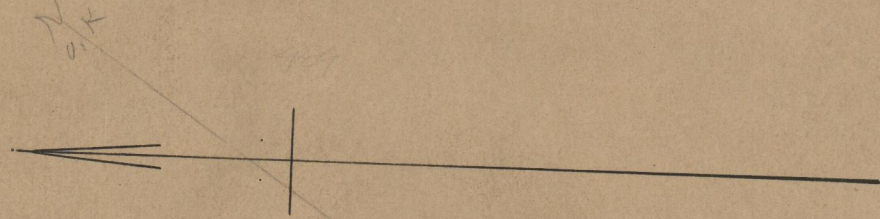
August 12, 1915.

Witness, \_\_\_\_\_

City Clerk

Note: The area declared a public highway  
is indicated by the letters ABCD.

The lines thus fixed conform to the deeds  
recorded in Deed book 407, page 227, Deed  
book 439, page 409, Deed book 444, page 430,  
and Deed book 446, pages 5, 11, 23 and 24,  
in the office of the Recorder of Deeds.



OFFICE No. 19553  
DRAWER " 74  
SHEET " A-57

74  
A57