

407-227 439-51-4909

PROVIDENCE, R.I.  
CITY ENGINEER'S OFFICE  
STREET LINE DEPT.

August 20, 1915

041162

# PLAT OF LONGMONT STREET

FROM WESTERLY LINE OF YORKSHIRE ST.

TO CORNWALL ST.

SCALE 50 FEET PER INCH.

*Declared a Public Highway  
by Resolution of the  
Board of Aldermen*

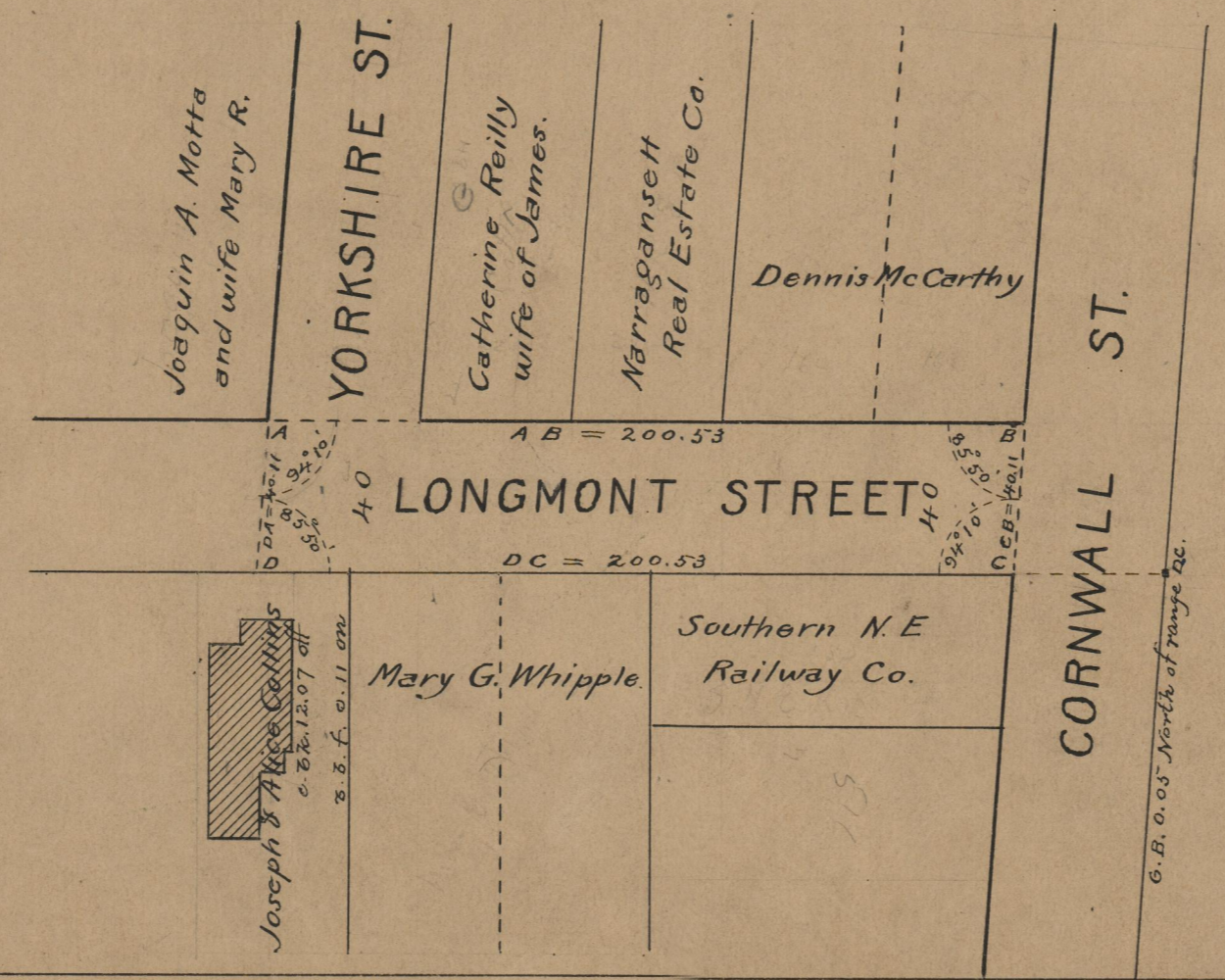
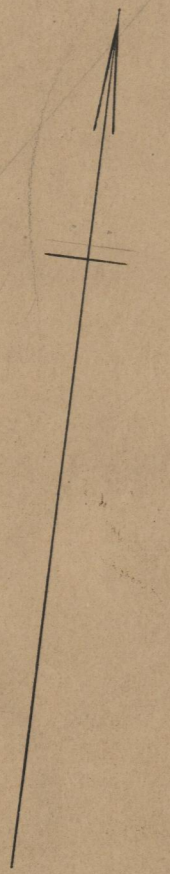
*August 12, 1915.*

200.53

Witness, -----

City Clerk

Note, The area declared a public highway  
is indicated by the letters A B C D.  
The lines thus fixed conform to the deed  
recorded in Deed book 407, page 227, in the  
office of the Recorder of Deeds



74  
A-56

OFFICE No.	19552
DRAWER	74
SHEET	1 5