

PROVIDENCE, R.I.  
CITY ENGINEER'S OFFICE  
STREET LINE DEPT.  
July 31, 1915  
041097

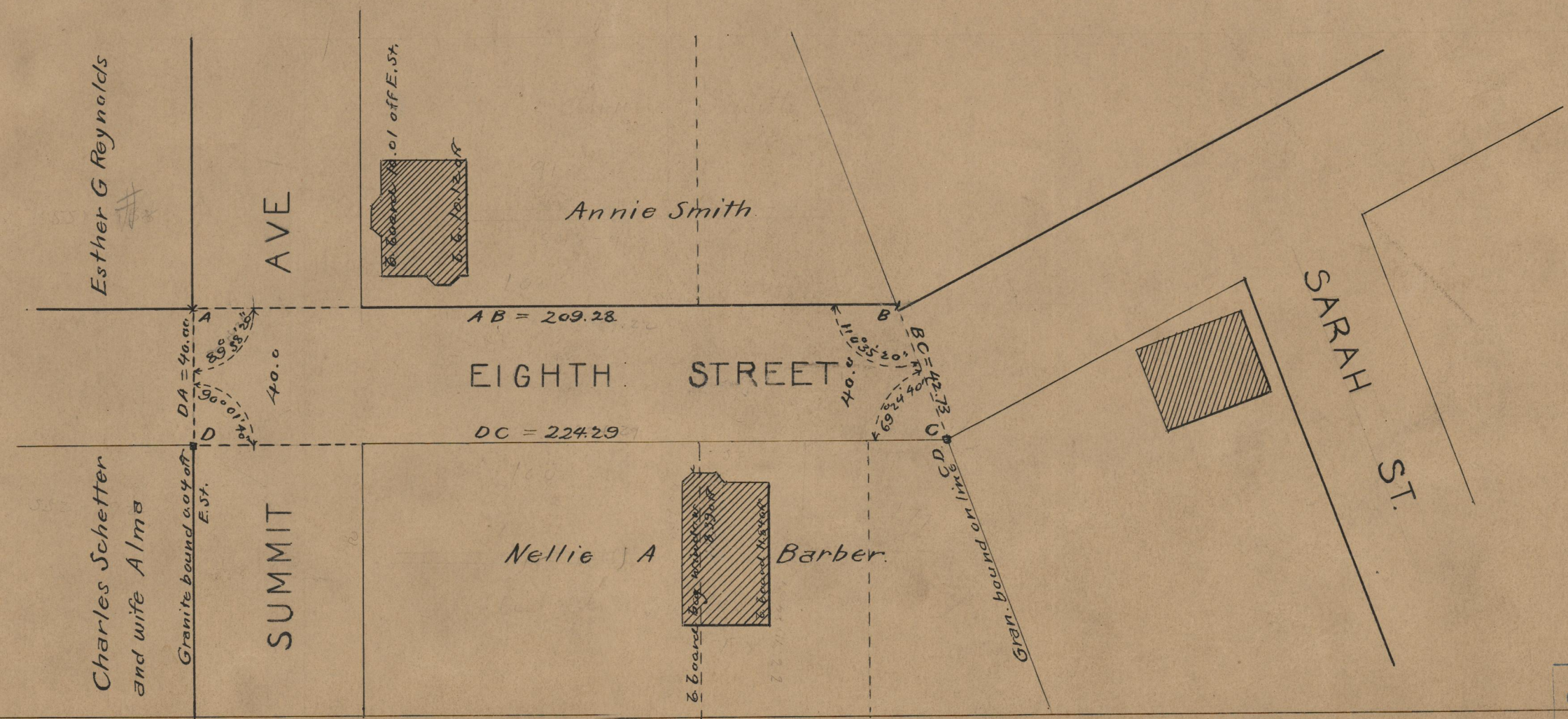
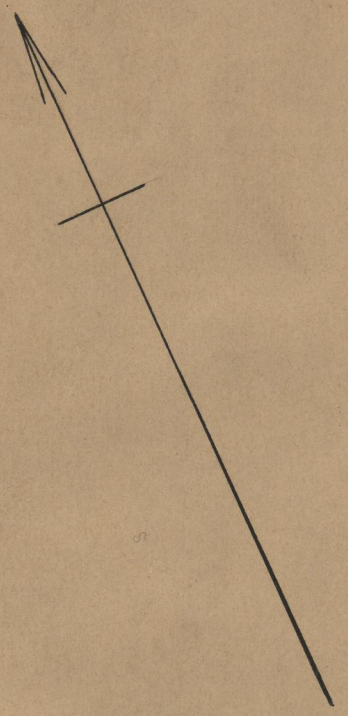
PLAT OF  
**EIGHTH STREET**  
FROM W'LY LINE OF SUMMIT AVE  
TO E'LY LINE OF RANDALL PLAT  
SCALE 40 FEET PER INCH  
DECLARED A PUBLIC HIGHWAY  
BY RESOLUTION OF THE  
BOARD OF ALDERMEN

Note, The area declared a public highway  
is indicated by the letters A B C D.

The lines thus fixed conform to the deeds  
in Deed book 548, pages 402 and 429, Deed  
book 551, page 138, and Deed book 552, page  
192, in the office of the Recorder of Deeds.

209.28  
224.29  
21733.57  
216.79

Witness, \_\_\_\_\_  
City Clerk.



OFFICE No. 19539  
DRAWER,, 74  
A-54