

041095-6

PROVIDENCE, R.I.
CITY ENGINEER'S OFFICE
STREET LINE DEPT.
July 31, 1915
041095

PLAT OF TENTH STREET

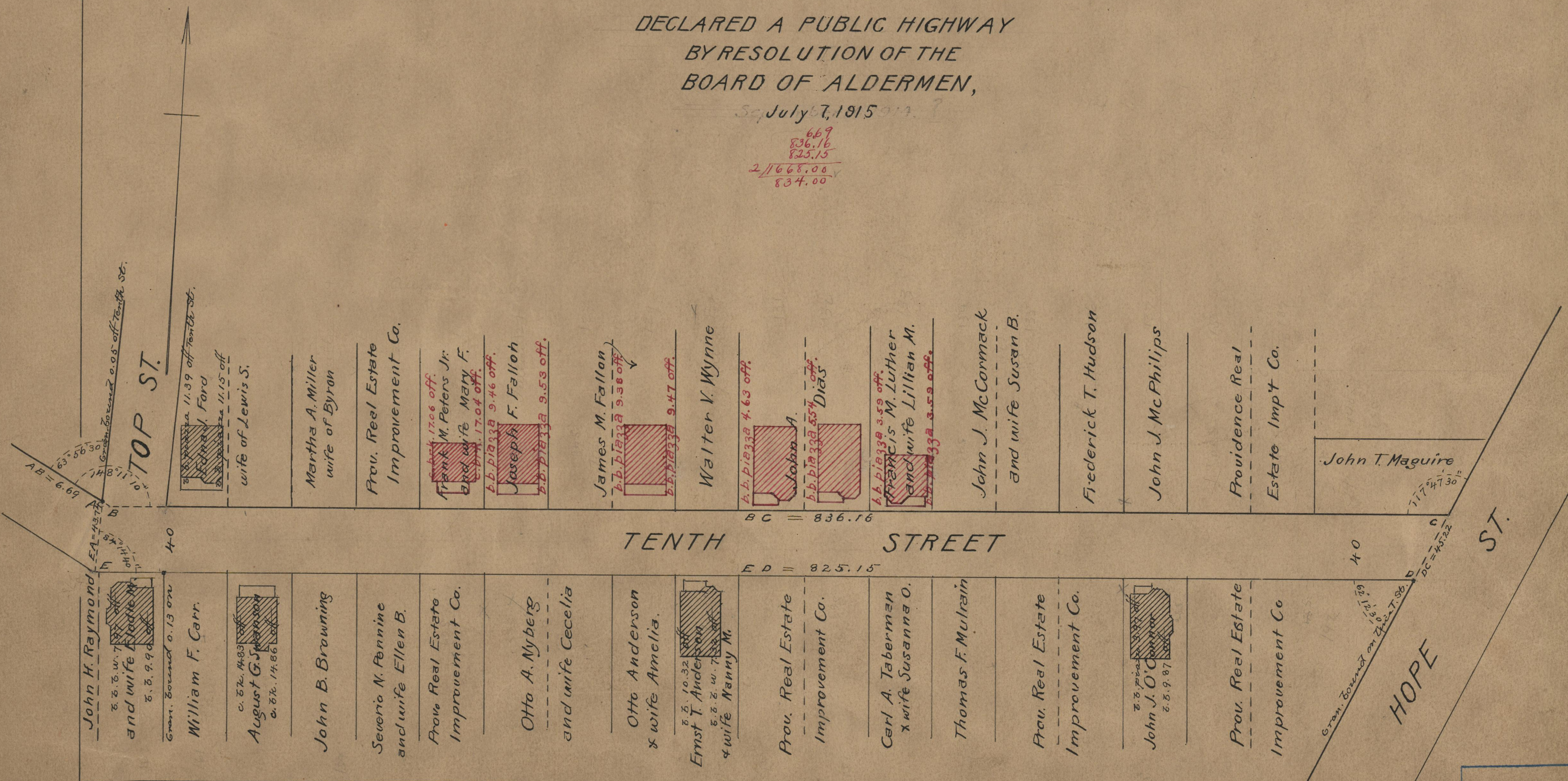
FROM WLY LINE OF TOP ST. TO HOPE ST.

SCALE 60 FEET PER INCH,
DECLARED A PUBLIC HIGHWAY
BY RESOLUTION OF THE
BOARD OF ALDERMEN,

July 7, 1915

Note, The area declared a public highway
is indicated by the letters ABCDE.
The lines thus fixed conform to the deed
recorded in Deed book 515, page 340 in the
office of the Recorder of Deeds.

669
836.16
825.15
21668.00
834.00



OFFICE No. 19538
DRAWER 74
SHEET A-53

74
A53