

PROVIDENCE, R.I.
CITY ENGINEER'S OFFICE
STREET LINE DEPT.
July 6, 1915

041034

PLAT OF SUMMIT AVENUE FROM ROCHAMBEAU AVE. TO FOURTH ST.

IN TWO SHEETS,
SCALE 50 FEET PER INCH,

Declared a Public Highway
by Resolution of the
Board of Aldermen
June 17, 1915.

Witness, _____
City Clerk

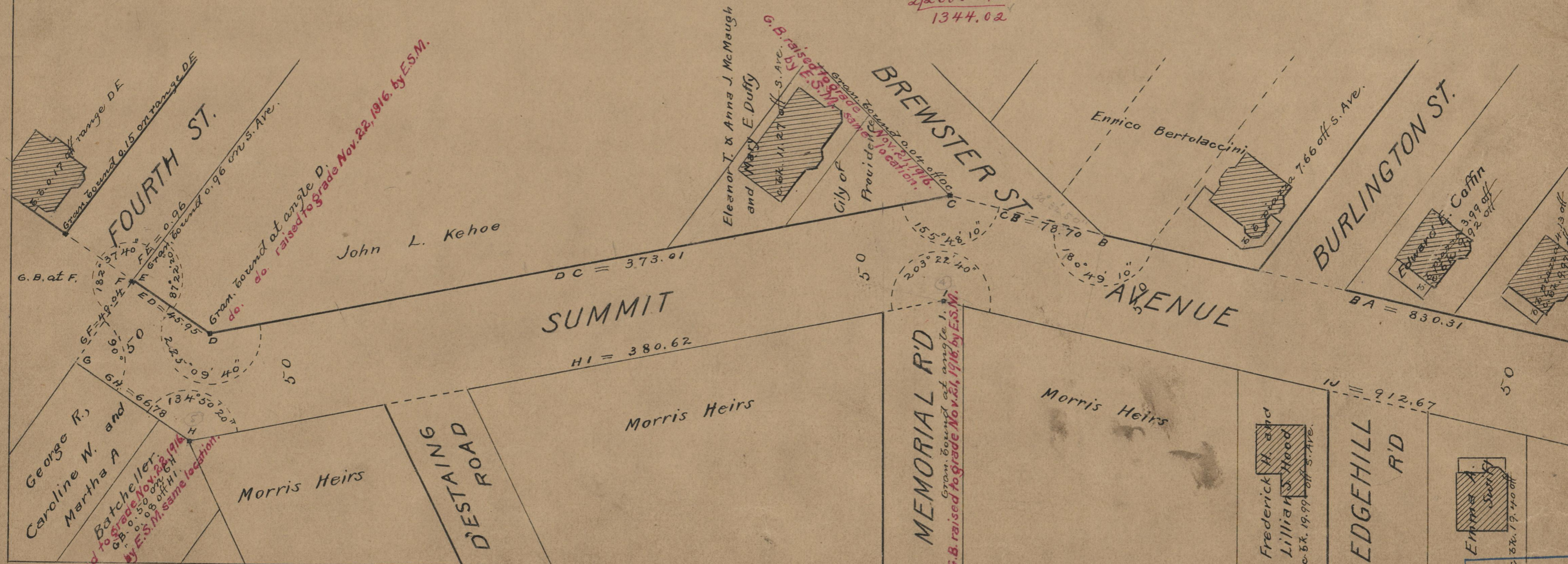
45.95
373.01
830.31
912.67
380.62
66.78
78.70

22688.04

1344.02

Note, The area declared a public highway is indicated by the letters ABCDEFGHIJ.

The lines thus fixed conform to the deeds in Deed book 520, page 51, Deed book 521, pages 287, 296, 299, 306, 442 and 443, Deed book 523, pages 124, 212, 362 and 364, Deed book 525, page 98, Deed book 526, page 8, Deed book 528, page 201, Deed book 548, page 455, Deed book 551, pages 118 and 154, and Deed book 552, page 161, in the office of the Recorder of Deeds.



74
A 52

OFFICE No. 19518
DRAWER 74