

PROVIDENCE, R.I.
CITY ENGINEER'S OFFICE
STREET LINE DEPT.

July 6, 1915

041033

PLAT OF SUMMIT AVENUE

FROM ROCHAMBEAU AVE. TO FOURTH ST.

IN TWO SHEETS

SCALE 50 FEET PER INCH,

Declared a Public Highway
by Resolution of the
Board of Aldermen,

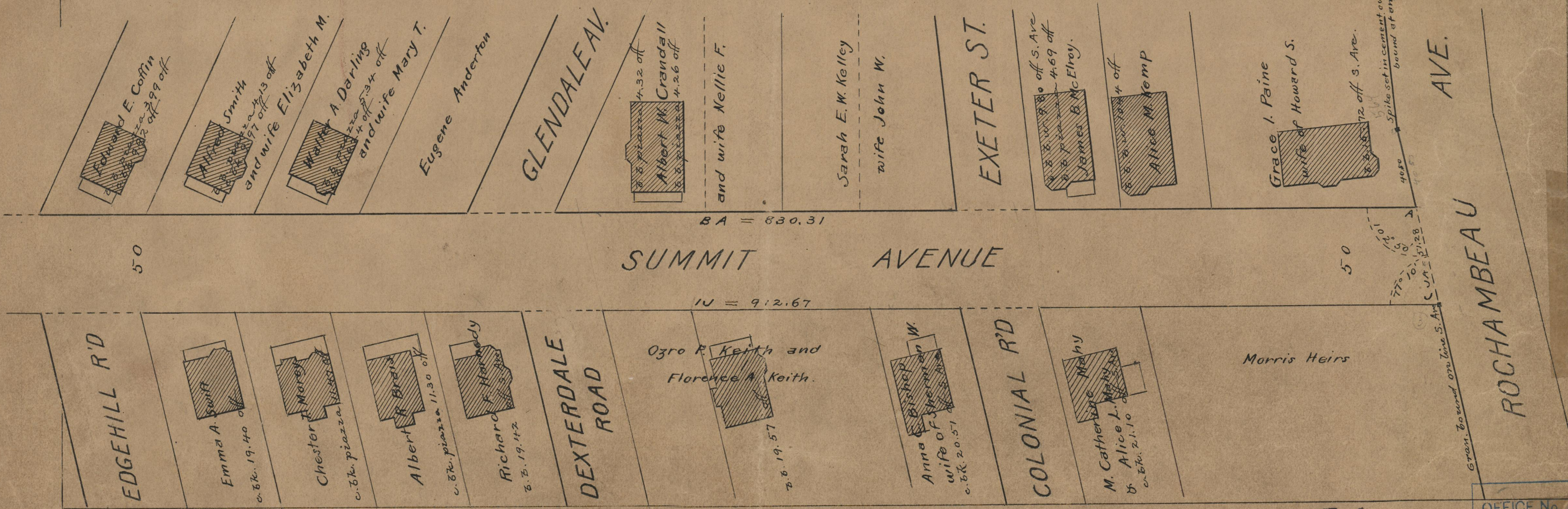
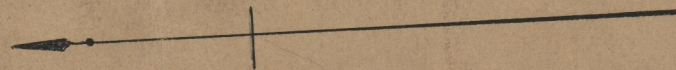
June 17, 1915.

Witness, _____

City Clerk

Note, The area declared a public highway
is indicated by the letters ABCDEFGHIJ.

The lines thus fixed conform to the deeds
in Deed book 520, page 57, Deed book 521,
pages 287, 296, 299, 306, 442 and 443, Deed
book 523, pages 124, 212, 362 and 364, Deed
book 525, page 98, Deed book 526 page 8,
Deed book 528, page 201, Deed book 548,
page 455, Deed book 551, pages 118 and
154, and Deed book 552, page 161, in the
office of the Recorder of Deeds.



74
A51

OFFICE No. 195
DRAWER
SHEET