

Note, The area declared a public highway is indicated by the letters A B C D.
 The lines thus fixed conform to the deeds recorded in Deed Book 391, page 49, Deed Book 392, page 119, and Deed Book 547, page 390, in the Office of the Recorder of Deeds.

PLAT OF HILTON STREET

FROM PUBLIC ST. TO BOGMAN ST.

SCALE 40 FEET PER INCH.

DECLARED A PUBLIC HIGHWAY

BY RESOLUTION OF THE

BOARD OF ALDERMEN

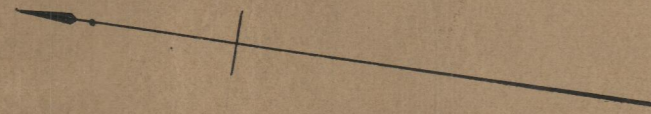
April 15, 1915

200.60

PROVIDENCE, R.I.
 CITY ENGINEER'S OFFICE
 STREET LINE DEPT.

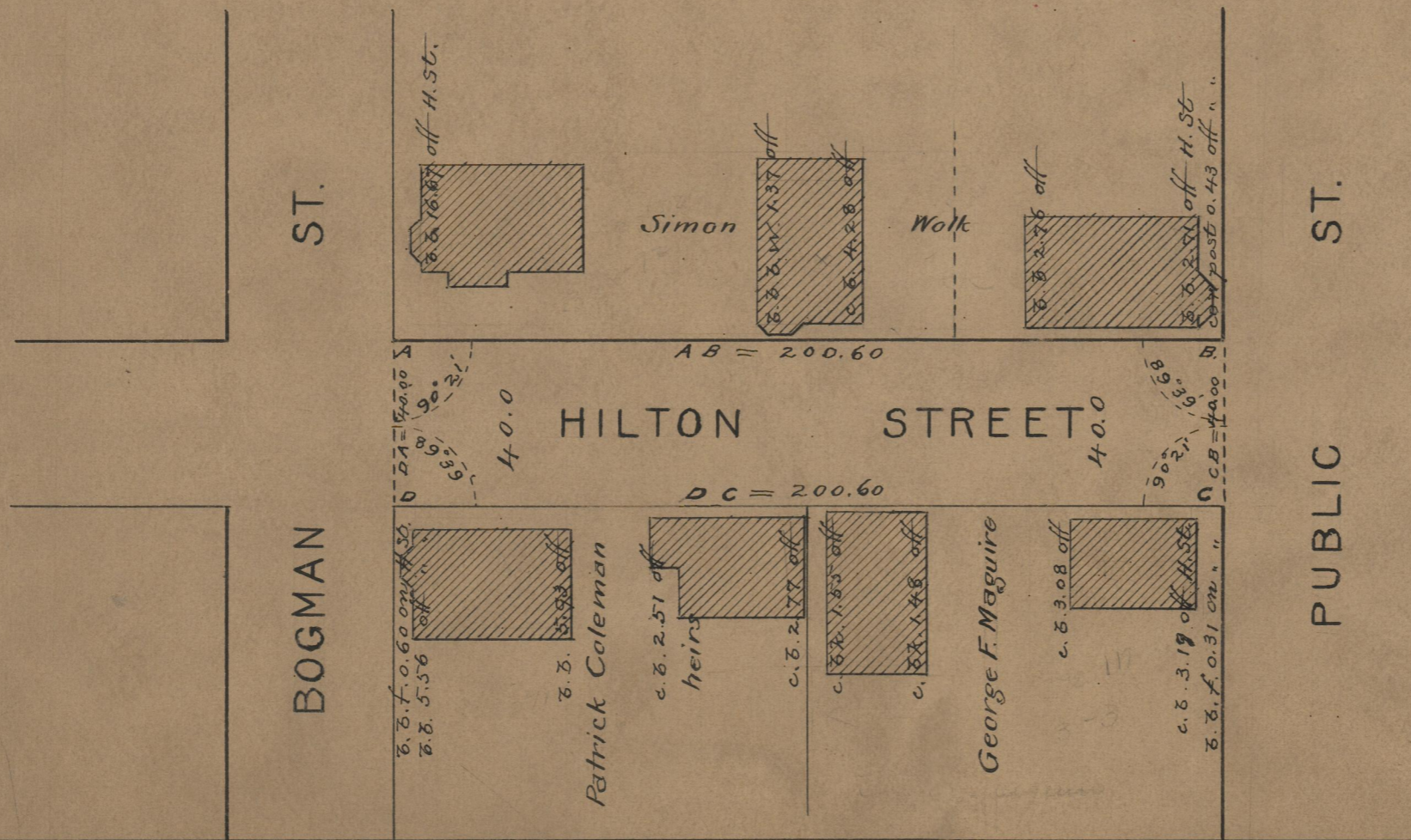
Apr. 27, 1915

040871



Witness.....

City Clerk



388-72
 391-44
 392-119
 547-390

OFFICE No. 19474
 DRAWER " 74
 SHEET " A-44