

PROVIDENCE, R.I.  
 CITY ENGINEER'S OFFICE  
 STREET LINE DEPT.  
 Dec. 5, 1914

040555-6

PLAT OF

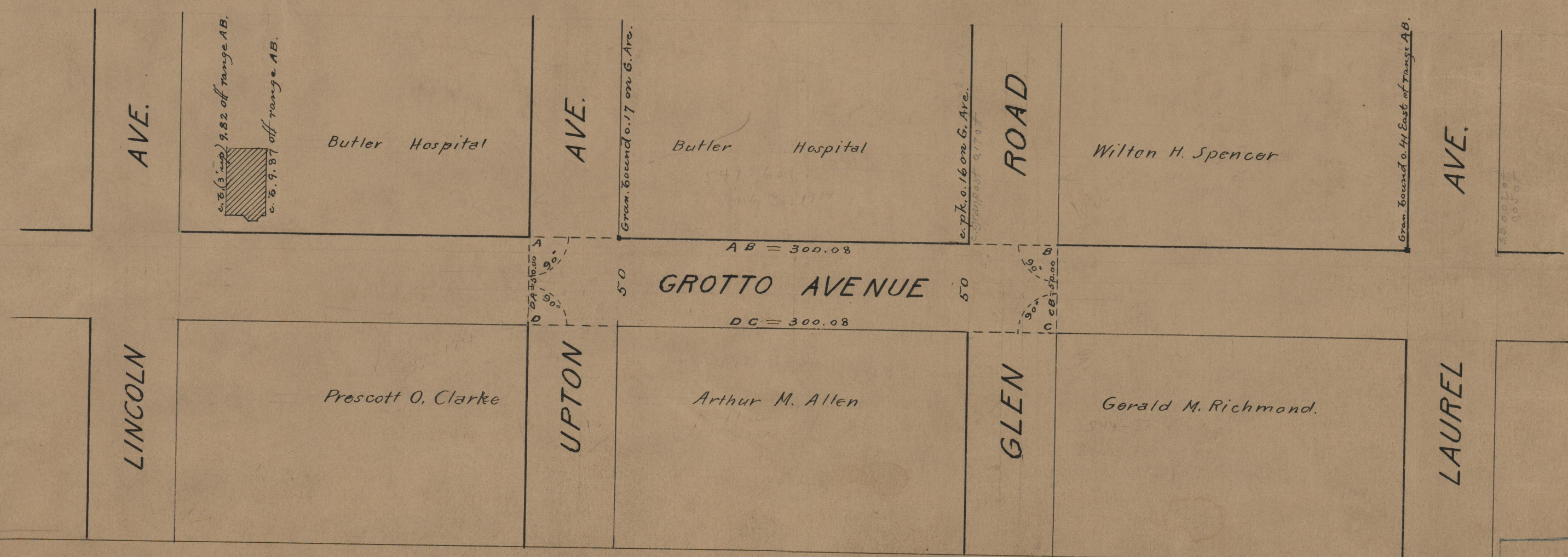
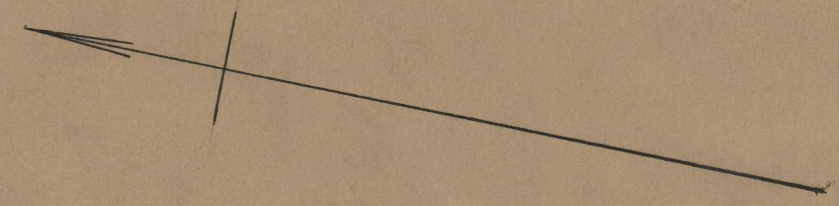
# GROTTO AVENUE

FROM THE N'LY LINE OF UPTON AVE.  
 TO THE S'LY LINE OF GLEN ROAD  
 SCALE 60 FEET PER INCH.

Declared a Public Highway  
 by resolution of the  
 Board of Aldermen  
 November 19, 1914.  
 300.08

Witness, \_\_\_\_\_  
 City Clerk

Note, The area declared a public highway  
 is indicated by the letters ABCD.  
 The lines thus fixed conform to the  
 deeds recorded in Deed Book 540,  
 page 347, Deed Book 544, page 56, Deed  
 Book 547, pages 60, 173 and 175, in the  
 office of the Recorder of Deeds.



74  
 A-40

OFFICE No. 19392  
 DRAWER,, 74  
 SHEET,, A-40