

Freeman Parkway.

PROVIDENCE, R.I.  
CITY ENGINEER'S OFFICE  
STREET LINE DEPT.

Dec. 5, 1914

646553

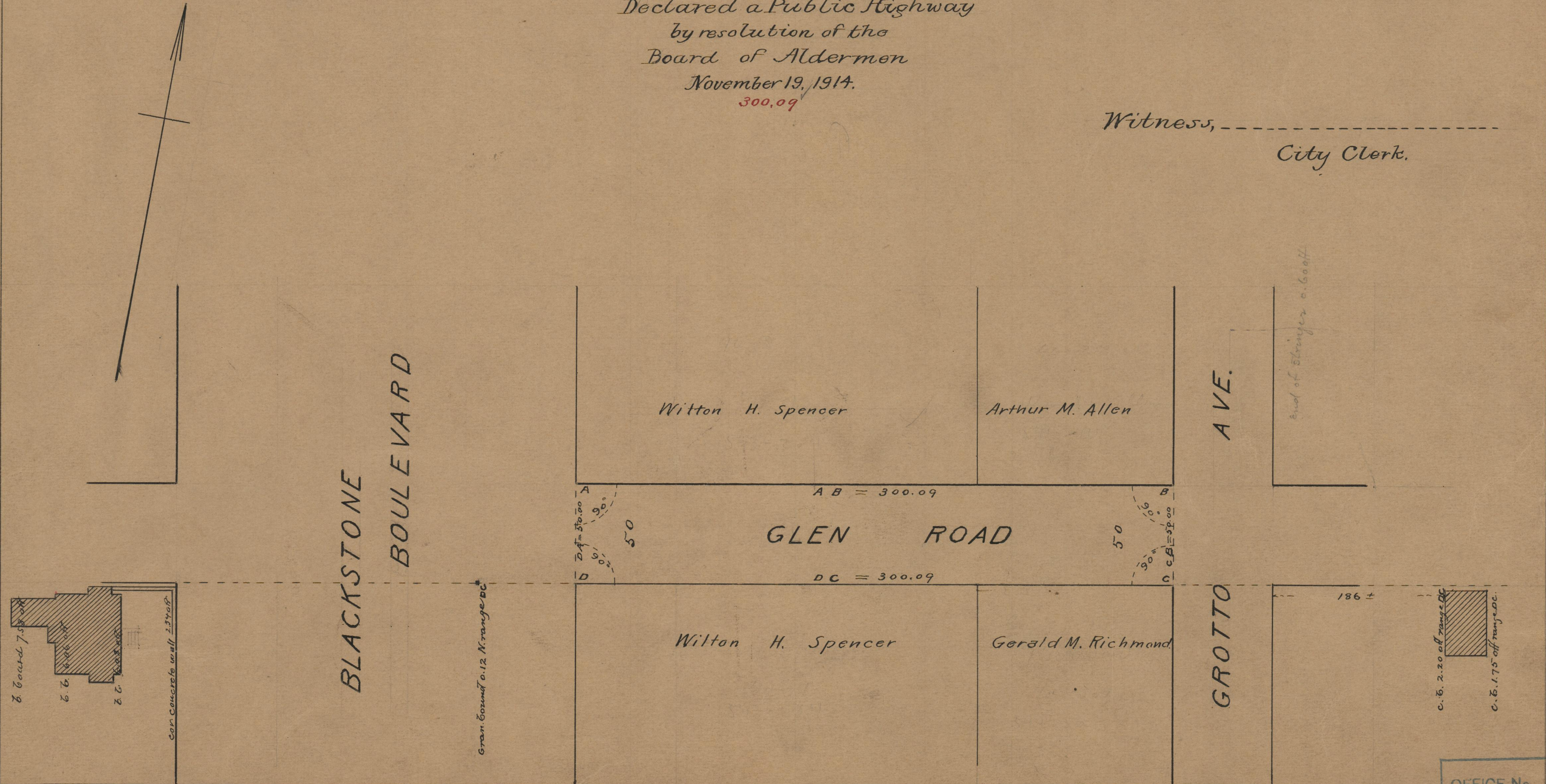
PLAT OF  
**GLEN ROAD**  
FROM BLACKSTONE BOULEVARD TO GROTTO AVE.  
SCALE 50 FEET PER INCH.

Note, The area declared a public highway is indicated by the letters ABCD.

The lines thus fixed conform to the deeds recorded in Deed Book 541, page 411, Deed Book 543, page 204, Deed Book 544, page 56, in the office of the Recorder of Deeds.

Declared a Public Highway  
by resolution of the  
Board of Aldermen  
November 19, 1914.  
300.09

Witness, -----  
City Clerk.



74  
A39

OFFICE No.	19391
DRAWER	74
SHEET	A-39